



**St Helena  
Government**

# PROPERTY DISPOSAL REGISTER

## DOCUMENT PROCESS

<b>Property Disposal Register</b>	Required by the Land & Buildings Disposal Policy 2016 and the Property Disposal and Purchase Policy 2024
<b>VERSION NUMBER</b>	<b>3</b>
<b>Approval</b>	Executive Council - 13 June 2023
<b>TARGET IMPLEMENTATION DATE</b>	13 June 2023
<b>Approval</b>	Updates to Register - Ministers Advisory Board for Economic Development – 13.02.2024
<b>Approval</b>	Updates to Register - Ministers Advisory Board for Economic Development – 18.04.2024

# CONTENTS

1. Introduction .....	4
2. Buildings .....	6
3. Land for Residential and Commercial Development.....	11
4. Comprehensive Development Areas (CDA) and Coastal Village Areas (CVA) .....	Error! Bookmark not defined.
5. Heritage Property .....	23



# 1. INTRODUCTION

## THE PROPERTY DISPOSAL REGISTER

The Property Disposal Register identifies all Crown land and buildings that have been declared surplus by the St Helena Government (SHG), in accordance with the Property Disposal and Purchase Policy 2024 (PDPP 2024).

Each year, the Crown estate is reviewed through a rationalisation process, assessing the current and future need for land and buildings, to ensure operational efficiency and effective asset management. This process allows SHG to:

- Identify buildings that are no longer required for operational purposes,
- Determine land that is no longer productive for the intended purpose,
- Identify land and buildings that may be used to support the Government's Vision, strategic objectives, and the goals of Sustainable Economic Development Strategy 2023–2033.

Once property is identified and declared surplus, it is added to the Property Disposal Register. The Register is published to provide transparency in SHG's asset management, and informs the public of the land and buildings that SHG intends to make available for disposal, ensuring an open and accountable process.

## LINKS TO THE PROPERTY DISPOSAL PLAN

The disposal of surplus property is planned over a five year period through the Property Disposal Plan, as outlined in the PDPP 2024.

The Plan provides more in-depth information on individual properties including timeframes for disposal, tenure, guide price, marketing and special conditions attached to sale. The Plan will also be publically available.



## IMPLEMENTATION

The Property Service, which forms part of SHG's Economic Development Portfolio is responsible for implementing the processes for identifying, and having property declared surplus, and for updating the Register, subject to the processes and authority for decision making under the PDPP 2024, with oversight by the Minister for Treasury and Economic Development.



## 2. BUILDINGS

Property ID	Description	Location	Area (ac)	Tenure Options	Condition
BG0118	Blue Hill Field Centre	Blue Hill	0.92	Leasehold	2
HTH0720	Signal House	Ladder Hill	0.22	Leasehold/Freehold	2
HTH0313	Ladder Hill Fort	Ladder Hill	1.7	Long Leasehold	2
HTH0320	Ladder Hill Complex	Ladder Hill	0.79	Long Leasehold	2
LWS0022	Longwood First School	Longwood	0.6	Leasehold/Freehold	2
LWN0091	Bertrand's Cottage	Longwood	0.59	Long Leasehold	2
LWN0240, LWN0241, LWN0242 & LWN0249	Longwood Dairy Complex (Part of)	Longwood	0.01, 0.014, 0.005, 0.029	Leasehold/Freehold	3
HTH0329	Red Roof	Half Tree Hollow	0.56	Long Leasehold	2
HTH0069	Sundale	Half Tree Hollow	1.478	Leasehold/Freehold	3

HTH0328	Former Police Club	Ladder Hill	0.20	Leasehold/Freehold	2
DPRR0046	Former Sandy Bay Clinic	Sandy Bay	0.13	Leasehold/Freehold	3
JT020045	Retail Unit – Customs & Passenger Terminal Building	Jamestown	8.84m <sup>2</sup>	Leasehold	2
JT020045	Kiosk - Customs & Passenger Terminal Building	Jamestown	7.7m <sup>2</sup>	Leasehold	1
JT020018	Sand Yard	Jamestown	0.06	Leasehold	3
JT020035 & JT020036	Kiosk and Dining Area – Leisure Park	Jamestown	0.04/0.06	Leasehold	1
JT010007/002 2/0023/0024	St. Helena Dive Club	The Wharf, Jamestown	0.003, 0.009, 0.002, 0.001	Leasehold	1
JT010010	Workshops	The Wharf, Jamestown	0.021	Leasehold	2
JT010012	Workshops	The Wharf, Jamestown	0.021	Leasehold	2
JT010017	Fishmongers	The Wharf, Jamestown	0.033	Leasehold	2
JT010021	St. Helena Yacht Club	The Wharf, Jamestown	106.5m <sup>2</sup> / 0.03	Leasehold	2
JT010025	Boat Shed	The Wharf, Jamestown	0.016	Leasehold	1

JT010026	Boat Shed	The Wharf, Jamestown	0.019	Leasehold	1
JT020006	Mule Yard	Jamestown	0.32	Leasehold	1
HTH0284 (part of)	The Gym	Half Tree Hollow	101.17m <sup>2</sup> / 0.02	Leasehold	1
FP0068	Scott's Mill	Francis Plain Gut	0.32	Leasehold	2
HTH0685	Colonnade	Ladder Hill	0.03	Leasehold	2
HTH0686	Colonnade	Ladder Hill	0.02	Leasehold	2
HTH0659	Colonnade	Ladder Hill	0.03	Leasehold	2
HTH0658	Colonnade	Ladder Hill	0.03	Leasehold	2
HTH0651	Colonnade	Ladder Hill	0.03	Leasehold	2
HTH0672	Colonnade	Ladder Hill	0.05	Leasehold	2
HTH0671	Colonnade	Ladder Hill	0.05	Leasehold	2
HTH0319	Colonnade	Ladder Hill	0.03	Leasehold	2



JT020032	Leisure Park	Jamestown	0.03	Leasehold	1
JT020034	Leisure Park	Jamestown	0.05	Leasehold	1
LWN0280	Near Longwood Enterprise Park	Longwood Dairy	0.02	Leasehold	2
LWN0285	Near Longwood Enterprise Park	Longwood Dairy	0.02	Leasehold	2
LWS0660	Bradleys, Longwood	Longwood	0.92	Leasehold	2
HTH1053	Business Units, Ladder Hill Business Units	Ladder Hill	1.135	Leasehold	2
JT080017	Business Units, The Market	Jamestown	0.106	Leasehold	2
LWN0487	Business Units, Longwood Enterprise Park	Longwood	0.179	Leasehold	2
NG0352	Business Units, New Ground Business Units	New Ground	0.42	Leasehold	2

## CONDITION RATINGS EXPLAINED

Condition Rating	Condition <sup>1</sup>
1	Building observed to be in good repair. Ongoing routine and planned maintenance necessary
2	Some minor non-structural defects observed. No urgent attention required, however defects should be addressed to avoid worsening and further property decline.
3	Serious defects observed, including structural. Urgent investigation and repair is necessary.
NI	No inspection carried out

---

<sup>1</sup> Condition ratings are formed by the opinion of untrained assessments carried out in 2023, they are not the opinions of a qualified Building Surveyor. However these ratings build upon the qualified condition assessments carried out in 2014 and are given only as an indicative guide as to building condition. Crown Property is offered "as seen".

### 3. LAND FOR RESIDENTIAL AND COMMERCIAL DEVELOPMENT

Property ID	Location	Area (ac)	Tenure Options
AF0388	Alarm Forest	0.68	Leasehold/Freehold
BG0244	Blue Hill	4.26	Leasehold/Freehold
To be demarcated	Near The Saddle, Horse Pasture	TBC	Leasehold/Freehold
HTH1223	Near former Rifle Range, Half Tree Hollow	0.156	Leasehold/Freehold
HTH1225	Near former Rifle Range, Half Tree Hollow	0.262	Leasehold/Freehold
HTH1402	Near former Rifle Range, Half Tree Hollow	0.342	Leasehold/Freehold
HTH1400	Near former Rifle Range, Half Tree Hollow	0.210	Leasehold/Freehold
HTH1451	Former Nursery, Half Tree Hollow	0.69	Leasehold/Freehold

JT150002	Upper Jamestown	0.13	Leasehold/Freehold
LWN0505	Bottom Woods	0.133	Leasehold/Freehold
LWN0506	Bottom Woods	0.132	Leasehold/Freehold
LWN0507	Bottom Woods	0.136	Leasehold/Freehold
LWN0508	Bottom Woods	0.1317	Leasehold/Freehold
LWN0509	Bottom Woods	0.143	Leasehold/Freehold
LWN0511	Bottom Woods	0.143	Leasehold/Freehold
LWN0512	Bottom Woods	0.132	Leasehold/Freehold
LWN0513	Bottom Woods	0.132	Leasehold/Freehold
LWN0514	Bottom Woods	0.149	Leasehold/Freehold
LWN0538	Bottom Woods	0.17	Leasehold/Freehold

LWN0551	Colt Sheds	2.957	Leasehold/Freehold
LWS0575	Plane View, Bottom Woods	11.032	Leasehold/Freehold
LWS0665	Near Bradleys, Longwood	0.65	Leasehold/Freehold
NG0516	New Ground	0.235	Leasehold/Freehold
NG0517	New Ground	0.29	Leasehold/Freehold
NG0518	New Ground	0.295	Leasehold/Freehold
PB0028	Near Bradleys, Longwood	0.77	Leasehold/Freehold
TH010143	Burnt Rock	0.276	Leasehold/Freehold
AF0416	Alarm Forest	9.249	Leasehold/Freehold
AF0624	Alarm Forest	273.71	Leasehold/Freehold
DW0202	Deadwood	1265.336	Leasehold/Freehold

LWS0530	Longwood	5.215	Leasehold/Freehold
SBE0225	Sandy Bay	191.242	Leasehold/Freehold
SCOT0245	Scotland	1	Leasehold/Freehold
SCOT0325	Scotland	4.25	Leasehold/Freehold
SCOT0654	Scotland	17.14	Leasehold/Freehold
SH0514	Levelwood	79.08	Leasehold/Freehold
SCOT0676	Near Young's Valley	0.74	Leasehold/Freehold
SCOT0677	Near Young's Valley	0.53	Leasehold/Freehold
SCOT0678	St Pauls	4.576	Leasehold/Freehold
TH010147	St Pauls	198.32	Leasehold/Freehold
TW0078	Thompson's Wood	45.892	Leasehold/Freehold

HTH1232	Clay Gut	0.335	Leasehold/Freehold
HTH1039	Half Way	0.225	Leasehold/Freehold
NG0475	Clay Gut	0.299	Leasehold/Freehold
HTH1230	Clay Gut	0.281	Leasehold/Freehold
LWS0425	Longwood	0.128	Leasehold/Freehold
NG0377	New Ground	0.258	Leasehold/Freehold
NG0528	Clay Gut	0.41	Leasehold/Freehold
NG0358	New Ground	0.48	Leasehold/Freehold
BG0030	Barren Ground	0.18	Leasehold/Freehold
HTH1270	Half Tree Hollow, former Rifle Range	0.863	Leasehold/Freehold
NG0523 (part of)	Clay Gut area	1.3	Leasehold/Freehold

HTH1478 (part of)	Half Tree Hollow	6	Leasehold/Freehold
TH010060 (part of)	Burnt Rock	5	Leasehold/Freehold
HTH1478 (part of)	Container Park, Half Tree Hollow	1.5	Leasehold/Freehold
HTH1478 (part of)	Adjacent to Solar Farm	2	Leasehold/Freehold
HTH1478 (part of)	HTH CDA	10	Leasehold/Freehold
LWN0521	Colt Sheds, Longwood	9.51	Leasehold/Freehold
HTH1226	Half Tree Hollow, near former Rifle Range	0.229	Leasehold/Freehold
RV0093 (part of)	Crown land surrounding private property	457.758	Leasehold/Freehold
RV0106 (part of)	Crown land surrounding private property	756.036	Leasehold/Freehold
LWS0567	Near Golf Course, Longwood	0.126	Leasehold/Freehold
LWS0566	Near Golf Course, Longwood	0.136	Leasehold/Freehold



LWS0280	Near Golf Course, Longwood	0.17	Leasehold/Freehold
SH0470	Levelwood	0.22	Leasehold/Freehold
HTH0779	Cow Path, Half Tree Hollow	0.13	Leasehold/Freehold
SH0549	Levelwood	0.254	Leasehold/Freehold
HTH1466	Upper Cow Path, Half Tree Hollow	0.08	Leasehold/Freehold
LWS0102	Near Longwood Hangings, Longwood	0.36	Leasehold/Freehold
HTH1458	Near Red Hill, Half Tree Hollow	0.15	Leasehold/Freehold
DW0201	Deadwood	0.314	Leasehold/Freehold
JT020042	Within Moat, Jamestown	0.116	Leasehold/Freehold
HTH0222	Near White Wall, Half Tree Hollow	3.358	Leasehold/Freehold
AF0122	Alarm Forest	1.8	Leasehold

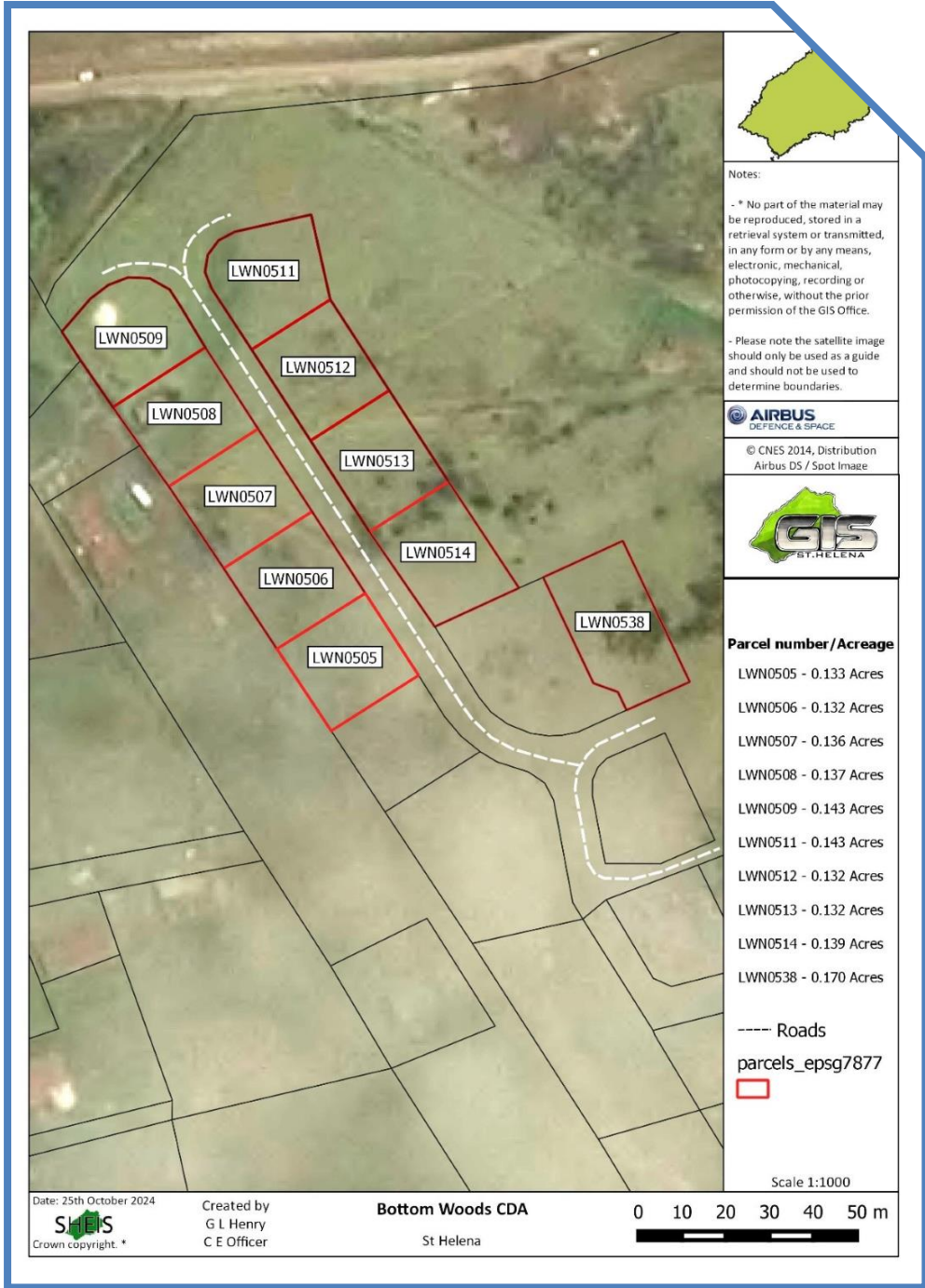
AF0478 (part of)	Alarm Forest	30.398	Leasehold/Freehold
AF0620 (part of)	Alarm Forest	64.61	Leasehold/Freehold
FP0503	Below Cut Wall, Near White Gate	0.97	Leasehold/Freehold
TH020073	Thompsons Hill	0.60	Leasehold/Freehold
TH010078	Horse Pasture, Blue Hill	0.21	Leasehold/Freehold
BG0126 (part of)	Burnt Rock, Blue Hill.	159	Leasehold/Freehold
BA0012	Near Hooper's Ridge, Blue Hill	0.49	Leasehold/Freehold
BA0014	Near Hooper's Ridge, Blue Hill	0.95	Leasehold/Freehold
BA0015	Near Hooper's Ridge, Blue Hill	1.7	Leasehold/Freehold
BA0025	Near Hooper's Ridge, Blue Hill	0.63	Leasehold/Freehold
BA0027	Horse Ridge, Blue Hill	0.47	Leasehold/Freehold

BA0028	Horse Ridge, Blue Hill	0.20	Leasehold/Freehold
BA0029	Horse Ridge, Blue Hill	0.29	Leasehold/Freehold
SH0114	Near Kennedys, Levelwood	0.67	Leasehold/Freehold
SH0396	Near Lazy Point, Levelwood	5.59	Leasehold/Freehold
SH0404	Near Kennedys, Levelwood	0.18	Leasehold/Freehold
SH0405	Near Kennedys, Levelwood	0.31	Leasehold/Freehold
SH0432	Bellstone, Levelwood	0.277	Leasehold/Freehold
SH0528	Bellstone, Levelwood	0.56	Leasehold/Freehold
SH0529	Bellstone, Levelwood	0.46	Leasehold/Freehold
TH020233	Near Bluemans Field, Thompsons Hill	0.658	Leasehold/Freehold
TH020236	Near Bluemans Field, Thompsons Hill	0.565	Leasehold/Freehold

TH020237	Near Bluemans Field, Thompsons Hill	2.437	Leasehold/Freehold
HTH1231	Clay Gut, Half Tree Hollow	0.342	Leasehold/Freehold
HTH1284	Clay Gut, Half Tree Hollow	0.231	Leasehold/Freehold
TH010019	Horse Pasture, Blue Hill	0.21	Leasehold
TH010048	Horse Pasture, Blue Hill	0.24	Leasehold
TH010070	Horse Pasture, Blue Hill	0.78	Leasehold
TH010113	Horse Pasture, Blue Hill	0.38	Leasehold/Freehold
SH0546	Near Lazy Point, Levelwood	0.335	Leasehold/Freehold

#### 4. COMPREHENSIVE DEVELOPMENT AREAS (CDA) & COASTAL VILLAGE AREAS (CVA)

Property ID	Property Description	Location	Area (ac)	Tenure Options
TH010107	Burnt Rock CDA	Burnt Rock, Blue Hill	16.8	Leasehold/Freehold
LWN0505, LWN0506, LWN0507, LWN0508, LWN0509, LWN0511, LWN0512, LWN0513, LWN0514, LWN0538 & LWN0541	Bottom Woods CDA (west)	Longwood	Various Areas	Leasehold/Freehold
LWS0029	Bottom Woods CDA (east)	Longwood	9.48	Leasehold/Freehold
SCOT0682	St. Pauls CDA	St Pauls	1.603	Leasehold/Freehold
Part of SBW0132, part of SBE0142 & SBE0070	Sandy Bay Beach - Coastal Village Area	Sandy Bay	To be demarcated	Leasehold
Part of TW033	Thompsons Bay - Coastal Village Area	Thompsons Valley	To be demarcated	Leasehold
Part of PB0031	Prosperous Bay Beach - Coastal Village Area	Prosperous Bay	To be demarcated	Leasehold



Notes:

- \* No part of the material may be reproduced, stored in a retrieval system or transmitted, in any form or by any means, electronic, mechanical, photocopying, recording or otherwise, without the prior permission of the GIS Office.

- Please note the satellite image should only be used as a guide and should not be used to determine boundaries.



© CNES 2014, Distribution Airbus DS / Spot Image



## 5. HERITAGE PROPERTY

Property ID	Property Description	Location	Area (ac)	Tenure
HTH0513	High Knoll Fort	Half Tree Hollow	TBC	Leasehold
TBC	Jacobs Ladder	Ladder Hill	TBC	Leasehold
TBC	Lemon Valley	Lemon Valley	TBC	Leasehold

