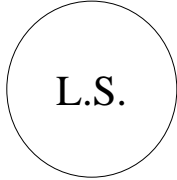


ASCENSION



NATIONAL PROTECTED AREAS ORDINANCE, 2003

NATIONAL PROTECTED AREAS (AMENDMENT) ORDER, 2025

In exercise of the powers conferred by section 3(b) of the National Protected Areas Ordinance, 2003, the Governor makes the following Order.

Citation and commencement

1. (1) This Order may be cited as the National Protected Areas (Amendment) Order, 2025.
- (2) This Order will come into force on 1 March 2025.

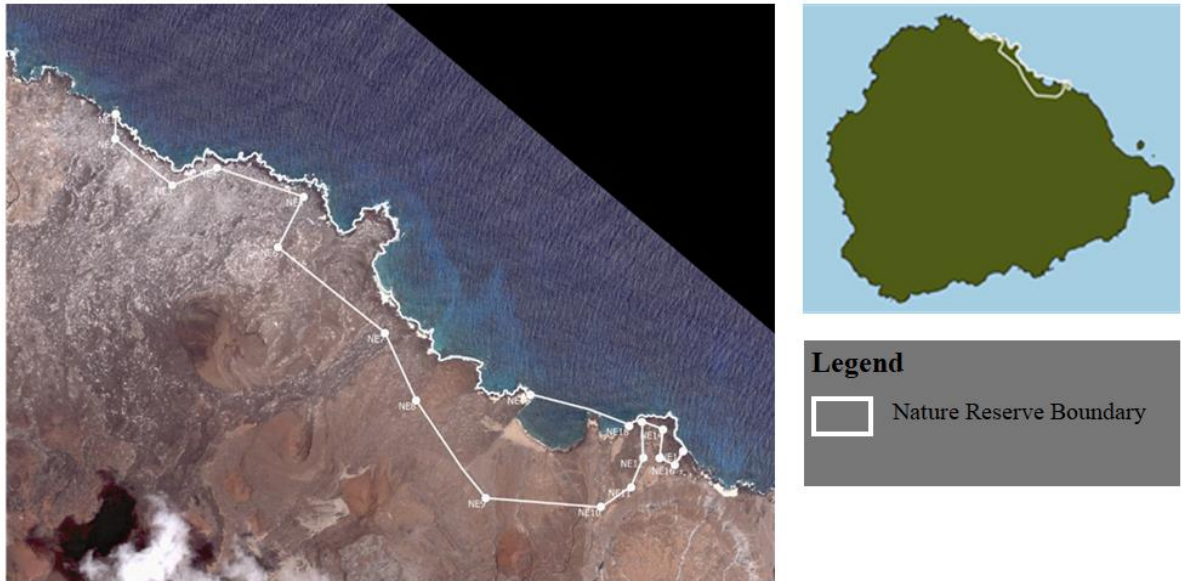
Amendment of Schedule

2. (1) The National Protected Areas Order, 2014 is amended as follows.
- (2) In Part II of the Schedule (Nature Reserves)—
 - (a) for paragraph 4, substitute:

“4. North East Coast Nature Reserve:

An area bounded by straight lines between reference points NE1 (N 9127430 E 569563) and NE2 (N 9127254 E 569559), reference points NE2 and NE3 (N 9126924 E 569966), reference points NE3 and NE4 (N 9127049 E 570282), reference points NE4 and NE5 (N 9126842 E 570899), reference points NE5 and NE6 (N 9126485 E 570716), reference points NE6 and NE7 (N 9125875 E 571477), reference points NE7 and NE8 (N 9125397 E 571698), reference points NE8 and NE9 (N 9124704 E 572193), reference points NE9 and NE10 (N 9124642 E 573012), reference points NE10 and NE11 (N 9124780 E 573227), reference points NE11 and NE12 (N 9124990 E 573314), reference points NE12 and NE13 (N 9125244 E 573304), reference points NE13 and NE14 (N 9125190 E 573453), reference points NE14 and NE15 (N 9124987 E 573428), reference points NE15 and NE16 (N 9124938 E 573537), reference points NE16 and NE17 (N 9125037 E 573597), the coastline between NE17 and NE18 (N 9125215 E 573212), a straight line between NE18 and NE19 (N 9125437 E 572510) and the coastline between NE19 and NE1.

Site Map NR3



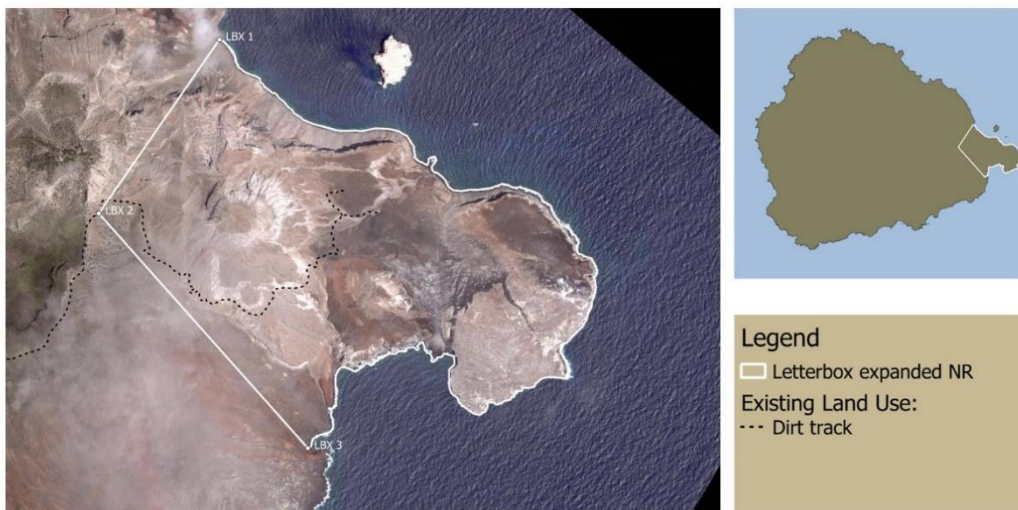
”;

(b) for paragraph 5, substitute:

“5. Letterbox Peninsula Nature Reserve

An area bounded by a straight line between Spire Beach LBX1 (N 9122886 E 575202) and the position of the gate at the top of the Marty-Wade Track, LBX2 (N 9121730 E 574400), a straight line between the position of the gate on the Marty-Wade Track and Crater Cliff, LBX3 (N 9120170 E 575790), and the coastline between Crater Cliff to Spire Beach.

Site Map NR4



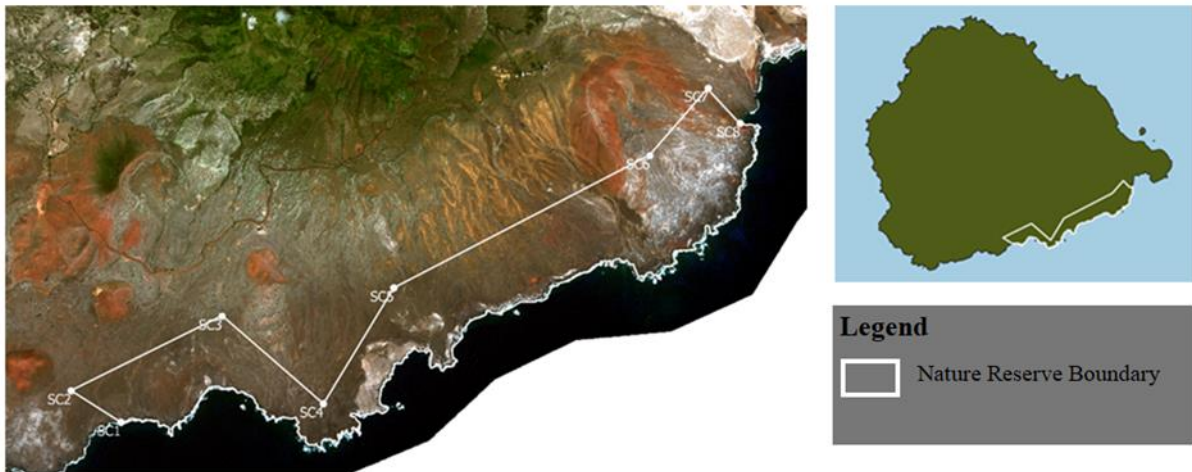
”;

(c) after paragraph 7, insert:

“7A. South Coast Nature Reserve:

An area bounded by straight lines between reference points SC1 (N 9117606 E 570474) and SC2 (N 9117876 E 570047), reference points SC2 and SC3 (N 9118516 E 571343), reference points SC3 and SC4 (N 9117764 E 572212), reference points SC4 and SC5 (N 9118759 E 572817), reference points SC5 and SC6 (N 9119894 E 575015), reference points SC6 and SC7 (N 9120473 E 575517), reference points SC7 and SC8 (N 9120170 E 575790) and the coastline between SC8 and SC1.

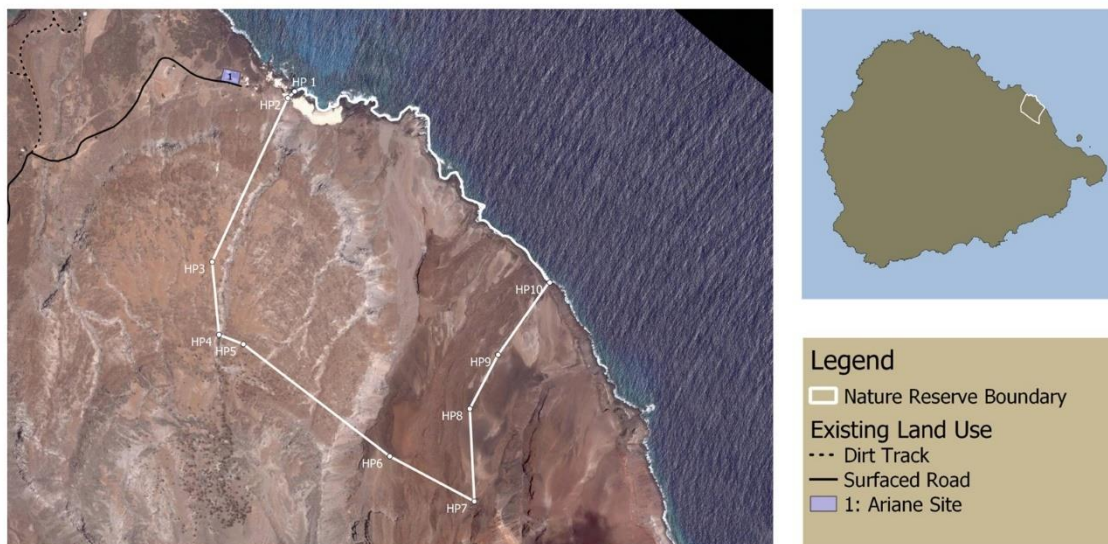
Site Map NR7



7B. Hummock Point Nature Reserve

An area bounded by a straight line on the west by a straight line between reference point HP1 (N 9124831 E 573815) and reference point HP2 (N 9124808 E 573791) and thence by a straight line to reference point HP3 (N 9124237 E 573527); on the south by a straight line between reference point HP3 and reference point HP4 (N 9123983 E 573551) and thence by a straight line to reference point HP5 (N 9123950 E 573636); on the east by straight lines between reference points HP5 and HP6 (N 9123559 E 574147), HP6 and HP7 (N 9123402 E 574442), HP7 and HP8 (N 9123725 E 574426), HP8 and HP9 (N 9123913 E 574525), and HP9 and HP10 (N 9124165 E 574705) and the coastline between HP10 and HP1.

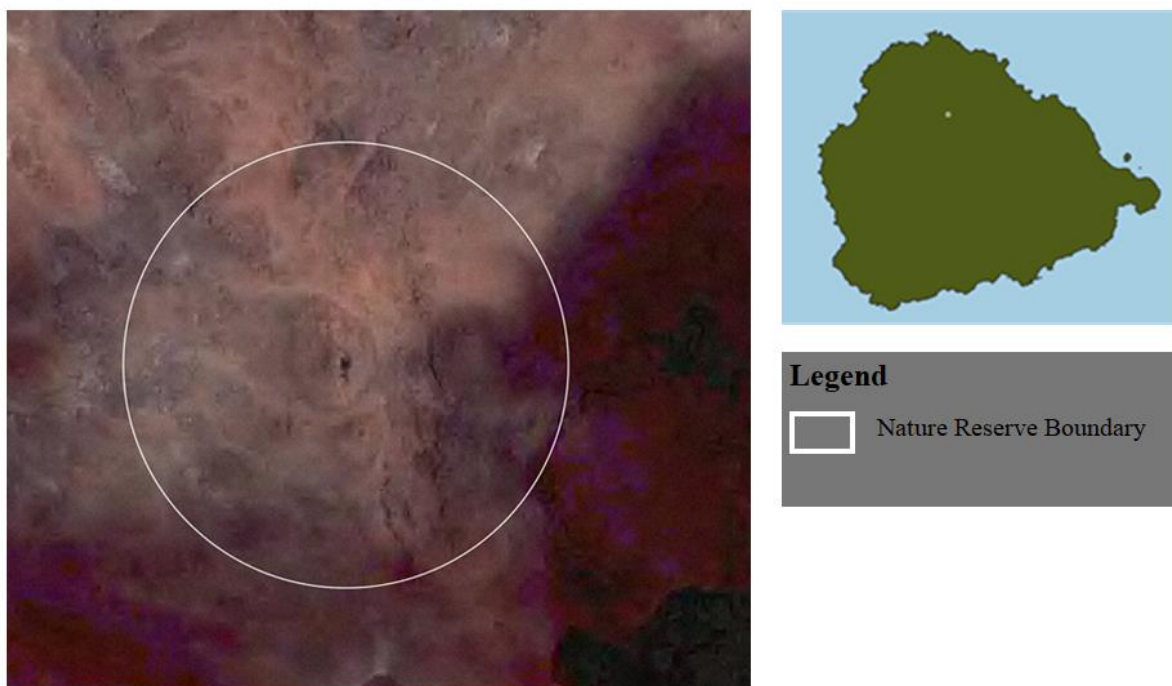
Site Map NR8



7C. Bat Cave Nature Reserve

A circular area 75m in radius centred around N 9124475 E 569082.

Site Map NR 9



Made this 19th day of February 2025.

Nigel Phillips CBE
Governor

EXPLANATORY NOTE

This Order amends Part II of the Schedule to the National Protected Areas Order, 2014 (“the Order”), to amend the boundaries of the North East Bay Nature Reserve and change its name to the North Coast Nature Reserve, amend the boundaries of the Letterbox Peninsula Nature Reserve, and creates the South Coast Nature Reserve, Hummock Point Nature Reserve, and the Bat Cave Nature Reserve. The areas designated as the South Coast Bay Nature Reserve and North Coast Nature Reserve are designated because they are the habitat of the endemic species of scaly crickets (*Discophallus ascension*, *Discophallus myrtleae*, and *Discophallus pallidus*). The extension of the Letterbox Peninsula Nature Reserve is to accommodate the expansion of the nesting sites of the endemic Ascension frigatebird (*Fregata aquila*). Hummock Point Nature Reserve is established as it is a growing site of the endemic species Ascension spurge (*Euphorbia origanoides*) and Ascension Island sedge (*Cyperus appendiculatus*). The Bat Cave Nature Reserve is established as it is the only known habitat of the Sheet-weaver spider (*Catonetria caeca*), and a habitat for Ashmole’s psocid (*Troglotroctes ashmoleorum*), and Springtail (*Pseudosinella lava*), all of which are endemic.