



---

# SHG ROADS MAINTENANCE POLICY

---

Approved on 14 October 2024 by the Minister for Safety, Security & Home Affairs

## DOCUMENT PROCESS

|   |                             |
|---|-----------------------------|
| STATE IF NEW POLICY OR AN UPDATE OF EXISTING POLICY (TITLE OF POLICY) | UPDATE OF ROADS POLICY 2021 |
| VERSION NUMBER  | 240619                      |
| NEXT STEPS – ACTION TO BE TAKEN AND BY WHOM                           |                             |
| TARGET IMPLEMENTATION DATE  |                             |

## VERSION MANAGEMENT

| LIST OF VERSIONS | POLICY MANAGER | REVIEW GROUP                  | DATE     |
|------------------|----------------|-------------------------------|----------|
| 240205           | Deon Robbertse | Working Group                 | 240205   |
| 240227           | Deon Robbertse |                               |          |
| 240319           | Deon Robbertse | Working Group                 |          |
| 240605           | Deon Robbertse | Working Group                 | 240605   |
| 240612           | Deon Robbertse | Working Group                 |          |
| 241007           | Deon Robbertse | Advisory Board Input          | 241007   |
| 241014           | Deon Robbertse | Minister for SS&HA - Approval | 14.10.07 |

### Working Group

Deon Robbertse, Head of Roads and Building Maintenance

Darren Francis, Roads Inspector

Derek Henry, Derek Henry, Head of Infrastructure SSHA & Strategies

Ann Muir – Strategic and Social Policy Coordinator

## Contents

|  |    |
|--|----|
| <b>1 INTRODUCTION</b> .....  | 4  |
| <b>1.1 Background</b> .....  | 4  |
| <b>1.2 Identification of the Problem, Challenge or Opportunity</b> .....                 | 4  |
| <b>1.3 Policy Rationale</b> .....  | 5  |
| <b>2 OVERARCHING POLICY FRAMEWORK</b> .....  | 5  |
| <b>2.1 Strategic Objectives</b> .....  | 5  |
| <b>2.2 Other as appropriate</b> .....  | 5  |
| <b>2.3 Policy Objectives and Principles</b> .....  | 6  |
| <b>2.4 Scope</b> .....   | 6  |
| <b>3. POLICY OUTLINE</b> .....   | 7  |
| <b>3.1 Responsibilities</b> .....  | 7  |
| <b>3.2 Classes of Highway – Government Roads</b> .....                                   | 7  |
| <b>3.3 Rating the Condition of Roads to Prioritise Works</b> .....                       | 7  |
| <b>3.4 District and Community Roads – Non-Government Roads (Not adopted Roads)</b> ..... | 8  |
| <b>3.5 Repair of Road Boundary Structures (Fences, Walls etc.)</b> .....                 | 8  |
| <b>3.6 Control of Overgrowth on Roads</b> .....  | 9  |
| <b>3.7 Highway Visibility Splays</b> .....   | 9  |
| <b>3.8 Storm Water Drainage</b> .....  | 9  |
| <b>3.9 Repair of Damage to Roads</b> .....   | 9  |
| <b>3.10 Car Parking</b> .....  | 10 |
| <b>3.11 Signs and Road Markings</b> .....  | 10 |
| <b>3.12 Safety Rails</b> .....   | 10 |
| <b>3.13 Street/ Security Lighting</b> .....  | 10 |

|   |    |
|---|----|
| 3.14 Bridges .....  | 10 |
| 3.15 Road Closures .....                                      | 10 |
| 3.16 Access for Emergency Vehicles during Road Closures. .... | 13 |
| 3.17 Delegated powers for road closure applications. ....     | 13 |
| ANNEX 1: LIST OF ROADS AND SECTION LENGTHS, 2024 .....        | 15 |
| ANNEX 2: MAP OF ROADS.....                                    | 22 |
| ANNEX 3: Road Visibility Splays .....                         | 23 |

# 1 Introduction

## 1.1 Background

This paper sets out the criteria for the allocation of maintenance funds throughout the 115.063 km (71.9 miles) of roads for which the Infrastructure Department of the Safety, Security and Home Affairs Portfolio (SSHA) is responsible. This paper gives the classification and hierarchy of the roads as well as the basis for the allocation of funds etc. The policy for roads is set by the SSHA Minister and the implementation of this policy is delivered by the Roads Section of the Safety, Security and Home Affairs Portfolio.

There are two categories of roads on St. Helena. These are:-

- Government
- Non-government

Each of these categories can be broken down further as in Table 1. See Annex 1 for detail of the different categories.

**Table 1: Categories of Roads**

|   |  |                 |       |        |
|---|--|-----------------|-------|--------|
| <b>Government<br/>(Adopted roads)</b>         | Highway  | Primary Roads   | 34144 | meters |
|   |  | Secondary Roads | 36581 | meters |
|   |  | Tertiary Roads  | 44338 | meters |
| <b>Non-Government<br/>(Not adopted roads)</b> | District   |                 |       |        |
|   | a) Private on Crown Land<br>b) Private on Private Land |                 |       |        |
|   | Community  |                 |       |        |

An accompanying document, the Road Maintenance Strategy provides detail on how the different classes of roads get inspected, how maintenance is delivered. It also gives specifications on construction methods for new primary, secondary and tertiary roads as well as for private / district and community roads. The criteria application forms for the community and district roads repair fund application is also in the Road Maintenance Strategy. The strategy works in conjunction with this policy

## 1.2 Identification of the Problem, Challenge or Opportunity

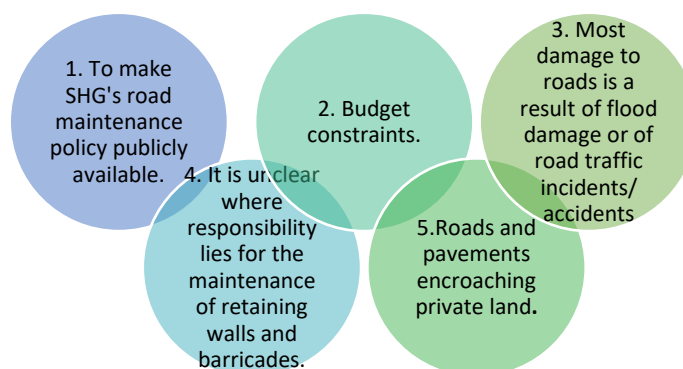


Figure 1 Key Issues Identified with the current situation

**Key Issue 1: To make SHG's road maintenance policy publicly available.**

The state of the roads is a topical and sensitive issue for Elected Members. For added transparency SHG wants to make readily available its guidelines for the prioritisation of maintenance work on adopted government owned roads on the SHG public website. Currently the policy and strategy sit in a single document and the Roads Section wants to separate out policy – the overall framework for strategy and undertaking road works – from strategy. See *the Roads Maintenance Strategy, 2024*. The strategy sets out how the policy will be implemented. From this strategy flows detailed plans for road works.

### **Key Issue 2: Budget constraints**

The Roads Section has a limited recurrent annual budget of £421,000 (2024/25) which means it can only focus on general and emergency/ reactive maintenance. Roads are inspected monthly for their general condition (See Roads Maintenance Strategy for more info), and a plan of work developed accordingly. There is no budget to plan maintenance in the long term or to work on privately owned roads on the Crown Estate or private land. The maintenance work is also limited to reactive repairs on existing infrastructure and only on adopted roads. Any new roads or infrastructure construction is not possible with the current budget limitations. Additional funding for roads would potentially enable major rehabilitation and improvements to the island’s roads network.

### **Key Issue 3: Most damage to roads is a result flood damage or of road traffic incidents/ accidents.**

If the person/s responsible for damage cannot be identified to meet the cost or for an insurance claim then the Roads Section has to meet the cost of repair. This cost of repairing damage can be expensive, for example when a vehicle hit Side Path wall in 2023 the cost of repair was £4 500. When Bishop’s Bridge was damaged the cost was £1 660. Stormy weather blew over trees in Thompson’s wood area and damage safety railings, repair costs was £3 500.

### **Key Issue 4: Maintenance of retaining walls and barricades is severely underfunded.**

The Roads Section is responsible for the maintenance and upkeep of the existing road side barriers and retaining walls. The restricted budget has monitoring implications for timely reactive maintenance.

## **1.3 Policy Rationale**

The reason for this policy – its intent – is to clarify SHG’s responsibilities for road maintenance, and the responsibility of private property owners for private roads on Crown land and private land.

# **2 OVERARCHING POLICY FRAMEWORK**

## **2.1 Strategic Objectives**

The purpose of the Roads Policy is to maintain the roads network in a safe and serviceable condition for the efficient movement of people, goods, and services, both now and in the future.



### **EFFECTIVE INFRASTRUCTURE**

We live in well-designed sustainable places where we are able to access the amenities and services we need.



### **ALTOGETHER SAFER**

We live our lives safe from crime, disorder and danger and our older and vulnerable residents are safe and supported with choices to live independently.

## **2.2 Other as appropriate**

Roads Ordinance, 1985. Highways Ordinance, 1881.

## 2.3 Policy Objectives and Principles

### Objectives

- a) Provide a safe road network.
- b) Permit access to main residential and commercial areas.
- c) Support economic development including tourism.
- d) Determine road categories and classifications.
- e) Comply with the Highway Code.

### Principles

- a) That a safe system approach is used. This is built on the premise that no one should be killed or seriously injured while using the road network due to poor road infrastructure i.e. lack of signage, barriers and poor maintenance resulting in collisions, damage to property or injury to persons and animals

*Safe System requires a systematic, multi-disciplinary and multi-sectorial approach which addresses the safety needs of all users; fatal and serious injury collision prevention, collision protection and mitigation and post-collision care and aligns with other policies for co-benefits such as health, occupational health and safety, sustainable development and poverty reduction. In a Safe System approach, mobility is a function of safety rather than vice versa. It involves the implementation of system-wide measures that ensure, in the event of a collision, that the impact forces remain below the threshold likely to produce either death or serious injury.<sup>1</sup>*

- b) That timely and adequate maintenance works saves money in the longer term. Scheduled planned maintenance allows for more efficient procurement and consequently lower costs. The more roads deteriorate the greater the maintenance costs and the costs to road users. However some literature points out *that if better maintenance increases vehicular speed, or leads to other 'compensatory' behaviour then any safety improvements will be limited by increased risks of death and serious injury in collisions.<sup>2</sup>*
- c) That roads management and maintenance must support the sustainable development of the island.

*The Government's vision for sustainable economic development is to enable our people to build their own futures and create their own opportunities, whilst leaving nobody behind. To do this, we will **create an enabling environment** that allows our people and businesses to thrive, **preserve what makes us and our Island unique**, and **improve how we deliver as a Government** to ensure that essential services to support our community and society can be sustainably delivered into the future.<sup>3</sup>*

## 2.4 Scope

This policy applies to all government adopted roads.

---

<sup>1</sup> <https://www.pacts.org.uk/safe-system/#:~:text=Safe%20System%20requires%20a%20systematic,such%20as%20health%2C%20occupational%20health>

<sup>2</sup> Nolan, 2003 quoted in

[https://www.its.leeds.ac.uk/projects/konsult/private/level2/instruments/instrument052/I2\\_052b.htm](https://www.its.leeds.ac.uk/projects/konsult/private/level2/instruments/instrument052/I2_052b.htm)

<sup>3</sup> SHG, 2023, *Sustainable Economic Development Strategy*, Jamestown, SHG

### 3. POLICY OUTLINE

#### 3.1 Responsibilities

**The SS&HA Roads Section** has a duty of care to maintain the safety and usability of roads that are kept and maintained at public expense. This includes the identification, assessment and prioritisation of risk and the management of risk. More specifically it is responsible for the delivery of the Roads Policy and Strategy and the prioritisation of works.

**The Head of Roads and Building Maintenance** is responsible for:

- a) Ensuring the condition of all adopted roads are recorded and monitored and quality control of any repairs.
- b) Identifying road hazards and deficiencies and implementing effective countermeasures. This is done with the input of other stakeholders, for example Police service
- c) Assessing technical needs for the maintenance required.
- d) Ensuring supervision of road maintenance for planned and reactive maintenance works, and for any associated works undertaken by the Roads Section.
- e) General site safety.
- f) Asset and people management.
- g) Project management and budgeting.

**The Roads Section** carries out maintenance including:

- a) Reactive maintenance
- b) Planned programme maintenance
- c) Road markings and signage (to comply with Road Traffic Regulations)
- d) Restoration following damage caused by adverse weather conditions or road traffic accidents.

#### 3.2 Classes of Highway – Government Roads

See the list of roads Annex 1 and the network map in Annex 2.

**Primary roads** serve the main centres of population, the main industrial/ commercial areas and a ring road connecting the main areas of the island. Shown in red in Annex 1 and Annex 2.

**Secondary roads** serve the various communities distributed around the island as well as areas of industry, commerce and agriculture. Shown in orange in Annex 1 and Annex 2.

**Tertiary roads** are all other surfaced roads maintained by SHG including roads provided as part of the serviced house plots. Shown in yellow in Annex 1 and Annex 2.

Annex 2 provides a detailed list of highways and their named stretches and lengths used to identify where maintenance is required. The highway network is also shown on the map in Annex 2. Private roads are indicated with a **green** line on the map, however there is not a complete list as their maintenance does not fall under the remit of the road section.

#### 3.3 Rating the Condition of Roads to Prioritise Works

The Roads Inspector will inspect all roads once a month and rate the condition of the road on a scale of 1 to 5, where 1 is in a good condition and 5 is in a bad condition. A primary road will carry more weight. The formula used by the Roads Section is that a secondary condition rating road remains the same and a primary road has 125% more urgency and a tertiary road has 75% less urgency.

Please refer to the Road Maintenance Strategy for details on how this will work in practice.



### 3.4 District and Community Roads – Non-Government Roads (Not adopted Roads)

**A District Road** is defined as one serving six or more occupied properties. The road may have previously received funds under the Community and District Road Programme. The aim is to improve these roads as funds become available. Application forms for district and community road repair funding are attached in the document “Road Maintenance Strategy”

**A Community Road** is a road that serves three to five occupied homes.

Funding specifically for building or the maintenance of these roads may be made available in the annual budget allocated to the Infrastructure Section only when a budget is appropriated for this purpose. Currently no funding has been made available for Community and District Roads. When funds become available the Roads Section will accept applications from a resident or a representative of residents whom the road will serve and these applications will be assessed by the Roads Section against a pre-set criteria.

Eligibility for Community Road funding will be based on the following:

- a) No of occupied houses served by the road
- b) Vulnerable people served by the road.
- c) Individuals with mobility issues, irrespective of age, must be certified by a Medical Officer.
- d) Condition of Road

In addition funding for Community Roads will also be based on:

- a) No of businesses served by the road.
- b) Social Infrastructure served by the road (e.g. shops)

All roads that travel through private property will require written confirmation of total and indefinite non-interference by the property owner to the road itself and an undertaking that no building or other construction will be made within 3 metres adjacent to either side of the road.

Once a District Road has been upgraded to a sealed surface it might become eligible for adoption by the government, as and when funds become available. After adoption, the maintenance of the road is undertaken by the Road Section. However, where the road is built on private property, the land remains private property.

Funding for Community and District Roads is available from an allocated fund. A maximum of up to £2,500 will be provided for raw materials and the hire of a roller only (unless otherwise approved by the highways authority or designated person). It is stipulated that residents will themselves be responsible for spreading the materials and fixing of the road. The Roads Section must verify the materials delivered/work done, as part of the SHG Auditing process.

### 3.5 Repair of Road Boundary Structures (Fences, Walls etc.)

The Road Section will endeavour to maintain boundaries of highways in such a state as to maintain the integrity of the highway and prevent damage to the adjoining road or any person using it.

Private landowners are legally responsible (*Highway Ordinance, CAP 102 (4) & (5)*) to maintain their boundaries in a state of repair as shall be necessary to prevent risk of injury to any person passing thereon, and prevent damage to the road and associated infrastructure. If these are not suitably maintained the SS&HA Advisory Board may give the occupier of the land seven days’ notice in writing to repair the boundary structure. If this is not carried out the SS&HA Minister may order the same to be done at the expense of the occupier.

### 3.6 Control of Overgrowth on Roads

The Road Section shall endeavour to control overgrowth from highways to prevent risk of injury to users of the Highway.

As above, under the Highway Ordinance, property owners are responsible for keeping trees and shrubs (including flax) from overhanging public roads and Highway. If these are not suitably maintained the SS&HA Advisory Board may give the occupier of the land seven days' notice in writing to lop, remove or cut down the overgrowth. If this is not carried out the SS&HA Advisory Board may order the work to be done at the expense of the occupier. These legal requirements of property owners should be disseminated by the SS&HA Minister.

### 3.7 Highway Visibility Splays

For the safety of users of the highway it is necessary to provide and maintain good visibility where one road meets another, or where an access meets the road. With the existing topography of the island this can be difficult, especially where old narrow accesses meet the main road.

As an early part of the planning process, the Roads Section is required to approve any new or modified accesses onto a public road or highway. The Roads Section will expect applications for new accesses to conform to the guidance note attached as Annex 4. If an applicant cannot meet these standards then the Road Section reserves the right to refuse the request for the new access. The applicant is responsible to mitigate any storm water at the new intersection.

The Roads Section reserves the right to refuse the request of any new access on Highway Safety Grounds where there is a reasonable alternative access (or arrangement) which the board considers to be a better solution; or no alternative where the Roads Section considers the proposal unsuitable.

### 3.8 Storm Water Drainage

The Road section shall endeavour to keep highway drains clear and free of blockages.

The Roads Section is required to approve any new or modified accesses onto a public road or Highway. As one of the conditions for this approval, it is clearly stated in the Land Development Control Plan that the applicant must be fully responsible for any storm water flowing from the existing public road onto the property and should bear the cost of installing drains as appropriate. If appropriate, conditions should also require the applicant to be fully responsible for managing any storm water that falls on the development site. **Storm water /roof water shall not be discharged onto the public highway.**

### 3.9 Repair of Damage to Roads

Under the Highway Ordinance any damage done upon the Highway by any motor vehicle, tracked vehicle, vehicle exceeding 14 tonnes or any animal, shall be made good at the expense of the owner of the vehicle or animal. The SS&HA Minister should give the owner seven days' notice to arrange the repairs. If these are not carried out, the SS&HA Minister may order the repairs to be done at the expense of the owner.

The Road Section will endeavour to repair other damages done to highways in as timely a manner as possible within available resources. Temporary excavation for services will be made safe when the excavation is not being supervised. If it is not feasible to reinstate the road surface overnight, then the area should be safely covered and cordoned off.

### 3.10 Car Parking

The Road Section will liaise with other stakeholders to develop suitable provision regarding car parking in lower Jamestown.

Notices may be in place to inform the public that all areas earmarked for car parking, including access into and out of the car parking area, shall be at the owners risk; this will also include the risks to property due to rock fall.

Applications to close any parking space on a temporary basis for controlled works shall be considered by the Head of Roads and Buildings Maintenance.

### 3.11 Signs and Road Markings

The Road Section will provide signs and road markings for road users' information and warning as appropriate and in accordance with the Highway Ordinance, Road Traffic Ordinance and Road Traffic Regulations. These will be sourced from the *UK Department for Transport Traffic Signs Manual Chapter 1-14*.

The SS&HA Advisory Board are the only entity to approve any request for any additional road markings or road signs.

### 3.12 Safety Rails

To protect road users, the Road Section supports the installation of safety rails above severe drops. However, new developments below existing roads will not normally be eligible for financial support from the government. It is expected that the developer will construct the property in a way that does not prejudice the safety of road users and protects the inhabitants from unnecessary risk. This will also be applicable to retaining walls at new entrances and will be brought to the attention of applicants at the planning application stage.

### 3.13 Street/ Security Lighting

The Streetlight section has a separate budget for the installation and maintenance of street/security lighting. The only existing lighting that is categorised as street lighting is in Jamestown. Applications for security lighting in other areas should be made to the Roads Section and prioritised with the Police Directorate, since demand is likely to outweigh resources.

### 3.14 Bridges

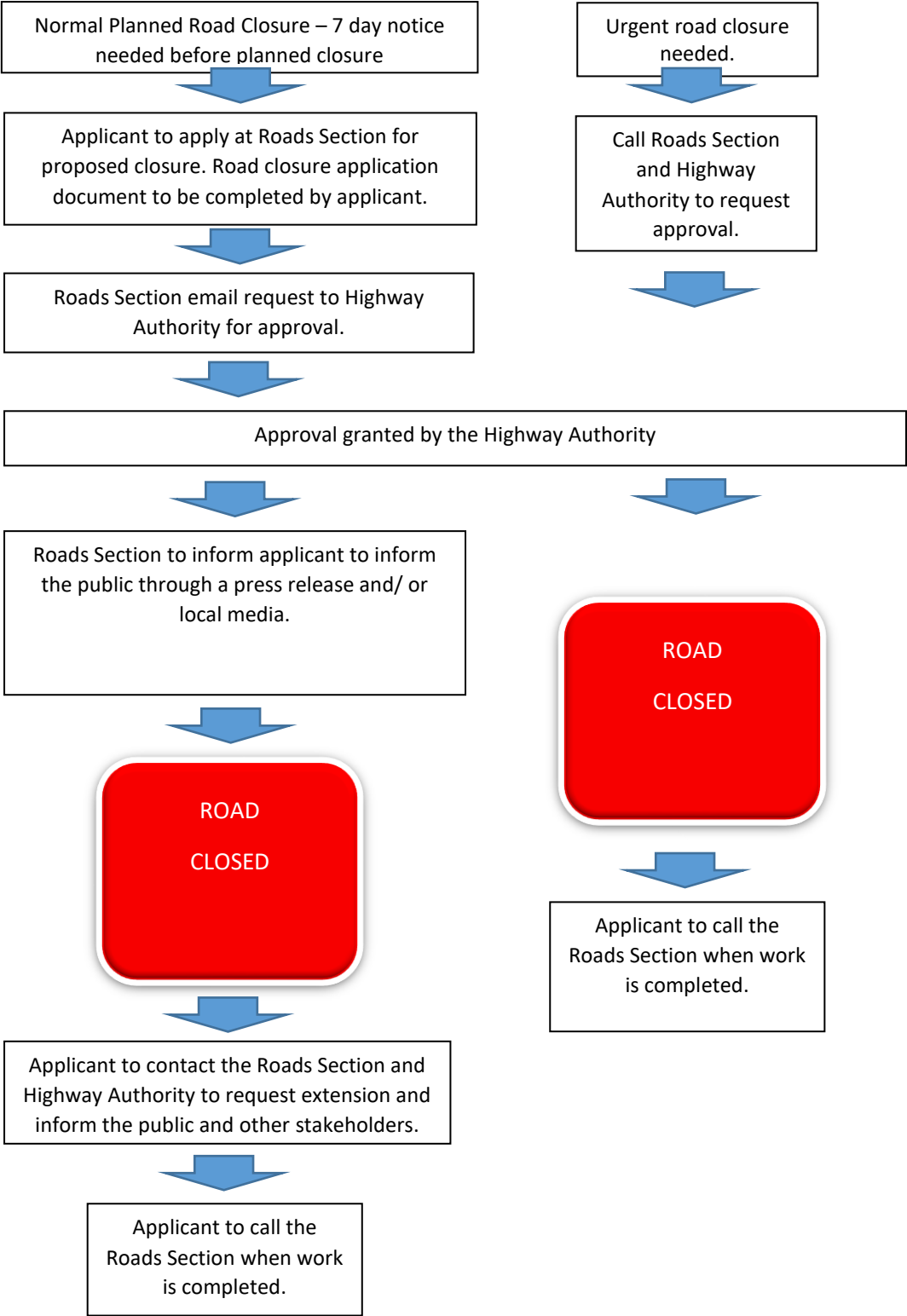
The Road Section will endeavour to maintain existing bridges on highways in a safe condition. No separate budget line exists so currently any bridge maintenance required is taken from the roads recurrent maintenance budget or a special bid must be made. There is a national weight limit of 14 tonnes gross vehicle weight on all government roads. However, some bridges have more restrictive weight limits and these are signed as appropriate. Due to the restrictive recurrent budget, all repairs to bridges will be on a reactive maintenance program as planned maintenance cost will outweigh recurrent budget.

### 3.15 Road Closures

The Road Section will seek the permission of the Highway Authority, usually through their Chairman, before closing a road to vehicular traffic. In cases of an emergency, and on the grounds of public safety, the Roads Section or Police may close the road immediately, and inform the Chairman at the first available opportunity. Following consultation with the Chairman of the Highway Authority, the press and media will be informed of the closure, the diversion route and the duration of the closure.

With any third party applying for controlled road closures, at least seven days' notice shall be given to the Roads Section with the request for closing of a specific road. The road section can be contacted for advice and to provide the appropriate signs. The hire of the signs may be charged. This must be conveyed to the applicant when a decision is given.

See Diagram 1 Overleaf



### 3.16 Access for Emergency Vehicles during Road Closures.

The Emergency Services will be required to accommodate and have in place arrangements to enable access for Emergency Vehicles during road closures. The Head of Roads and Building Maintenance or delegated person will liaise with the Joint Emergency Services Control Centre (JESCC) to give notice of all road closures. It will be the duty of the JESCC to liaise with all emergency services to ensure that the responding teams are aware of any road closures on St Helena.

To minimise risk to residents, members of the public and any working staff in the closed area, there must be a communication plan in place between the Road Closure Supervisor and the JESCC

The communication plan must have primary and secondary means of communicating, the Plan can be built using one or more of the following options.

- Handheld radio (Must be able to monitor the JESCC hailing frequency).
- Vehicle radio (Must be able to monitor the JESCC hailing frequency).
- Mobile phone (Must be tested from the area of work).

### 3.17 Delegated powers for road closure applications.

Road closures can be delegated into three different sections. Where possible applicants should give as much notice as possible. The idea is not to make the process onerous, but to make it user friendly and benefit the community by providing good information.

#### 3.17.1 Partial road closures.

For example:

- Scaffolding;
- To form a safe working zone;
- Closure of less than two car parking spaces;

The partial closure will remain in place for less than 13 weeks.

#### **Will the impact on the public or business operations be of an acceptable level?**

If not then the matter should be referred to the Highway Authority.

#### 3.17.2 Recurring road closures.

The Head of Roads and Building Maintenance will produce an annual calendar of known expected road closures for events such as the festival of lights. The list includes cruise ship visits. Each closure will have details of the following:

- Name of applicant/organisation.
- Name of road to be closed.
- Date and duration of closure.
- Diversion route.
- Provision of adequate sign and cordons.

This schedule of planned road closures will be brought to the attention of the Highway Authority on a regular basis to keep it informed of dates and any changes.

#### 3.17.3 Planned operational road closures.

These are required for situations where it is necessary to close the road to undertake projects or repairs. Application forms should be submitted to the Road Section at least seven days before the road closure. Each closure will have details of the following:

- Name of Company/Organisation.

- Name of road to be closed.
- Date and duration of closure.
- Diversion route.
- Provision of adequate signs and cordons.
- Media has been informed.

**If the answer to all of the following questions is a clear 'yes' then the decision is delegated to an officer level. If, however, the answer is 'no' to one or more of these questions, then the decision should be brought to the Highway Authority either at a formal meeting, or if necessary to an extraordinary meeting or email communication.**

- Is there a viable diversion route?
- Can temporary access be made available along the closed road for emergency services?
- Will the impact on the public or business operations be of an acceptable level?
- Is the proposed closure no more than two working days?

#### **3.17.4 Emergency road closures.**

Required in the interests of public safety, an emergency event forces a road closure. This can be because of a road traffic accident, or storm damage. Each closure should have current or retrospective details including:

- Name of road affected.
- The name of the person authorising the closure.
- Damage to infrastructure.
- Details of responsible parties.
- Details of media involvement.

The authority to instigate an emergency road closure is delegated to the Head of Roads and Building Maintenance or Roads Inspector. The Head of Roads and Building Maintenance / Roads Inspector should, as soon as possible, inform the members of the Highway Authority of the decision.

## Annex 1: List of Roads and Section Lengths, 2024

| PRIMARY                    |                          |                 |               |            |
|----------------------------|--------------------------|-----------------|---------------|------------|
| Area / District            | Route Name / Road Name   | From            | To            | Length (m) |
| Alarm Forest               | Sea View Road            | The Briars      | Gordon's Post | 2281       |
| Alarm Forest               | Alarm Forest/<br>Tomb Rd | Gordon's Post   | Hutt's Gate   | 2152       |
| HTH                        | HTH                      | White Wall      | Redhill       | 958        |
| Jamestown                  | Ladder Hill              | China Lane      | Shy Road      | 450        |
| Jamestown                  | Ladder Hill              | Shy Road        | Ladder Hill   | 700        |
| Jamestown                  | Ladder Hill              | Ladder Hill     | White Wall    | 2025       |
| Jamestown                  | Side Path                | The Canister    | Field Road    | 1500       |
| Jamestown                  | Side Path                | Field Road      | The Briars    | 119        |
| Jamestown                  | Market Street            | China Lane      | The Canister  | 920        |
| Jamestown                  | Main Street              | The Canister    | The Arch      | 262        |
| Longwood                   | Longwood Road            | Hutt's Gate     | Longwood Gate | 1744       |
| Longwood                   | Avenue/<br>Bottomwoods   | Longwood Gate   | Bottomwoods   | 2406       |
| New Ground                 | HTH / Saint Pauls        | White Wall      | Sapper Way    | 900        |
| Rupert's to Prosperous Bay | Haul Road (new)          | Rupert's Valley | Airport       | 14360      |
| St Pauls                   | St Pauls                 | Redhill         | White Gate    | 867        |
| St Pauls                   | St Pauls                 | White Gate      | Bates Branch  | 1500       |
| St Pauls                   |                          | White Gate      | Scotland      | 1000       |



| <b>SECONDARY</b>       |                               |                      |                               |                   |
|------------------------|-------------------------------|----------------------|-------------------------------|-------------------|
| <b>Area / District</b> | <b>Route Name / Road Name</b> | <b>From</b>          | <b>To</b>                     | <b>Length (m)</b> |
| Blue Hill              | Blue Hill 1                   | Bates Branch         | Frenches Gut                  | 2057              |
| Blue Hill              | Blue Hill 2                   | Frenches Gut         | Thompson's Wood               | 1910              |
| Diana's Peak Ring Road | Diana's Peak Ring Road        | Hutt's Gate          | Silver Hill                   | 5633              |
| Diana's Peak Ring Road | Ridges                        | Bates Branch         | Stitches Ridge                | 1690              |
| Diana's Peak Ring Road | Sandy Bay                     | Stitches Ridge       | Pine Gate                     | 1385              |
| Francis Plain          |                               | White Gate           | Watercourse                   | 977               |
| Francis Plain          |                               | Watercourse          | Lemon Tree Gut                | 884               |
| Francis Plain          |                               | Lemon Tree Gut       | The Dungeon                   | 494               |
| Francis Plain          |                               | The Dungeon          | Hutt's Gate                   | 2202              |
| Francis Plain          | Francis Plain                 | Watercourse          | Prince Andrew School          | 786               |
| Francis Plain          | Francis Plain                 | Prince Andrew School | Harper's Valley               | 497               |
| Francis Plain          | Francis Plain                 | Harpers Valley       | Redhill                       | 730               |
| Jamestown              | Briars Village                | Side Path/Briars     | The Briars                    | 533               |
| Jamestown              | Constitution Hill             | China Lane           | Side Path/Briars              | 1580              |
| Longwood               | Deadwood Road                 | Longwood Gate        | Deadwood Plain                | 1769              |
| Longwood               | Horse Point Landfill junction | Haul Road            | End of surfaced road          | 83                |
| New Ground             |                               | Sapper Way           | Sunny Side                    | 1250              |
| New Ground             |                               | New Ground           | Donkey Plain                  | 477               |
| New Ground             | Sapper Way                    | New Ground           | Model Cottage                 | 636               |
| Rupert's Valley        | Field Road                    | Side Path/Field Rd   | Haul Road Junction – Rupert's | 1563              |

|                 |                         |                |                                     |      |
|-----------------|-------------------------|----------------|-------------------------------------|------|
| Rupert's Valley | Power Station Road      | Haul Road      | Power Station Junction              | 68   |
| Rupert's Valley | New BFI road            | Haul Road      | End of surfaced section new BFI     | 562  |
| Rupert's Valley | Fuel receiving facility | Haul Road      | Fuel receiving station – beach site | 60   |
| Sandy Bay       | Sandy Bay               | Pine Gate      | Jenkin's Cottage                    | 2732 |
| St Pauls        |                         | Sunny Side     | Rosemary Plain                      | 787  |
| St Pauls        |                         | Scotland       | Spring Gut                          | 990  |
| St Pauls        |                         | Spring Gut     | Rosemary Plain                      | 700  |
| St Pauls        |                         | Scotland       | Sunny Side                          | 1123 |
| St Pauls        | Plantation Upper        | Redhill        | Model Cottage                       | 400  |
| St Pauls        | Plantation Upper        | Model Cottage  | Plantation Junction                 | 406  |
| Thompsons Hill  |                         | Rosemary Plain | Junction Ken Henry                  | 1617 |

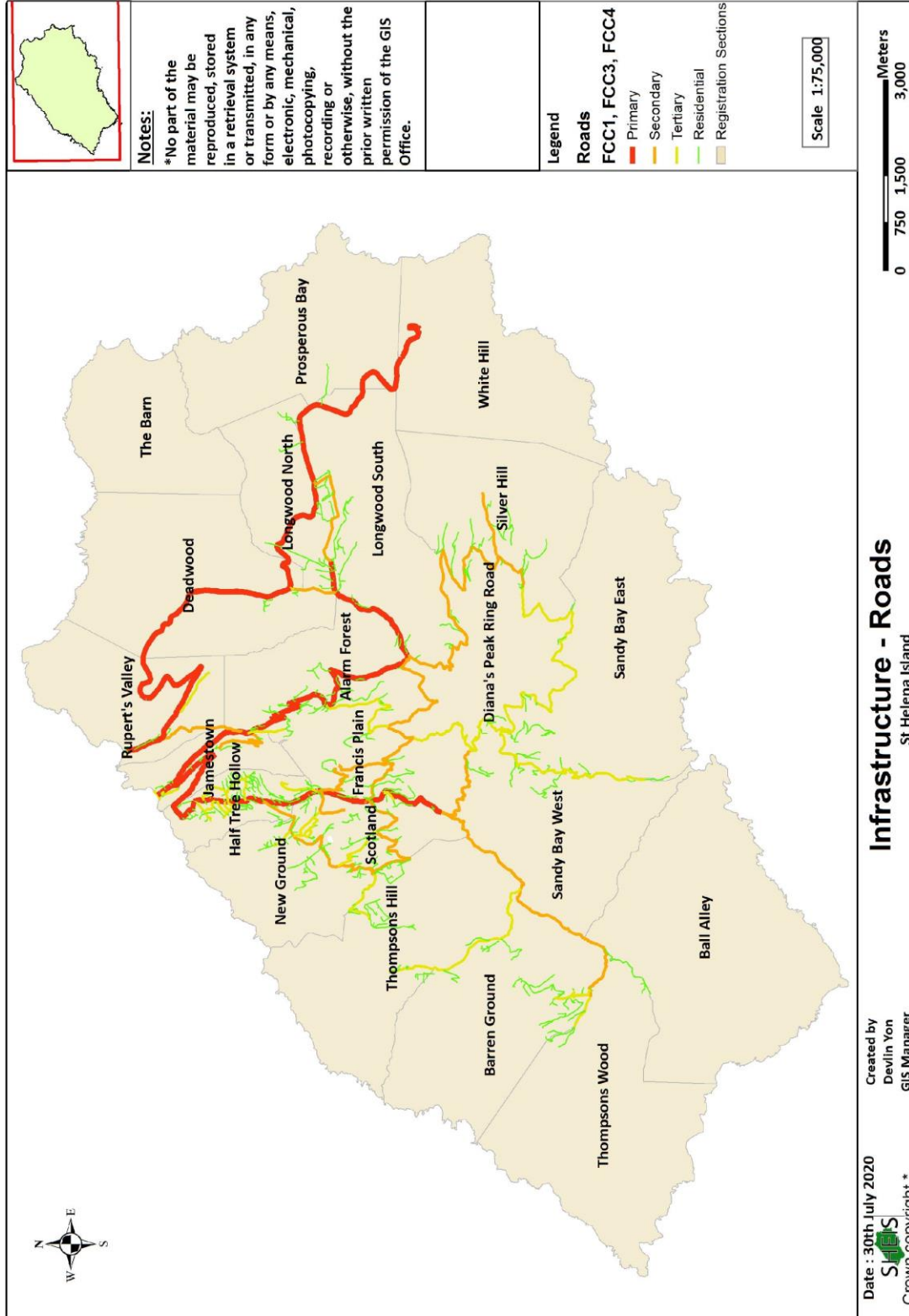
| <b>TERTIARY</b>        |                               |                           |                             |                   |
|------------------------|-------------------------------|---------------------------|-----------------------------|-------------------|
| <b>Area / District</b> | <b>Route Name / Road Name</b> | <b>From</b>               | <b>To</b>                   | <b>Length (m)</b> |
| Alarm Forest           | Alarm Forest                  | Children's Hut            | Sane's Valley               | 236               |
| Blue Hill              | Blue Hill 3                   | Thompsons Wood            | Blue Hill CC                | 1239              |
| Blue Hill              | Blue Hill 4                   | Frenches Gut              | Head O'Wain                 | 1081              |
| Blue Hill              | Horse Pasture Road            | Head O'Wain               | Saddle                      | 1124              |
| Blue Hill              | Horse Pasture Road            | Saddle                    | Horse Pasture               | 960               |
| Blue Hill              | High Hill                     | Red Gate                  | High Hill                   | 670               |
| Blue Hill              | Barren Ground                 | Steven's Junction         | Stevens                     | 70                |
| Blue Hill              | Barren Ground                 | Blue Hill CC              | Steven's Junction           | 370               |
| Blue Hill              | Thompson's Wood               | Thompson's/ Wood Junction | Thompson's Wood picnic area | 1120              |
| Blue Hill              | Barren Ground                 | Stevens Junction          | Barren Ground Junction      | 980               |
| Blue Hill              | Barren Ground                 | Barren Ground Junction    | March's                     | 220               |
| Blue Hill              | Barren Ground                 | Barren Ground Junction    | Yon's                       | 270               |
| Diana's Peak RR        | Stitches Ridge                | Lemon Tree Gut            | Stitches Ridge              | 1512              |
| Gordon's Post          |                               | Gordons Post              | The Dungeon                 | 2190              |
| HTH                    | Wire Bird Drive               | Community Centre          | Patricia Sim                | 240               |
| HTH                    | Half Tree Hollow              | HTH Salvation Army        | Cow Path                    | 510               |
| HTH                    | Cow Path                      | Sundale Junction          | Cow Path Junction           | 425               |
| HTH                    | Lantana Drive                 | Community Centre          | Crescent Drive              | 625               |
| HTH                    | Ladder Hill                   | L/Hill Gate               | Fire Station                | 100               |
| HTH                    | Half Tree Hollow              | Half Way                  | Timm's                      | 630               |
| HTH                    | Wireless Station              | HTH C/Centre              | Sundale                     | 351               |
| HTH                    | Cardinal Drive                | Salt's Junction           | Theresa Bowers              | 314               |
| HTH                    | Evergreen Drive               | Timmy Sim                 | Evergreen                   | 367               |
| HTH                    | Tern Drive                    | Three Tanks               | Rock Club                   | 278               |

|            |                      |                       |                      |     |
|------------|----------------------|-----------------------|----------------------|-----|
| HTH        | Robinson Drive       | Cow Path              | Cow Path             | 225 |
| HTH        | Wind swept Lane      | Cow Path              | Cow Path             | 128 |
| HTH        | Cow Path             | Cow Path              | Leatrice Benjamin    | 176 |
| HTH        | Lower HTH            | Junction Nr Rock Club | Junction Elaine Arms | 304 |
| HTH        | Ladder Hill pavement | Cliff Top             | Three Tanks          | 294 |
| HTH        | Cow Path             | Cow Path              | Anne Dillion         | 88  |
| HTH        | Barn View Lane       | Cow Path              | Patrick Andrews      | 106 |
| HTH        | Ladder Hill          | RE Yard               | Red Roof Jambs       | 135 |
| HTH        | Clinic Drive         | HTH Salvation Army    | Pick & Pay           | 180 |
| HTH        | Sugar Loaf View      | Cow Path              | Cow Path             | 178 |
| HTH        | Cow Path             | Cow Path              | William George       | 107 |
| HTH        | Evergreen Drive      | Above Timmy           | Alan Hudson          | 97  |
| HTH        | Cow Path             | Cow Path              | Neil Joshua          | 127 |
| HTH        | Cow Path             | Cow Path              | Cecil George         | 158 |
| HTH        | Rock Side Lane       | Cow Path              | Cow Path             | 176 |
| HTH        | Ladder Hill          | Rock Club Junction    | Nr work shop         | 146 |
| Jamestown  | Shy Road             | Ladder Hill           | Jamestown            | 814 |
| Jamestown  | Barracks Square      | Barracks Square       | Barracks Square      | 89  |
| Jamestown  | Narrabacks           | Bridge                | Church Lane          | 276 |
| Jamestown  | Back Way             | Brow S/Path           | Seal's Corner        | 232 |
| Jamestown  | Nose Gay Lane        | Napoleon Street       | Bridge               | 56  |
| Jamestown  | Shy Road             | Shy Road              | Prison               | 200 |
| Jamestown  | Maldavia Road        | St John's Junction    | Constantine's        | 395 |
| Jamestown  | Scout Hall           | Napoleon Street       | Scout Hall           | 90  |
| Jamestown  | Quarry Road          | St John's Junction    | Georges/Stevens      | 50  |
| Jamestown  | Botanical gardens    | Main Street           | Botanical gardens    | 70  |
| Level wood | Level wood           | Silver Hill           | Bellstone            | 533 |
| Level wood | Red Hill             | Red Hill              | Red Hill             | 448 |
| Level wood | Bell Stone           | Taglate               | Bellstone            | 590 |

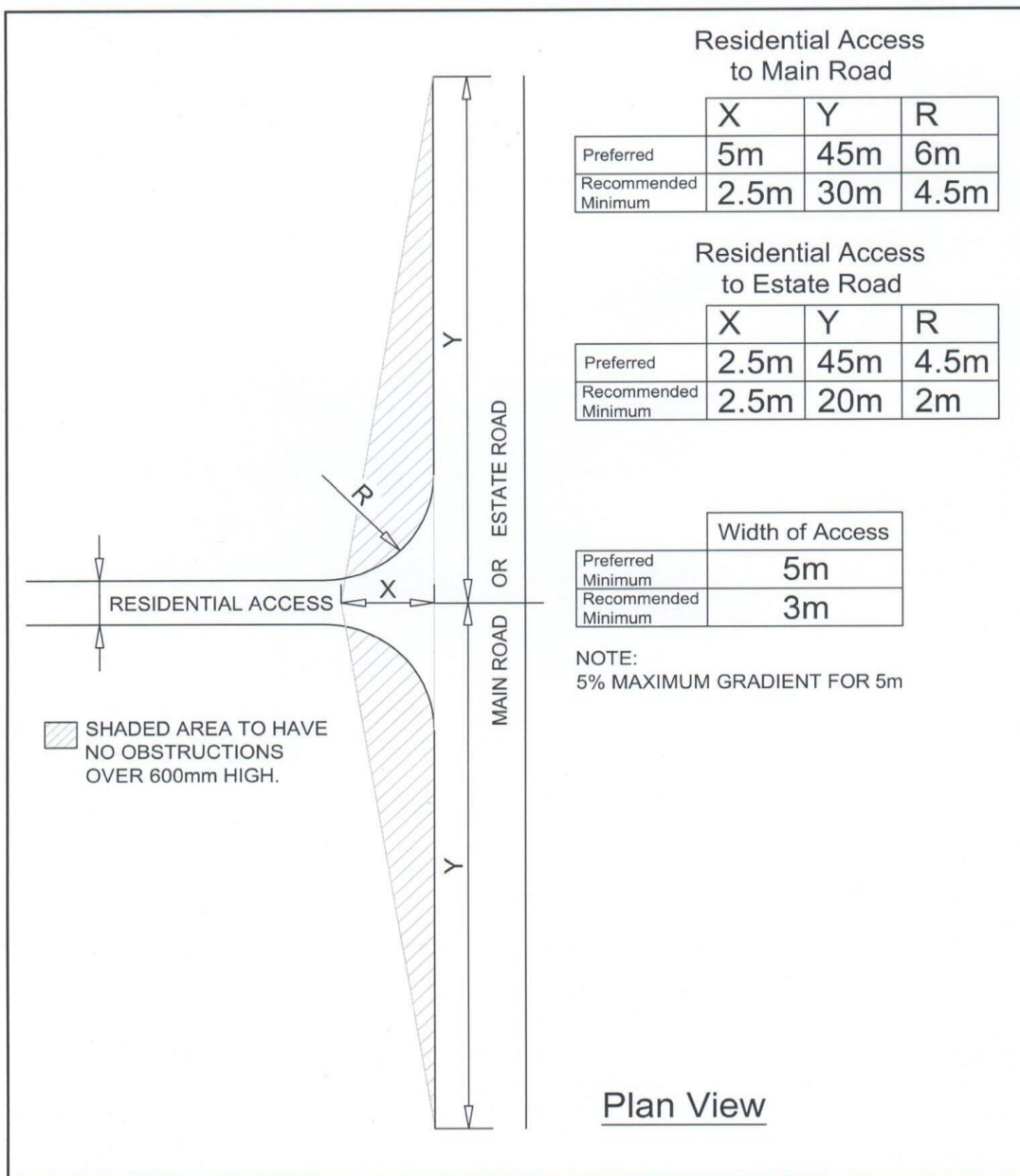
|            |                         |                          |                     |      |
|------------|-------------------------|--------------------------|---------------------|------|
| Level wood | Level wood              | Clinic                   | Kingdom Hall        | 498  |
| Level wood | Level wood Flag         | Silver Hill Shop         | Flag                | 914  |
| Level wood | Kennedys'               | Flagg                    | Kennedys'           | 814  |
| Longwood   | Willow Bank Road        | Hutt's Gate              | Willow Bank         | 370  |
| Longwood   | Colt Sheds              | Longwood Avenue          | Colt Sheds          | 1220 |
| Longwood   | Longwood Hangings       | Longwood Gate            | Fishers Valley      | 620  |
| Longwood   | Longwood Hangings       | Napoleon's House         | Longwood Hangings   | 1130 |
| Longwood   | Bottom Woods (u)        | junction main road       | Upper               | 227  |
| Longwood   | Black Field (1)         | Longwood Avenue          | Black Field         | 255  |
| Longwood   | Longwood Hangings       | Longwood Hangings        | White rabbits       | 340  |
| Longwood   | Black Field (2)         | Longwood Avenue          | Black Field         | 272  |
| Longwood   | Mulberry Gut            | Colt Sheds               | Mulberry Gut        | 170  |
| Longwood   | Bottom Woods (l)        | Junction                 | Lower               | 330  |
| Longwood   | Clinic Road             | Longwood Road            | Clinic              | 235  |
| Longwood   | Ropery Field            | Golf Course              | Ropery Field (east) | 100  |
| Longwood   | Community Centre        | Lg/wood Avenue           | Community Centre    | 196  |
| Longwood   | Lg/wood Avenue          | Lg/wood Avenue           | Masie's Shop        | 47   |
| Longwood   | Ropery Field            | Golf Course              | Ropery Field (west) | 100  |
| New Ground | Sapper Way              | Junction Winnie McDaniel | Anthony Leo         | 423  |
| New Ground | New Ground              | Patsy Greentree          | Lower               | 91   |
| New Ground | New Ground              | Colin Williams           | Higher              | 86   |
| Sandy Bay  | Rock Rose to Green Hill | Bellstone                | Pine Gate           | 6076 |
| Sandy Bay  | Sandy Bay               | Jenkins Cottage          | Blarney Bridge      | 1490 |
| St Pauls   | Plantation Upper        | Plantation Junction      | White Gate          | 444  |
| St Pauls   | Plantation Lower        | Plantation Junction      | White Gate          | 543  |
| St Pauls   | Farm Building           | Spring Gut               | Rosemary Plain      | 1000 |
| St Pauls   | Lower C/Plain           | Cleugh's Plain Point     | Peter Bowers        | 530  |

|                |                    |                           |                   |     |
|----------------|--------------------|---------------------------|-------------------|-----|
| St Pauls       | Sapper Way         | Junction Kenneth Williams | Arms Flat         | 308 |
| St Pauls       | Plantation Stables | Plantation stables        | Plantation square | 340 |
| St Pauls       | Kunjie Field       | Scotland Roundabout       | Lionel Leo        | 341 |
| St Pauls       | Pouncey's          | Pouncey's Junction        | Rodney Benjamin   | 525 |
| St Pauls       | Upper C/Plain      | Cleugh's Plain Point      | Helen Leo         | 196 |
| St Pauls       | Lower C/Plain      | Junction Brenda George    | Mike Durnford     | 167 |
| St Pauls       | Princes Lodge      | Princes Lodge             | Junction          | 90  |
| St Pauls       | Guinea Grass       | Junction Guinea Grass     | Brian Yon         | 175 |
| St Pauls       | Gum Woods          | Knollcombes               | Baha'i Centre     | 290 |
| St Pauls       | Clay Gut           | Clay Gut Junction         | Clay Gut          | 321 |
| St Pauls       | Red Hill           | Red Hill Junction         | Below High Knoll  | 160 |
| Thompsons Hill | Thompson Hill      | Junction Ken Henry        | Blooming's Field  | 554 |

## Annex 2: Map of roads



### Annex 3: Road Visibility Splays



#### DIRECTORATE OF INFRASTRUCTURE & UTILITIES

| Revisions                   | Date | Ini. | No. | TITLE                         | Drawn    | Ch'd.             |
|-----------------------------|------|------|-----|-------------------------------|----------|-------------------|
|                             |      |      |     | <b>ROAD VISIBILITY SPLAYS</b> | JCB      |                   |
|                             |      |      |     |                               | Eng.     | App'd             |
|                             |      |      |     |                               | Scale    | Date              |
|                             |      |      |     |                               | N.T.S    | 10/08/2011        |
|                             |      |      |     |                               | Org. No. | <b>25/01/2011</b> |
| TECHNICAL SERVICES DIVISION |      |      |     |                               |          |                   |