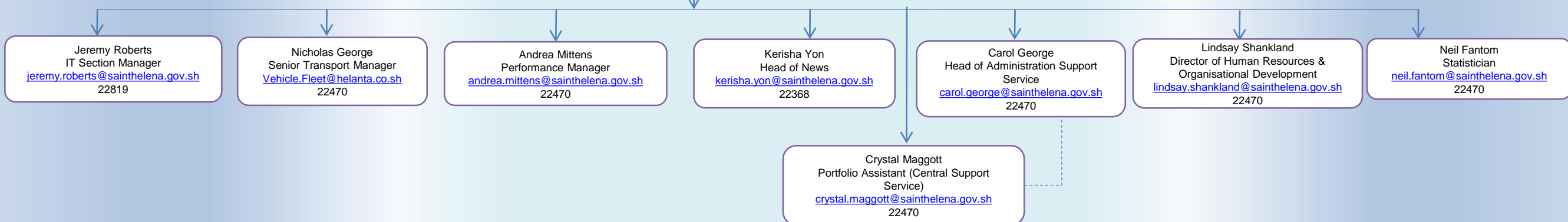


CENTRAL SUPPORT SERVICE – OCTOBER 2021

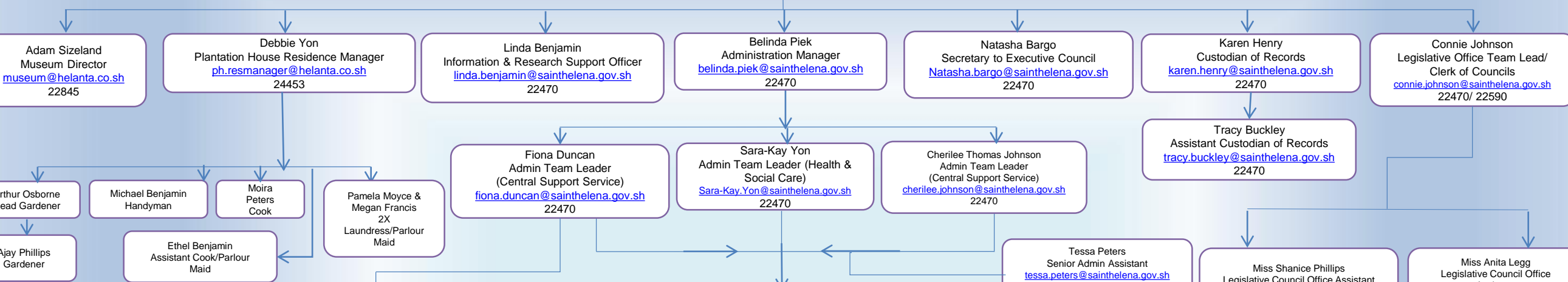
Gillian Francis
Deputy Chief Secretary
gillian.francis@sainthelena.gov.sh
22314



See separate Organograms below for Administration Services, the Information Technology section, the Press Office, the Statistics Team, the Transport Section. Human Resources & Organisational Development & the Chief Secretary's office

CENTRAL SUPPORT SERVICE

Carol George
 Head of Administration Support Service
carol.george@sainthelena.gov.sh
 22470



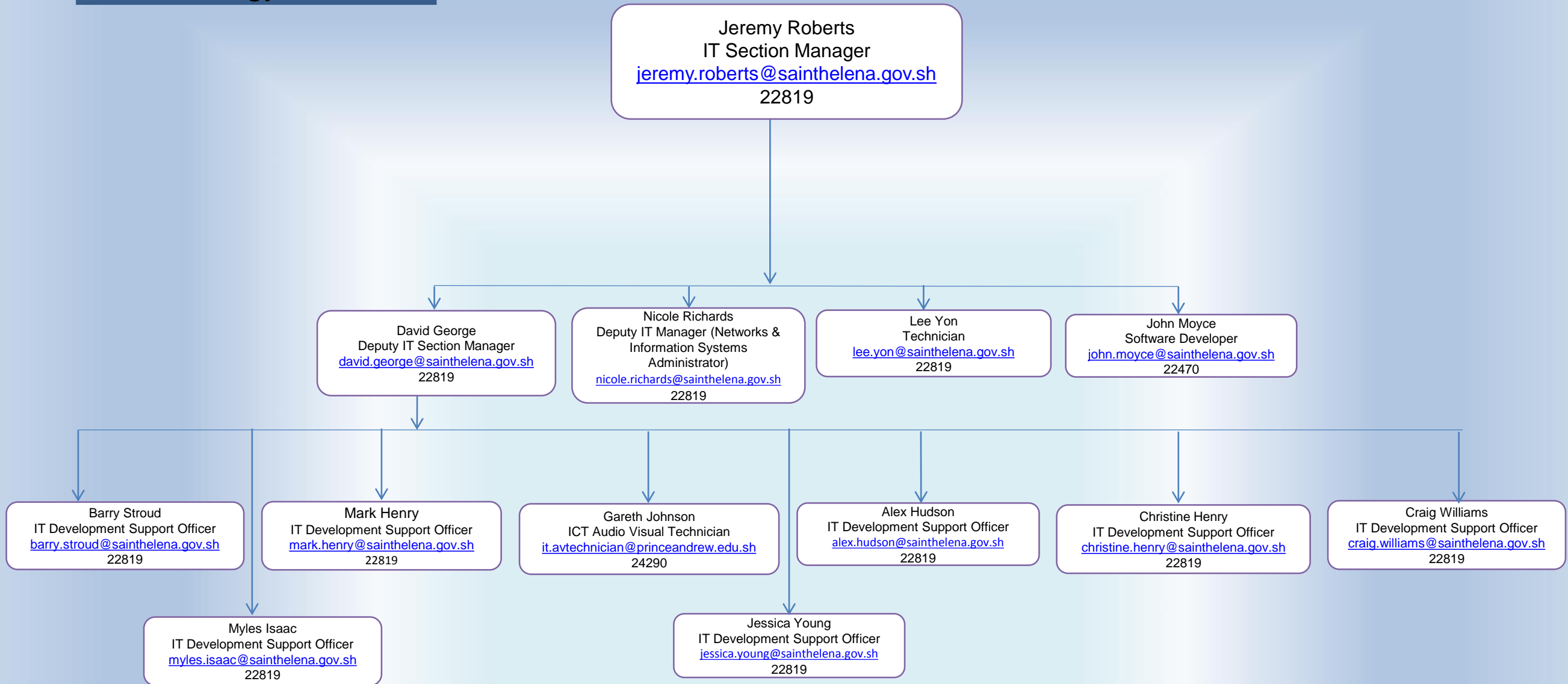
Administration Assistants x12

- | | |
|--------------------------------------------------------------------------------------------------------------------------------------------------|-----------------------------------------------------------------------------------------------------------------------------------------|
| Lisa Thomas
Admin Assistant
lisa.thomas@sainthelena.gov.sh
22500 | Dayna Henry
Admin Assistant
dayna.henry@sainthelena.gov.sh
22470 |
| Kaylee O'Dean-Piek
Admin Assistant
kaylee.odean-piek@sainthelena.gov.sh
24724 | Cecily Bateman
Admin Assistant
cecily.bateman@sainthelena.gov.sh
22500 |
| Rea Williams
Admin Assistant
rea.williams@sainthelena.gov.sh
24724 | Yvonne Thomas
Admin Assistant
yvonne.thomas@sainthelena.gov.sh
22500 |
| Mandy Constantine
Admin Assistant
mandy.constantine@sainthelena.gov.sh
22607 | Kacy Henry
Admin Assistant
kacy.henry@sainthelena.gov.sh
23312/ 23343 |
| Santana Fowler
Admin Assistant
santana.fowler@sainthelena.gov.sh
22607 | Delia Carter
Admin Assistant
delia.carter@sainthelena.gov.sh
23312/ 23343 |
| Linda Cranfield
Admin Assistant
linda.cranfield@sainthelena.gov.sh
22270 | |
| Janine Bagley
Admin Assistant
transport.coordinator@helanta.co.sh
23208 | |

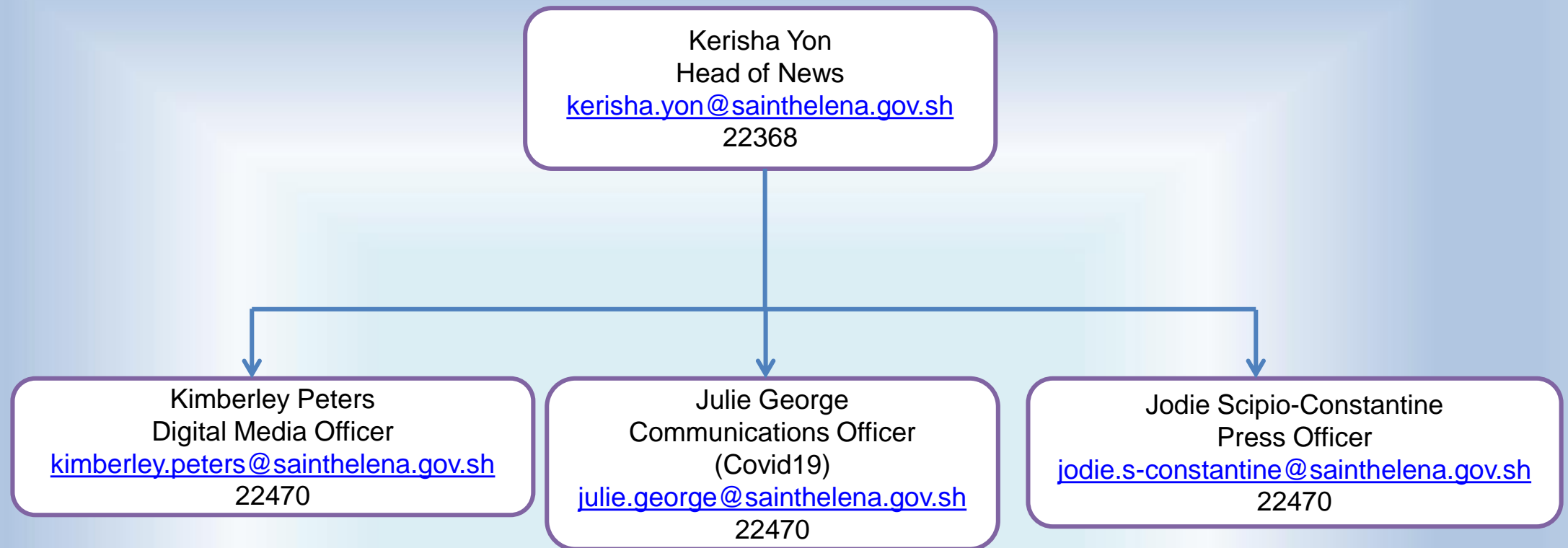
Portfolio Assistants x6

- | | |
|-------------------------------------------------------------------------------------------------------------------------------------------------------------------------|-------------------------------------------------------------------------------------------------------------------------------------------------------------------------------------------------|
| Karen Isaac
Portfolio Assistant (ENRP)
karen.isaac@sainthelena.gov.sh
24724 | Delphia Stevens
Portfolio Assistant (Safety, Security & Home Affairs)
delphia.stevens@sainthelena.gov.sh
25841 |
| Crystal Maggott
Portfolio Assistant (Central Support Service)
crystal.maggott@sainthelena.gov.sh
22470 | Jacqueline Leo
Portfolio Assistant (Treasury, Infrastructure & Sustainable Development)
jacqueline.leo@sainthelena.gov.sh
22470 |
| Peta Henry
Portfolio Assistant (Health & Social Care)
peta.henry@sainthelena.gov.sh
22500 | Tracy Thomas
Portfolio Assistant (Education, Skills & Employment)
tracey.thomas@sainthelena.gov.sh
22607 |

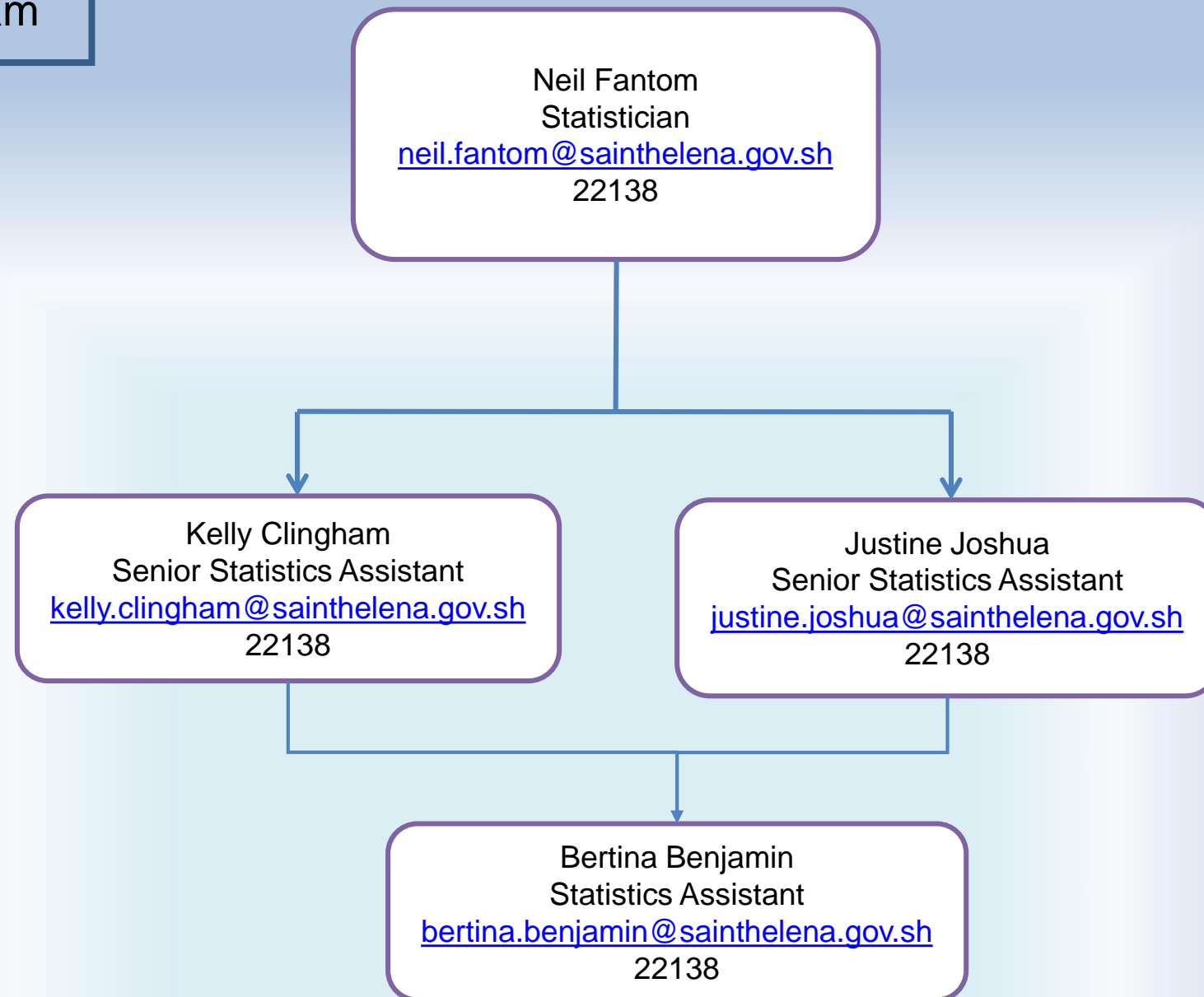
The Information Technology Section



The Press Office Team



The Statistics Team



The Transport Division

Nicholas George
Senior Transport Manager
vehicle.fleet@helanta.co.sh
23208

Patricia Benjamin
General Maintenance
Operative
23208

Theodore Fowler Garage
Manager
garage.manager@helanta.co.sh
23208

Paula Moyce
Auto Spares Stock
Controller
transport.sc@helanta.co.sh
23208

Olive Buckley
Auto Spares Stock Controller
transport.stores@helanta.co.sh
23208

Dencil Yon
Foreman (Plant
Operations)
23208

Steve Bagley
Foreman - Mechanic
23208

Mechanics x10
23208
Reynold Knipe
Lester Henry
Patrick Crowie
Aubrey Peters
Gorange Williams
Neil Joshua
Aubrey Knipe
Mulvin Thomas
Dylan Stevens
Mechanic Trainee – Tyler Brady

The Central Human Resources & Organisational Development Team

Lindsay Shankland
Director of Human Resources & Organisational Development
lindsay.shankland@sainthelena.gov.sh
22470

Victoria Kellett
Fit for the Future Programme Manager
victoria.kellett@sainthelena.gov.sh
22470

Jacqueline Bennett
HR Business Partner
jacqueline.bennett@sainthelena.gov.sh
22470

Bronwen Yon
Senior HR Business Partner
bronwen.yon@sainthelena.gov.sh
22470

Jackie Moyce
Learning & Development Advisor
jackie.moyce@sainthelena.gov.sh
22470

Laura Stroud
Organisational Development Advisor
laura.stroud@sainthelena.gov.sh
22470

Meliza Lawrence
Employee Relations Advisor
meliza.lawrence@sainthelena.gov.sh
22470

Delma Stevens
Assistant HR Business Partner
delma.stevens@sainthelena.gov.sh
22470

Tina Sim
Assistant HR Business Partner
tina.sim@sainthelena.gov.sh
22470

Clare O'Dean
Assistant HR Business Partner
clare.odean@sainthelena.gov.sh
22470

Jamie Drabble
Internal Communications Officer
jamie.drabble@sainthelena.gov.sh
22470

Dianne Venning
HR Officer
dianne.venning@sainthelena.gov.sh
22470

Karen Thomas
Senior HR Assistant
karen.thomas@sainthelena.gov.sh
22470

Sylvia March
HR Assistant
sylvia.march@sainthelena.gov.sh
22470

Sharina Williams
HR Officer
sharina.williams@sainthelena.gov.sh
22470

Vacant
Senior HR Assistant
22470

Emma Piek
HR Assistant
emma.piek@sainthelena.gov.sh
22470

Anya Richards
HR Officer
anya.richards@sainthelena.gov.sh
22470

Megan Crowie
HR Assistant
megan.crowie@sainthelena.gov.sh
22470

The Chief Secretary's Office

