



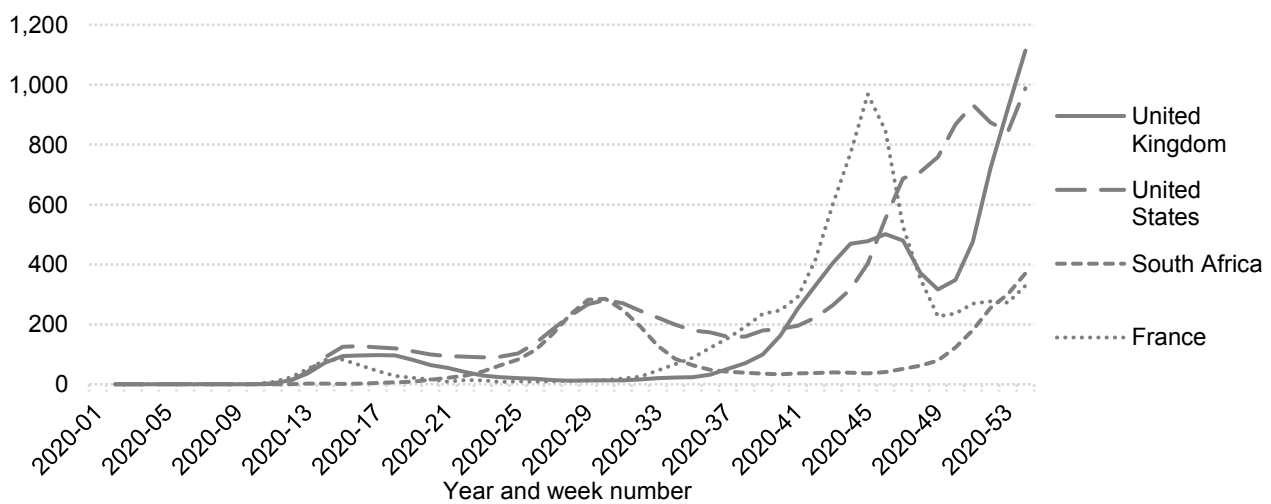
This is a regular weekly update to the classification of countries based on their current 14-day COVID-19 reported cumulative case prevalence rate published by the European Centre for Disease Prevention and Control (ECDC), and the latest quarantine status issued by the UK Government.

- GOLD:** No reported cases in last 14 days and exempt from UK quarantine
- GREEN:** 14-day reported cumulative case prevalence higher than zero but less than the medium threshold (0.04%) and exempt from UK quarantine
- AMBER:** 14-day reported cumulative case prevalence above the medium threshold (0.04%) but less than the high threshold (0.10%) or countries who are below the medium threshold but not exempt from UK quarantine
- RED:** All countries with 14-day reported cumulative case prevalence above the high threshold (0.10%)
- Not classified:** Countries not exempt from UK quarantine but with no reported cases, and countries whose data are not reported by ECDC
- Note:** Cases reported on Ascension or the Falkland Islands will only be included in prevalence rates if they are detected outside of quarantine

Classification changes since the last update on January 8, 2021:

Azerbaijan	Red	to →	Amber
Guinea-Bissau	Not classified	to →	Amber
Iceland, Japan, St Lucia	Green	to →	Amber
Barbados, Cape Verde, Kuwait, Lesotho, Libya, Mexico, Qatar	Amber	to →	Red
Liberia, Sudan	Amber	to →	Not classified

14-day reported case prevalence rates per 100,000 population, selected countries:



This Update is produced by the St Helena Statistics Office. For full details of the methodology and data sources, please see <https://www.sainthelena.gov.sh/stats-bulletin-8-covid-19>.

Country	Population	14-day case prevalence, per 100,000	Classification (* would be classed at lower risk level if UK quarantine restrictions were lifted)
Ascension	806	0.0	Gold
Falkland Islands	3,483	0.0	Gold
Lao PDR	7,275,556	0.0	Gold
Montserrat	4,999	0.0	Gold
Solomon Islands	686,878	0.0	Gold
St Helena	4,577	0.0	Gold
Tristan da Cunha	248	0.0	Gold
Vanuatu	307,150	0.0	Gold
Vietnam	97,338,583	0.1	Green
Cambodia	16,718,971	0.2	Green
Taiwan	23,816,775	0.2	Green
East Timor	1,318,442	0.6	Green
New Caledonia	285,491	0.7	Green
Fiji	896,444	0.8	Green
Australia	25,499,881	1.2	Green
Greenland	56,772	1.8	Green
St Kitts and Nevis	53,192	3.8	Green
Saudi Arabia	34,813,867	4.6	Green
Brunei	437,483	4.8	Green
Northern Mariana Islands	57,557	5.2	Green
Thailand	69,799,978	6.1	Green
Singapore	5,850,343	6.5	Green
Mongolia	3,278,292	9.3	Green
Guernsey	64,468	12.4	Green
Rwanda	12,952,209	12.4	Green
British Virgin Islands	30,237	13.2	Green
Anguilla	15,002	13.3	Green
Grenada	112,519	16.9	Green
Antigua and Barbuda	97,928	18.4	Green
Republic of Korea	51,269,183	22.3	Green
Bhutan	771,612	24.6	Green
Isle of Man	85,032	25.9	Green
Sri Lanka	21,413,250	34.2	Green
Yemen	29,825,968	0.0	Amber*
China	1,439,323,774	0.1	Amber*
Somalia	15,893,219	0.2	Amber*
Central African Republic	4,829,764	0.2	Amber*
Papua New Guinea	8,947,027	0.3	Amber*
Tajikistan	9,537,642	0.7	Amber*
Benin	12,123,198	0.8	Amber*
Madagascar	27,691,019	1.0	Amber*
Mauritius	1,271,767	1.4	Amber*
South Sudan	11,193,729	1.5	Amber*
Guinea-Bissau	1,967,998	1.6	Amber*
Nicaragua	6,624,554	1.6	Amber*
Burundi	11,890,781	1.8	Amber*
Cameroon	26,545,864	2.2	Amber*
Guinea	13,132,792	2.3	Amber*
Uzbekistan	33,469,199	2.3	Amber*

Country	Population	14-day case prevalence, per 100,000	Classification (* would be classed at lower risk level if UK quarantine restrictions were lifted)
Haiti	11,402,533	2.4	Amber*
Angola	32,866,268	2.7	Amber*
Congo, Democratic Republic of	89,561,404	2.9	Amber*
Niger	24,206,636	3.0	Amber*
Chad	16,425,859	3.2	Amber*
Gambia	2,416,664	3.3	Amber*
Equatorial Guinea	1,402,985	3.4	Amber*
Sierra Leone	7,976,985	3.6	Amber*
Afghanistan	38,928,341	4.1	Amber*
Kenya	53,771,300	4.2	Amber*
Mali	20,250,834	4.4	Amber*
Togo	8,278,737	4.6	Amber*
Ethiopia	114,963,583	4.8	Amber*
Ghana	31,072,945	5.6	Amber*
Djibouti	988,002	5.9	Amber*
Cote d'Ivoire	26,378,275	6.0	Amber*
Nigeria	206,139,587	7.4	Amber*
Syria	17,500,657	7.6	Amber*
Algeria	43,851,043	8.0	Amber*
Bangladesh	164,689,383	8.1	Amber*
Uganda	45,741,000	8.4	Amber*
Burkina Faso	20,903,278	9.2	Amber*
Gabon	2,225,728	10.3	Amber*
Trinidad and Tobago	1,399,491	10.7	Amber*
Malawi	19,129,955	11.5	Amber*
Congo	5,518,092	11.7	Amber*
Mozambique	31,255,435	12.9	Amber*
Pakistan	220,892,331	14.0	Amber*
Eritrea	3,546,427	14.6	Amber*
Myanmar	54,409,794	16.0	Amber*
Philippines	109,581,085	16.2	Amber*
Venezuela	28,435,943	16.4	Amber*
Senegal	16,743,930	16.8	Amber*
Iraq	40,222,503	16.8	Amber*
Egypt	102,334,403	16.9	Amber*
India	1,380,004,385	18.7	Amber*
Nepal	29,136,808	22.6	Amber*
Sao Tome and Principe	219,161	23.7	Amber*
Kyrgyzstan	6,524,191	28.3	Amber*
Jamaica	2,961,161	30.6	Amber*
Mauritania	4,649,660	37.3	Amber*
Indonesia	273,523,621	41.9	Amber
Guatemala	17,915,567	43.2	Amber
Bahamas	393,248	43.2	Amber
Oman	5,106,622	45.2	Amber
Zambia	18,383,956	47.1	Amber
Iceland	356,991	48.2	Amber
Comoros	869,595	49.3	Amber
Japan	126,476,458	52.6	Amber

Country	Population	14-day case prevalence, per 100,000	Classification (* would be classed at lower risk level if UK quarantine restrictions were lifted)
Morocco	36,910,558	55.4	Amber
Zimbabwe	14,862,927	56.0	Amber
Guyana	786,559	58.6	Amber
Kazakhstan	18,776,707	60.9	Amber
Finland	5,517,919	62.6	Amber
El Salvador	6,486,201	66.1	Amber
Ecuador	17,643,060	66.6	Amber
Cayman Islands	65,720	67.0	Amber
St Lucia	183,629	72.4	Amber
Honduras	9,904,608	79.2	Amber
Greece	10,724,599	82.1	Amber
Maldives	540,542	86.0	Amber
Botswana	2,351,625	86.1	Amber
Peru	32,971,846	86.3	Amber
Guam	168,783	90.6	Amber
Azerbaijan	10,139,175	92.2	Amber
Malaysia	32,365,998	95.5	Amber
Libya	6,871,287	101.8	Red
Iran	83,992,953	102.3	Red
Qatar	2,881,060	104.3	Red
Kuwait	4,270,563	109.1	Red
Mexico	128,932,753	118.0	Red
Cape Verde	555,988	127.7	Red
Faroe Islands	48,865	131.0	Red
Lesotho	2,142,252	139.2	Red
Paraguay	7,132,530	145.2	Red
Dominican Republic	10,847,904	146.4	Red
Armenia	2,963,234	146.5	Red
Bulgaria	7,000,039	154.2	Red
US Virgin Islands	104,423	155.1	Red
Norway	5,328,212	158.0	Red
Bolivia	11,673,029	163.2	Red
Kosovo	1,798,506	165.4	Red
Suriname	586,634	179.2	Red
Barbados	287,371	181.6	Red
Bosnia and Herzegovina	3,280,815	184.9	Red
Belize	397,621	186.6	Red
Curacao	164,100	190.7	Red
Moldova	4,033,963	199.2	Red
Jordan	10,203,140	203.1	Red
Ukraine	43,733,759	203.4	Red
Turkey	82,003,882	217.9	Red
Bahrain	1,701,583	224.8	Red
Belgium	11,455,519	225.1	Red
North Macedonia	2,077,132	225.8	Red
Chile	19,116,209	229.5	Red
Russia	145,934,460	237.9	Red
Albania	2,862,427	245.4	Red
French Polynesia	280,904	246.0	Red

Country	Population	14-day case prevalence, per 100,000	Classification (* would be classed at lower risk level if UK quarantine restrictions were lifted)
Namibia	2,540,916	248.5	Red
Tunisia	11,818,618	260.3	Red
Eswatini	1,160,164	260.7	Red
Lebanon	6,825,442	264.5	Red
Belarus	9,449,321	268.9	Red
Hungary	9,772,756	276.1	Red
Uruguay	3,473,727	276.2	Red
Costa Rica	5,094,114	280.7	Red
Romania	19,414,458	282.5	Red
Jersey	107,796	286.7	Red
Brazil	212,559,409	304.5	Red
Palestine	5,101,416	305.5	Red
Canada	37,742,157	307.8	Red
Argentina	45,195,777	310.7	Red
United Arab Emirates	9,890,400	314.9	Red
Austria	8,858,775	319.7	Red
Germany	83,019,213	324.3	Red
France	67,012,883	329.2	Red
Poland	37,972,812	340.7	Red
Luxembourg	613,894	347.8	Red
Croatia	4,076,246	367.4	Red
South Africa	59,308,690	370.5	Red
Turks and Caicos	38,718	374.5	Red
Italy	60,359,546	379.1	Red
Sint Maarten	42,882	382.4	Red
Colombia	50,882,884	389.3	Red
Malta	493,559	426.1	Red
Georgia	3,989,175	442.1	Red
Serbia	6,963,764	446.2	Red
Puerto Rico	2,860,840	476.6	Red
Spain	46,937,060	495.1	Red
Denmark	5,806,081	506.0	Red
Switzerland	8,544,527	536.6	Red
Bonaire, Sint Eustatius and Saba	26,221	575.9	Red
Estonia	1,324,820	603.6	Red
Netherlands	17,282,163	623.3	Red
Liechtenstein	38,378	661.8	Red
Aruba	106,766	697.8	Red
Slovakia	5,450,421	751.8	Red
Monaco	33,085	767.7	Red
Sweden	10,230,185	790.1	Red
Cyprus	875,899	878.3	Red
Portugal	10,276,617	901.3	Red
Montenegro	622,182	922.1	Red
United States of America	331,002,647	988.3	Red
Lithuania	2,794,184	1,004.8	Red
Israel	8,655,541	1,052.2	Red
Panama	4,314,768	1,054.3	Red
United Kingdom	66,647,112	1,114.3	Red

Country	Population	14-day case prevalence, per 100,000	Classification (* would be classed at lower risk level if UK quarantine restrictions were lifted)
San Marino	34,453	1,137.8	Red
Slovenia	2,080,908	1,171.9	Red
Ireland	4,904,240	1,253.7	Red
Andorra	76,177	1,437.4	Red
Czech Republic	10,649,800	1,512.8	Red
Gibraltar	33,691	4,345.4	Red
Liberia	5,057,677	0.0	Not classified
Marshall Islands	59,194	0.0	Not classified
Micronesia, Fed. Sts.	113,815	0.0	Not classified
Sudan	43,849,269	0.0	Not classified
Tanzania	59,734,213	0.0	Not classified
Vatican City	809	0.0	Not classified
Western Sahara	597,330	0.0	Not classified
American Samoa	55,312	No data	Not classified
Hong Kong SAR, China	7,507,400	No data	Not classified
Kiribati	117,606	No data	Not classified
Korea, Dem. People's Rep.	25,666,161	No data	Not classified
Macao SAR, China	640,445	No data	Not classified
Nauru	12,581	No data	Not classified
Palau	18,008	No data	Not classified
Samoa	197,097	No data	Not classified
St. Martin (French part)	38,002	No data	Not classified
Tonga	104,494	No data	Not classified
Turkmenistan	5,942,089	No data	Not classified