



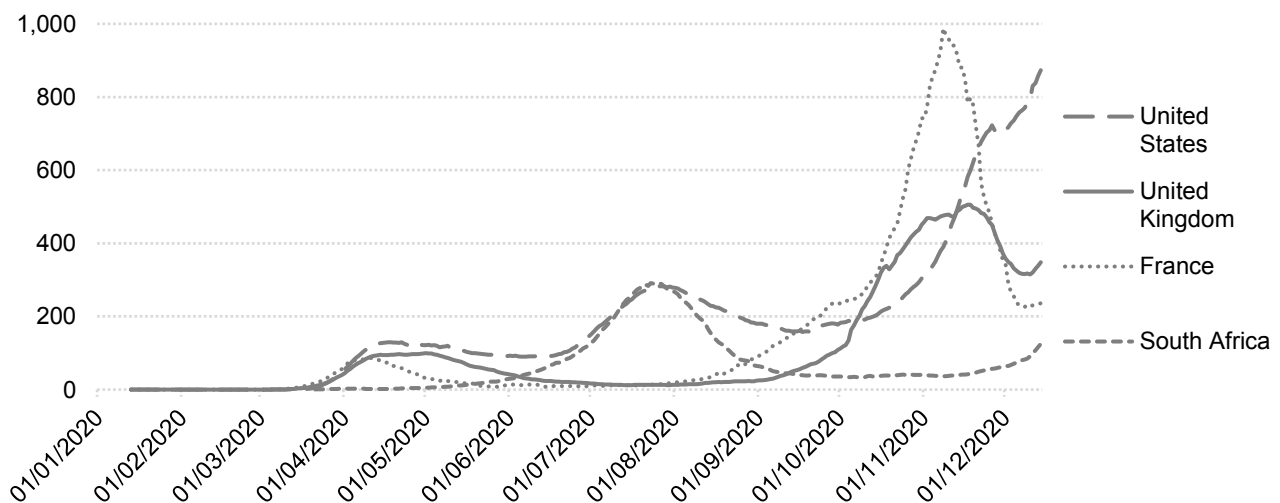
This is a regular weekly update to the classification of countries based on their current 14-day COVID-19 reported cumulative case prevalence rate published by the European Centre for Disease Prevention and Control (ECDC), and the latest quarantine status issued by the UK Government.

- GOLD:** No reported cases in last 14 days and exempt from UK quarantine
- GREEN:** 14-day reported cumulative case prevalence higher than zero but less than the medium threshold (0.04%) and exempt from UK quarantine
- AMBER:** 14-day reported cumulative case prevalence above the medium threshold (0.04%) but less than the high threshold (0.10%) or countries who are below the medium threshold but not exempt from UK quarantine
- RED:** All countries with 14-day reported cumulative case prevalence above the high threshold (0.10%)
- Not classified:** Countries not exempt from UK quarantine but with no reported cases, and countries whose data are not reported by ECDC

### Classification changes since the last update on December 9, 2020:

Solomon Islands	Green	to →	Gold
Greenland, Grenada	Gold	to →	Green
Saudi Arabia	Amber	to →	Green
Faroe Islands, Turks & Caicos, Bonaire, Sint Eustacius and Saba, Anguilla, Sri Lanka	Green	to →	Amber
Norway	Red	to →	Amber
Uruguay, South Africa, Botswana, Dominican Republic	Amber	to →	Red

### 14-day reported case prevalence rates per 100,000 population, selected countries:



This Update is produced by the St Helena Statistics Office. For full details of the methodology and data sources, please see <https://www.sainthelena.gov.sh/stats-bulletin-8-covid-19>.

Country	Population	14-day case prevalence, per 100,000	Classification (* would be classed at lower risk level if UK quarantine restrictions were lifted)
Ascension	806	0.0	Gold
Falkland Islands	3,372	0.0	Gold
Montserrat	4,991	0.0	Gold
Solomon Islands	669,823	0.0	Gold
St Helena	4,577	0.0	Gold
Tristan da Cunha	248	0.0	Gold
Vanuatu	299,882	0.0	Gold
Lao PDR	7,169,456	0.0	Green
Vietnam	96,462,108	0.1	Green
East Timor	1,293,120	0.1	Green
Cambodia	16,486,542	0.2	Green
Taiwan	23,773,881	0.3	Green
Thailand	69,625,581	0.4	Green
Fiji	889,955	0.4	Green
Brunei	433,296	0.5	Green
Australia	25,203,200	0.5	Green
Mauritius	1,269,670	1.1	Green
Isle of Man	84,589	1.2	Green
New Caledonia	282,757	1.4	Green
Greenland	56,660	1.8	Green
Singapore	5,804,343	1.8	Green
Mongolia	3,225,166	3.8	Green
Guernsey	64,468	4.7	Green
Bhutan	763,094	5.5	Green
Rwanda	12,626,938	5.9	Green
Barbados	287,021	5.9	Green
Antigua and Barbuda	97,115	7.2	Green
Saudi Arabia	34,268,529	8.1	Green
St Kitts and Nevis	52,834	9.5	Green
St Lucia	182,795	9.8	Green
British Virgin Islands	30,033	10.0	Green
Northern Mariana Islands	57,213	12.2	Green
Republic of Korea	51,225,321	18.1	Green
Grenada	112,003	25.0	Green
Japan	126,860,299	25.9	Green
Cayman Islands	64,948	37.0	Green
China	1,433,783,692	0.0	Amber*
Yemen	29,161,922	0.0	Amber*
Malawi	18,628,749	0.2	Amber*
Sierra Leone	7,813,207	0.4	Amber*
Burundi	11,530,577	0.4	Amber*
Central African Republic	4,745,179	0.5	Amber*
Chad	15,946,882	0.6	Amber*
Papua New Guinea	8,776,119	0.8	Amber*
Somalia	15,442,906	0.9	Amber*
South Sudan	11,062,114	0.9	Amber*
Benin	11,801,151	1.0	Amber*
Madagascar	26,969,306	1.1	Amber*
Guinea-Bissau	1,920,917	1.1	Amber*

Country	Population	14-day case prevalence, per 100,000	Classification (* would be classed at lower risk level if UK quarantine restrictions were lifted)
Cote d'Ivoire	25,716,554	1.4	Amber*
Nicaragua	6,545,503	1.6	Amber*
Liberia	4,937,374	1.6	Amber*
Comoros	850,891	2.0	Amber*
Gambia	2,347,696	2.0	Amber*
Congo, Democratic Republic of	86,790,568	2.1	Amber*
Equatorial Guinea	1,355,982	2.4	Amber*
Haiti	11,263,079	2.7	Amber*
Nigeria	200,963,603	2.9	Amber*
Guinea	12,771,246	3.0	Amber*
Niger	23,310,719	3.2	Amber*
Angola	31,825,299	3.4	Amber*
Togo	8,082,359	3.6	Amber*
Zambia	17,861,034	3.7	Amber*
Eritrea	3,497,117	3.8	Amber*
Cameroon	25,876,387	4.0	Amber*
Mozambique	30,366,043	4.4	Amber*
Ghana	30,417,858	4.8	Amber*
Congo	5,380,504	5.1	Amber*
Djibouti	973,557	5.2	Amber*
Burkina Faso	20,321,383	5.8	Amber*
Mali	19,658,023	5.9	Amber*
Tajikistan	9,321,023	5.9	Amber*
Egypt	100,388,076	6.0	Amber*
Senegal	16,296,362	6.1	Amber*
Gabon	2,172,578	6.4	Amber*
Ethiopia	112,078,727	6.5	Amber*
Lesotho	2,125,267	6.6	Amber*
Uzbekistan	32,981,715	6.7	Amber*
Suriname	581,363	7.1	Amber*
Syria	17,070,132	8.0	Amber*
Sudan	42,813,237	8.8	Amber*
Zimbabwe	14,645,473	8.8	Amber*
Afghanistan	38,041,757	9.0	Amber*
Sao Tome and Principe	215,048	9.3	Amber*
Trinidad and Tobago	1,394,969	15.7	Amber*
Kenya	52,573,967	16.3	Amber*
Uganda	44,269,587	16.7	Amber*
Bangladesh	163,046,173	17.3	Amber*
Venezuela	28,515,829	18.0	Amber*
Philippines	108,116,622	18.1	Amber*
Pakistan	216,565,317	19.7	Amber*
Bolivia	11,513,102	22.0	Amber*
Algeria	43,053,054	23.0	Amber*
Indonesia	270,625,567	30.9	Amber*
Eswatini	1,148,133	31.2	Amber*
India	1,366,417,756	33.1	Amber*
Jamaica	2,948,277	34.0	Amber*
Myanmar	54,045,422	34.9	Amber*

Country	Population	14-day case prevalence, per 100,000	Classification (* would be classed at lower risk level if UK quarantine restrictions were lifted)
Anguilla	14,872	40.3	Amber
Guatemala	17,581,476	41.6	Amber
Sri Lanka	21,323,734	43.6	Amber
Bahamas	389,486	45.7	Amber
Bonaire, Sint Eustatius and Saba	25,983	46.2	Amber
Mauritania	4,525,698	49.3	Amber
Iceland	356,991	49.3	Amber
Faroe Islands	48,677	53.4	Amber
El Salvador	6,453,550	53.8	Amber
Turks and Caicos	38,194	55.0	Amber
Oman	4,974,992	55.4	Amber
Nepal	28,608,715	57.5	Amber
Ecuador	17,373,657	57.5	Amber
Malaysia	31,949,789	59.4	Amber
Iraq	39,309,789	61.6	Amber
Honduras	9,746,115	66.4	Amber
Kazakhstan	18,551,428	67.2	Amber
Peru	32,510,462	69.0	Amber
Guyana	782,775	69.5	Amber
Maldives	530,957	70.4	Amber
Kyrgyzstan	6,415,851	75.9	Amber
Ireland	4,904,240	80.4	Amber
Qatar	2,832,071	81.7	Amber
Namibia	2,494,524	87.8	Amber
Kuwait	4,207,077	90.1	Amber
Norway	5,328,212	99.0	Amber
Dominican Republic	10,738,957	104.5	Red
Botswana	2,303,703	108.9	Red
Finland	5,517,919	112.0	Red
Mexico	127,575,529	112.1	Red
Chile	18,952,035	113.4	Red
Uruguay	3,461,731	115.3	Red
Libya	6,777,453	123.2	Red
South Africa	58,558,267	125.1	Red
Morocco	36,471,766	125.6	Red
Tunisia	11,694,721	129.2	Red
Bahrain	1,641,164	143.6	Red
Cape Verde	549,936	151.1	Red
Paraguay	7,044,639	165.7	Red
Guam	167,295	172.2	Red
United Arab Emirates	9,770,526	176.0	Red
Argentina	44,780,675	177.2	Red
Gibraltar	33,706	181.0	Red
Monaco	33,085	181.4	Red
Greece	10,724,599	189.3	Red
Iran	82,913,893	192.4	Red
Aruba	106,310	198.5	Red
Spain	46,937,060	218.1	Red
Colombia	50,339,443	233.2	Red

Country	Population	14-day case prevalence, per 100,000	Classification (* would be classed at lower risk level if UK quarantine restrictions were lifted)
France	67,012,883	236.3	Red
Canada	37,411,038	241.8	Red
US Virgin Islands	104,579	251.5	Red
Israel	8,519,373	256.8	Red
Russia	145,872,260	263.7	Red
Belarus	9,452,409	267.5	Red
Belgium	11,455,519	268.2	Red
Malta	493,559	273.3	Red
Costa Rica	5,047,561	274.5	Red
Brazil	211,049,519	278.2	Red
Lebanon	6,855,709	285.5	Red
Germany	83,019,213	341.1	Red
United Kingdom	66,647,112	348.2	Red
Albania	2,862,427	381.0	Red
Sint Maarten	42,389	391.6	Red
Poland	37,972,812	396.6	Red
Ukraine	43,993,643	404.6	Red
Bosnia and Herzegovina	3,300,998	416.3	Red
Kosovo	1,798,506	418.3	Red
Italy	60,359,546	428.3	Red
Romania	19,414,458	436.8	Red
Jordan	10,101,697	448.5	Red
Estonia	1,324,820	453.1	Red
Armenia	2,957,728	458.4	Red
Austria	8,858,775	472.5	Red
Moldova	4,043,258	482.3	Red
Turkey	82,003,882	499.2	Red
Slovakia	5,450,421	500.0	Red
Denmark	5,806,081	523.7	Red
Portugal	10,276,617	524.9	Red
Bulgaria	7,000,039	528.0	Red
Cyprus	875,899	538.6	Red
French Polynesia	279,285	545.0	Red
Netherlands	17,282,163	546.7	Red
Palestine	4,981,422	559.5	Red
Puerto Rico	2,933,404	564.6	Red
Azerbaijan	10,047,719	574.1	Red
Czech Republic	10,649,800	576.1	Red
North Macedonia	2,077,132	582.3	Red
Liechtenstein	38,378	628.0	Red
Switzerland	8,544,527	647.3	Red
Panama	4,246,440	665.9	Red
Hungary	9,772,756	683.0	Red
Sweden	10,230,185	738.8	Red
Curacao	163,423	771.0	Red
Jersey	107,796	789.5	Red
Andorra	76,177	821.8	Red
United States of America	329,064,917	873.2	Red
Belize	390,351	910.0	Red

<b>Country</b>	<b>Population</b>	<b>14-day case prevalence, per 100,000</b>	<b>Classification</b> (* would be classed at lower risk level if UK quarantine restrictions were lifted)
Slovenia	2,080,908	1,006.0	Red
San Marino	34,453	1,047.8	Red
Montenegro	622,182	1,051.9	Red
Luxembourg	613,894	1,189.0	Red
Lithuania	2,794,184	1,205.9	Red
Croatia	4,076,246	1,208.8	Red
Georgia	3,996,762	1,388.1	Red
Serbia	6,963,764	1,396.1	Red
Marshall Islands	58,791	0.0	Not classified
Tanzania	58,005,461	0.0	Not classified
Vatican City	815	0.0	Not classified
Western Sahara	582,458	0.0	Not classified
American Samoa	55,312	No data	Not classified
Hong Kong SAR, China	7,507,400	No data	Not classified
Kiribati	117,606	No data	Not classified
Korea, Dem. People's Rep.	25,666,161	No data	Not classified
Macao SAR, China	640,445	No data	Not classified
Micronesia, Fed. Sts.	113,815	No data	Not classified
Nauru	12,581	No data	Not classified
Palau	18,008	No data	Not classified
Samoa	197,097	No data	Not classified
St. Martin (French part)	38,002	No data	Not classified
Tonga	104,494	No data	Not classified
Turkmenistan	5,942,089	No data	Not classified