



This is a regular weekly update to the classification of countries based on their current 14-day COVID-19 reported cumulative case prevalence rate published by the European Centre for Disease Prevention and Control (ECDC), and the latest quarantine status issued by the UK Government.

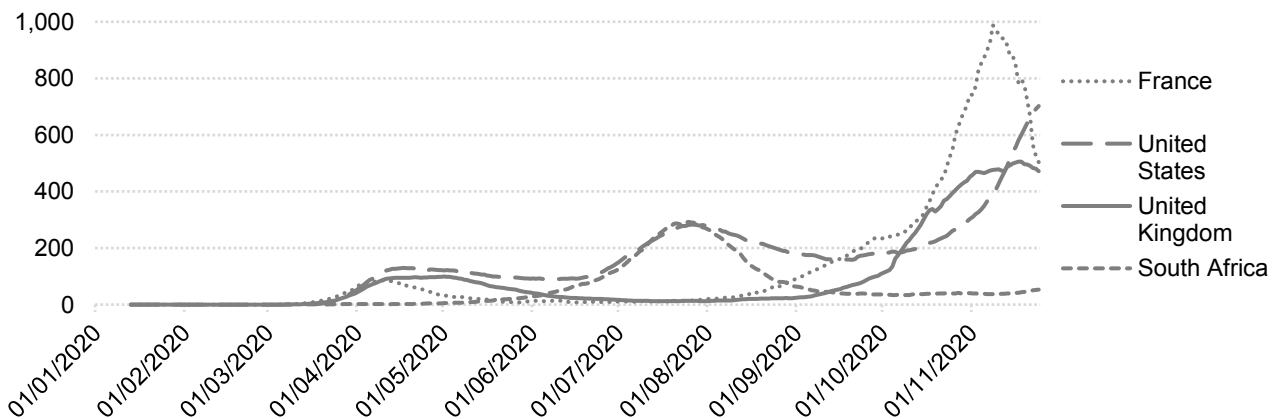
- GOLD:** No reported cases in last 14 days and exempt from UK quarantine
- GREEN:** 14-day reported cumulative case prevalence higher than zero but less than the medium threshold (0.04%) and exempt from UK quarantine
- AMBER:** 14-day reported cumulative case prevalence above the medium threshold (0.04%) but less than the high threshold (0.10%) or countries who are below the medium threshold but not exempt from UK quarantine
- RED:** All countries with 14-day reported cumulative case prevalence above the high threshold (0.10%)
- Not classified:** Countries not exempt from UK quarantine but with no reported cases, and countries whose data are not reported by ECDC

Classification changes since the last update on November 17, 2020:

Anguilla, St Kitts and Nevis	Gold	to →	Green
Cambodia, Rwanda, Northern Mariana Islands, Bonaire, Sint Eustatius and Saba, Namibia, Uruguay, Sri Lanka	Amber	to →	Green
Lao PDR	Not classified	to →	Green
Botswana, Iraq, Kyrgystan, Nepal	Red	to →	Amber
Marshall Islands, Vanuatu	Not classified	to →	Amber
Turks and Caicos	Amber	to →	Red

* Note: During the week 10-17 November two cases have been reported on the Falkland Islands and one case on Ascension. However these were identified during mandatory arrival quarantine procedures, and so their community case prevalence rates remains zero and their classification remains 'Gold'.

14-day reported case prevalence rates per 100,000 population, selected countries:



This Update is produced by the St Helena Statistics Office. For full details of the methodology and data sources, please see <https://www.sainthelena.gov.sh/stats-bulletin-8-covid-19>.

Country	ECDC country code	Population	14-day case prevalence, per 100,000	Classification (* would be classed at lower risk level if UK quarantine restrictions were lifted)
Ascension	ASC	806	0.0	Gold
British Virgin Islands	VGB	30,033	0.0	Gold
Brunei	BRN	433,296	0.0	Gold
Falkland Islands	FLK	3,372	0.0	Gold
Montserrat	MSF	4,991	0.0	Gold
St Helena	SHN	4,577	0.0	Gold
Tristan da Cunha	TDC	248	0.0	Gold
Cambodia	KHM	16,486,542	0.0	Green
Vietnam	VNM	96,462,108	0.1	Green
Thailand	THA	69,625,581	0.1	Green
Fiji	FJI	889,955	0.1	Green
Taiwan	CNG1925	23,773,881	0.2	Green
Lao PDR	LAO	7,169,456	0.2	Green
Australia	AUS	25,203,200	0.7	Green
New Caledonia	NCL	282,757	1.1	Green
Singapore	SGP	5,804,343	1.7	Green
Greenland	GRL	56,660	1.8	Green
St Kitts and Nevis	KNA	52,834	1.9	Green
Mauritius	MUS	1,269,670	3.3	Green
Rwanda	RWA	12,626,938	3.8	Green
Barbados	BRB	287,021	5.9	Green
Faroe Islands	FRO	48,677	6.2	Green
Guernsey	GGY	64,468	6.2	Green
Anguilla	AIA	14,872	6.7	Green
Northern Mariana Islands	MNP	57,213	7.0	Green
Republic of Korea	KOR	51,225,321	7.2	Green
Grenada	GRD	112,003	8.0	Green
Antigua and Barbuda	ATG	97,115	8.2	Green
Isle of Man	IMN	84,589	14.2	Green
Japan	JPN	126,860,299	19.7	Green
Cayman Islands	CYM	64,948	23.1	Green
Namibia	NAM	2,494,524	26.3	Green
Bonaire, Sint Eustatius and Saba	BES	25,983	26.9	Green
Sri Lanka	LKA	21,323,734	29.2	Green
Uruguay	URY	3,461,731	34.8	Green
China	CHN	1,433,783,692	0.0	Amber*
Papua New Guinea	PNG	8,776,119	0.1	Amber*
Yemen	YEM	29,161,922	0.1	Amber*
Sierra Leone	SLE	7,813,207	0.3	Amber*
Malawi	MWI	18,628,749	0.3	Amber*
Vanuatu	VUT	299,882	0.3	Amber*
Guinea-Bissau	GNB	1,920,917	0.4	Amber*
Burundi	BDI	11,530,577	0.4	Amber*
Madagascar	MDG	26,969,306	0.4	Amber*
Solomon Islands	SLB	669,823	0.4	Amber*
Niger	NER	23,310,719	0.6	Amber*
Chad	TCD	15,946,882	0.6	Amber*
Central African Republic	CAF	4,745,179	0.7	Amber*
Congo, Democratic Republic of	COD	86,790,568	0.8	Amber*

Country	ECDC country code	Population	14-day case prevalence, per 100,000	Classification (* would be classed at lower risk level if UK quarantine restrictions were lifted)
Haiti	HTI	11,263,079	0.8	Amber*
South Sudan	SSD	11,062,114	0.8	Amber*
Burkina Faso	BFA	20,321,383	0.9	Amber*
Somalia	SOM	15,442,906	0.9	Amber*
Nigeria	NGA	200,963,603	1.1	Amber*
Senegal	SEN	16,296,362	1.1	Amber*
Cote d'Ivoire	CIV	25,716,554	1.2	Amber*
Benin	BEN	11,801,151	1.4	Amber*
Gambia	GMB	2,347,696	1.8	Amber*
Eritrea	ERI	3,497,117	1.9	Amber*
Liberia	LBR	4,937,374	2.0	Amber*
Nicaragua	NIC	6,545,503	2.0	Amber*
Zambia	ZMB	17,861,034	2.7	Amber*
Mali	MLI	19,658,023	2.8	Amber*
Bhutan	BTN	763,094	2.9	Amber*
Guinea	GIN	12,771,246	3.2	Amber*
Equatorial Guinea	GNQ	1,355,982	3.3	Amber*
Comoros	COM	850,891	3.9	Amber*
Egypt	EGY	100,388,076	3.9	Amber*
Togo	TGO	8,082,359	4.1	Amber*
Djibouti	DJI	973,557	4.2	Amber*
Mozambique	MOZ	30,366,043	4.2	Amber*
Cameroon	CMR	25,876,387	4.3	Amber*
Congo	COG	5,380,504	4.7	Amber*
Sudan	SDN	42,813,237	4.7	Amber*
Zimbabwe	ZWE	14,645,473	5.1	Amber*
Marshall Islands	MHL	58,791	5.1	Amber*
Ethiopia	ETH	112,078,727	5.6	Amber*
Gabon	GAB	2,172,578	5.6	Amber*
Lesotho	LSO	2,125,267	5.6	Amber*
Ghana	GHA	30,417,858	5.7	Amber*
Syria	SYR	17,070,132	5.9	Amber*
Tajikistan	TJK	9,321,023	6.0	Amber*
Angola	AGO	31,825,299	6.5	Amber*
Afghanistan	AFG	38,041,757	6.7	Amber*
Mauritania	MRT	4,525,698	6.8	Amber*
Uganda	UGA	44,269,587	8.1	Amber*
Uzbekistan	UZB	32,981,715	8.6	Amber*
Sao Tome and Principe	STP	215,048	8.8	Amber*
Mongolia	MNG	3,225,166	9.4	Amber*
Suriname	SUR	581,363	9.6	Amber*
Bolivia	BOL	11,513,102	12.3	Amber*
Saudi Arabia	SAU	34,268,529	13.1	Amber*
Pakistan	PAK	216,565,317	15.4	Amber*
Bangladesh	BGD	163,046,173	17.1	Amber*
Venezuela	VEN	28,515,829	18.4	Amber*
Eswatini	SWZ	1,148,133	19.2	Amber*
Philippines	PHL	108,116,622	20.5	Amber*
Indonesia	IDN	270,625,567	22.7	Amber*

Country	ECDC country code	Population	14-day case prevalence, per 100,000	Classification (* would be classed at lower risk level if UK quarantine restrictions were lifted)
Jamaica	JAM	2,948,277	27.2	Amber*
Kenya	KEN	52,573,967	27.7	Amber*
Algeria	DZA	43,053,054	30.6	Amber*
Myanmar	MMR	54,045,422	34.3	Amber*
Guatemala	GTM	17,581,476	41.9	Amber
El Salvador	SLV	6,453,550	42.4	Amber
India	IND	1,366,417,756	42.9	Amber
Honduras	HND	9,746,115	44.6	Amber
St Lucia	LCA	182,795	44.9	Amber
Trinidad and Tobago	TTO	1,394,969	44.9	Amber
Malaysia	MYS	31,949,789	48.4	Amber
Iceland	ISL	356,991	52.7	Amber
South Africa	ZAF	58,558,267	53.3	Amber
Mexico	MEX	127,575,529	60.0	Amber
Ecuador	ECU	17,373,657	61.4	Amber
Turkey	TUR	82,003,882	69.1	Amber
Finland	FIN	5,517,919	73.4	Amber
Kazakhstan	KAZ	18,551,428	75.4	Amber
Botswana	BWA	2,303,703	76.4	Amber
Dominican Republic	DOM	10,738,957	76.6	Amber
Oman	OMN	4,974,992	77.4	Amber
Guyana	GUY	782,775	77.8	Amber
Peru	PER	32,510,462	83.1	Amber
Nepal	NPL	28,608,715	88.3	Amber
Iraq	IRQ	39,309,789	90.9	Amber
US Virgin Islands	VIR	104,579	97.5	Amber
Kyrgyzstan	KGZ	6,415,851	99.8	Amber
Chile	CHL	18,952,035	101.3	Red
Turks and Caicos	TCA	38,194	102.1	Red
Ireland	IRL	4,904,240	103.0	Red
Qatar	QAT	2,832,071	105.3	Red
Bahamas	BHS	389,486	110.1	Red
Israel	ISR	8,519,373	119.1	Red
Aruba	ABW	106,310	123.2	Red
Paraguay	PRY	7,044,639	129.5	Red
Bahrain	BHR	1,641,164	137.3	Red
Libya	LBY	6,777,453	139.2	Red
Maldives	MDV	530,957	141.1	Red
Tunisia	TUN	11,694,721	150.7	Red
Norway	NOR	5,328,212	150.9	Red
Jersey	JEY	107,796	151.2	Red
Cape Verde	CPV	549,936	160.6	Red
United Arab Emirates	ARE	9,770,526	171.6	Red
Canada	CAN	37,411,038	184.0	Red
Morocco	MAR	36,471,766	185.3	Red
Kuwait	KWT	4,207,077	188.1	Red
Belarus	BLR	9,452,409	192.8	Red
Brazil	BRA	211,049,519	195.5	Red
Iran	IRN	82,913,893	209.7	Red

Country	ECDC country code	Population	14-day case prevalence, per 100,000	Classification (* would be classed at lower risk level if UK quarantine restrictions were lifted)
Colombia	COL	50,339,443	210.4	Red
Russia	RUS	145,872,260	234.9	Red
Belize	BLZ	390,351	261.0	Red
Malta	MLT	493,559	266.8	Red
Denmark	DNK	5,806,081	271.5	Red
Argentina	ARG	44,780,675	276.6	Red
Estonia	EST	1,324,820	279.7	Red
Monaco	MCO	33,085	281.1	Red
Sint Maarten	SXM	42,389	285.5	Red
Azerbaijan	AZE	10,047,719	291.0	Red
Costa Rica	CRI	5,047,561	291.4	Red
Palestine	PSE	4,981,422	302.1	Red
Germany	DEU	83,019,213	307.7	Red
Albania	ALB	2,862,427	308.3	Red
Lebanon	LBN	6,855,709	323.3	Red
Greece	GRC	10,724,599	324.7	Red
Cyprus	CYP	875,899	325.3	Red
Panama	PAN	4,246,440	360.9	Red
Slovakia	SVK	5,450,421	374.3	Red
Ukraine	UKR	43,993,643	378.9	Red
Moldova	MDA	4,043,258	389.3	Red
Curacao	CUW	163,423	410.6	Red
Spain	ESP	46,937,060	429.1	Red
Netherlands	NLD	17,282,163	433.8	Red
Puerto Rico	PRI	2,933,404	453.4	Red
United Kingdom	GBR	66,647,112	471.3	Red
Belgium	BEL	11,455,519	475.7	Red
Gibraltar	GIB	33,706	480.6	Red
France	FRA	67,012,883	503.2	Red
Bosnia and Herzegovina	BIH	3,300,998	519.1	Red
Kosovo	XKX	1,798,506	564.2	Red
Sweden	SWE	10,230,185	577.3	Red
Romania	ROU	19,414,458	596.8	Red
Armenia	ARM	2,957,728	636.8	Red
Hungary	HUN	9,772,756	644.3	Red
Bulgaria	BGR	7,000,039	657.0	Red
United States of America	USA	329,064,917	702.1	Red
Czech Republic	CZE	10,649,800	711.4	Red
North Macedonia	MKD	2,077,132	715.0	Red
Jordan	JOR	10,101,697	726.8	Red
Italy	ITA	60,359,546	781.0	Red
Portugal	PRT	10,276,617	791.9	Red
Lithuania	LTU	2,794,184	804.2	Red
Poland	POL	37,972,812	811.6	Red
Guam	GUM	167,295	818.3	Red
Switzerland	CHE	8,544,527	828.2	Red
Serbia	SRB	6,963,764	892.1	Red
Croatia	HRV	4,076,246	905.6	Red
San Marino	SMR	34,453	911.4	Red

Country	ECDC country code	Population	14-day case prevalence, per 100,000	Classification (* would be classed at lower risk level if UK quarantine restrictions were lifted)
Liechtenstein	LIE	38,378	948.5	Red
Slovenia	SVN	2,080,908	968.5	Red
Austria	AUT	8,858,775	1,027.3	Red
French Polynesia	PYF	279,285	1,068.1	Red
Andorra	AND	76,177	1,138.1	Red
Georgia	GEO	3,996,762	1,205.2	Red
Luxembourg	LUX	613,894	1,284.3	Red
Montenegro	MNE	622,182	1,287.4	Red
East Timor	TLS	1,293,120	0.0	Not classified
Tanzania	TZA	58,005,461	0.0	Not classified
Vatican City	VAT	815	0.0	Not classified
Western Sahara	ESH	582,458	0.0	Not classified
American Samoa	ASM	55,312	No data	Not classified
Hong Kong SAR, China	HKG	7,507,400	No data	Not classified
Kiribati	KIR	117,606	No data	Not classified
Korea, Dem. People's Rep.	PRK	25,666,161	No data	Not classified
Macao SAR, China	MAC	640,445	No data	Not classified
Micronesia, Fed. Sts.	FSM	113,815	No data	Not classified
Nauru	NRU	12,581	No data	Not classified
Palau	PLW	18,008	No data	Not classified
Samoa	WSM	197,097	No data	Not classified
St. Martin (French part)	MAF	38,002	No data	Not classified
Tonga	TON	104,494	No data	Not classified
Turkmenistan	TKM	5,942,089	No data	Not classified