

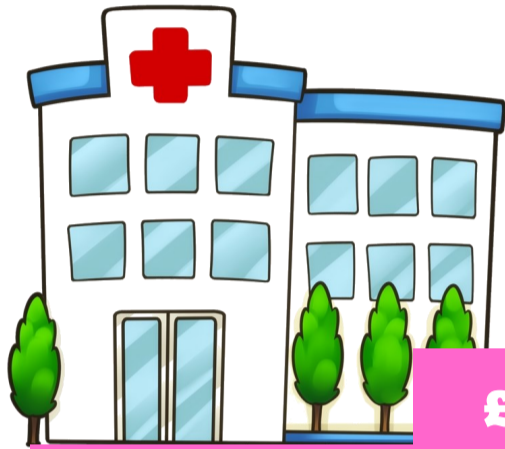
COVID-19 RELATED ACTIVITIES

Expenditure March– July 2020

Equipment, Supplies & Services

£125,000

- Medical equipment including for Ventilators
- Flu pod for the Jamestown Hospital
- Personal Protective Equipment
- Medical Supplies
- Media Support and Advertising



£302,000

Business Support

£225,000

- Enforced Self-Isolation Support
 - 24 businesses were supported and 42 employees
- Hardship Support
 - 46 businesses were supported and 62 employees
- Business Closure Support
 - Six businesses were supported and 19 employees



Access

- One Repatriation Flight from the UK to St Helena return
- One Repatriation Flight from South Africa to St Helena return
- One UK Charter Flight (July 2020) return



£678,000

Health Technical Resources and Support Staff

Additional Health staff are being covered for Six months by the UK Government and these posts include:

- Biomedical Scientist
- Anaesthetist
- Physiotherapist
- General Doctor
- Five General Nurses
- One ITU Nurse

Additional Support Staff for Health funded from this budget included:

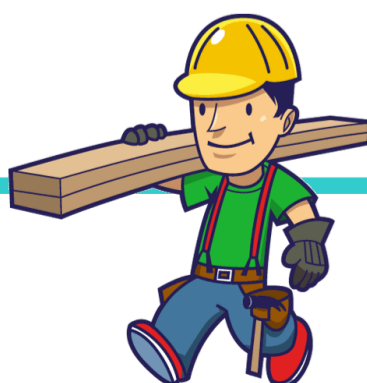
- Project Manager
- Public Health Support Officer



£45,000

Bradley's Camp Refurbishment and Construction

- 10 Bed Intensive Treatment Unit
- Hospital block
- Clinical Staff Accommodation
- 16 Room Isolation Unit
- 39 Room Quarantine Unit
- Refurbishment of Support Buildings
- Electricity, water, drainage, sewerage, road and fence infrastructure.



Bradleys Camp Operational Costs

- Salary and wages
- Security
- Catering for three meals per day
- PPE
- Cleaning products and materials
- Telecommunications
- Utilities
- General operating costs (operating costs even while the facility is not occupied)



£147,000

