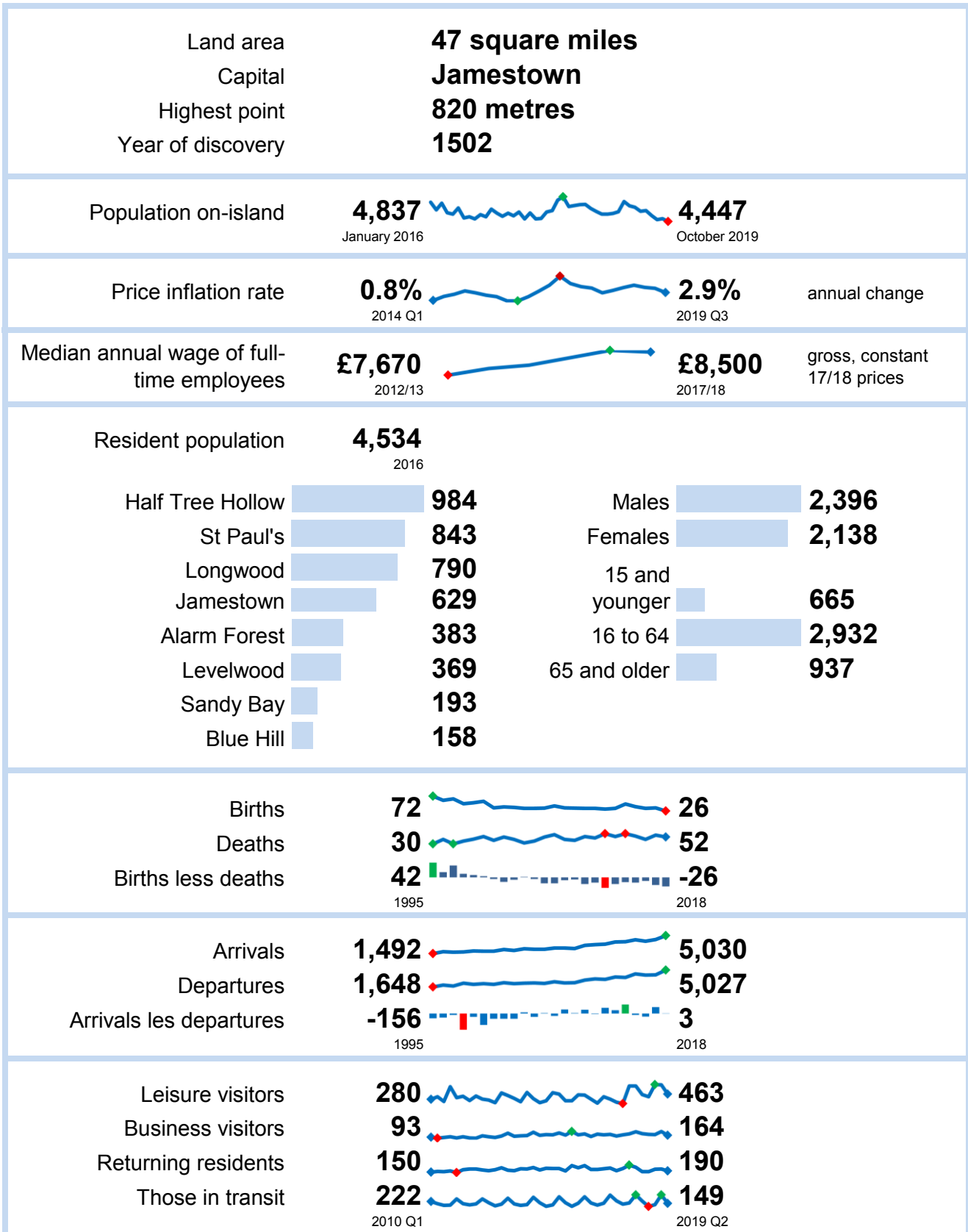




# St Helena in Figures

Printed on 4/12/2019





# St Helena in Figures

Printed on 4/12/2019

Gross Domestic Product	<b>£44.2</b>		<b>£42.4</b>	millions, constant 17/18 prices
Gross National Income per capita	<b>£8,390</b>		<b>£8,860</b>	constant 17/18 prices
	2014/15		2017/18	

Total imports		<b>£19.34</b> millions	
		2018/19	
	From:		
Food		<b>21.7%</b>	South Africa
Machinery and transport		<b>21.3%</b>	UK
Other manufactures		<b>15.7%</b>	Other
Mineral fuels and lubricants		<b>12.3%</b>	By:
Other chemicals etc.		<b>11.5%</b>	Commercial
Manufactured goods		<b>10.0%</b>	Government
Beverages and tobacco		<b>5.2%</b>	Personal
Inedible crude materials		<b>1.7%</b>	Airport
Animal and vegetable oils		<b>0.5%</b>	Not known

Students with 5 "C" and above passes	<b>6.5%</b>		<b>45.0%</b>	GCSE-equivalent
	1997		2017	

Children enrolled in school	<b>572</b>	
	September 2018	
Year 13		<b>10</b>
Year 12		<b>11</b>
Year 11		<b>28</b>
Year 10		<b>37</b>
Year 9		<b>42</b>
Year 8		<b>47</b>
Year 7		<b>39</b>
Year 6		<b>45</b>
Year 5		<b>45</b>
Year 4		<b>44</b>
Year 3		<b>42</b>
Year 2		<b>41</b>
Year 1		<b>46</b>
Reception		<b>51</b>
Nursery		<b>44</b>
		<b>22</b> Post-compulsory
		<b>193</b> Secondary
		<b>263</b> Primary
		<b>95</b> Pre-primary