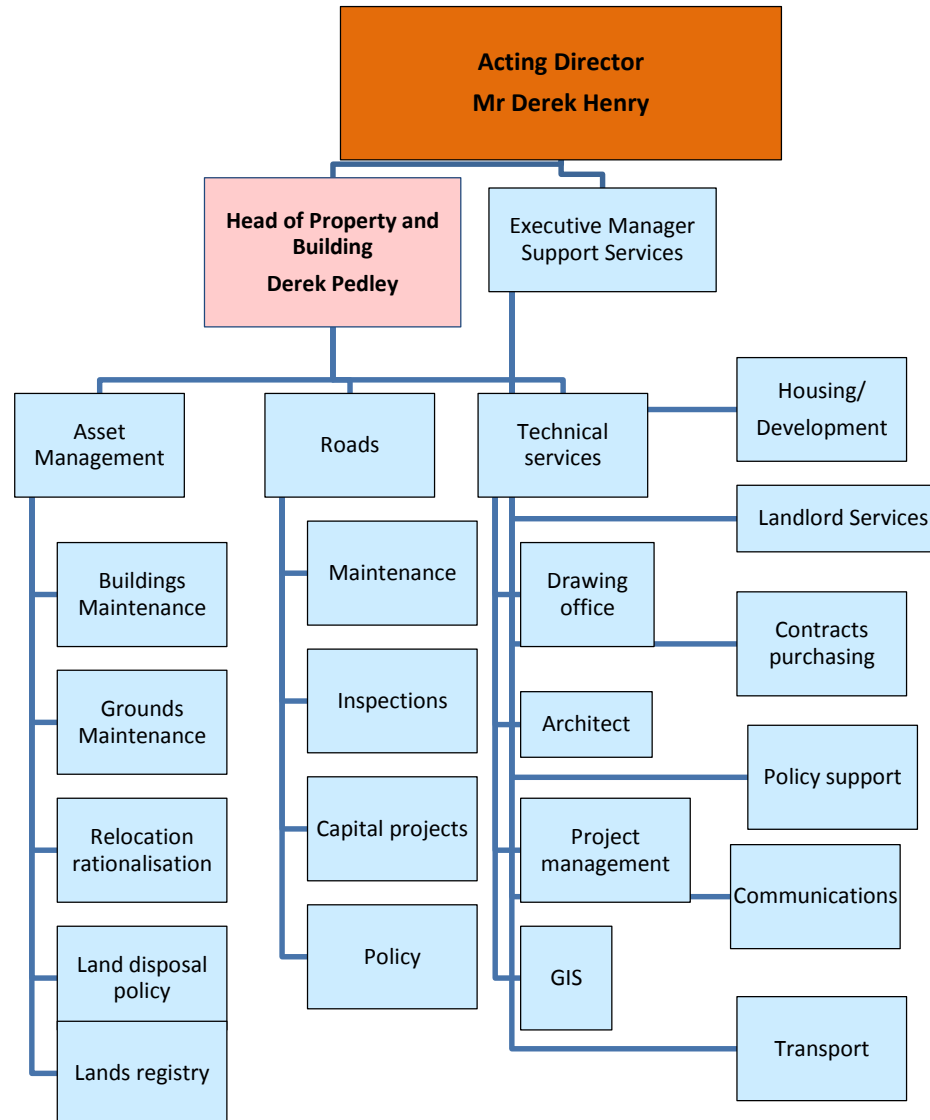
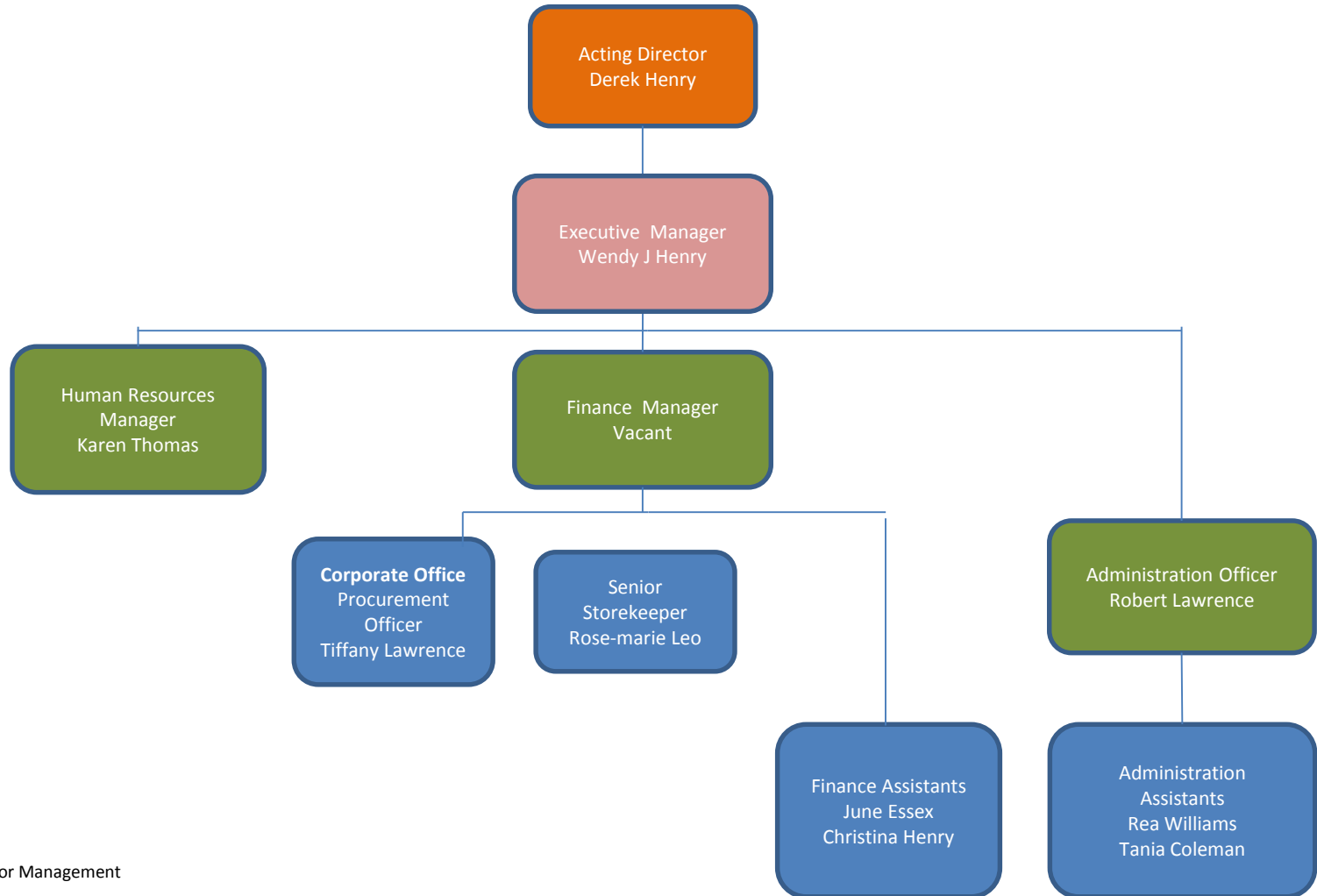


Infrastructure and Transport Directorate Organogram

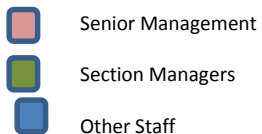
MISSION: *St. Helena's natural and built assets are managed and maintained in a sustainable manner to provide for the needs of the Island now and in the future. Promote the development of our natural and built environment ensuring that it remains central to a vibrant tourism economy*



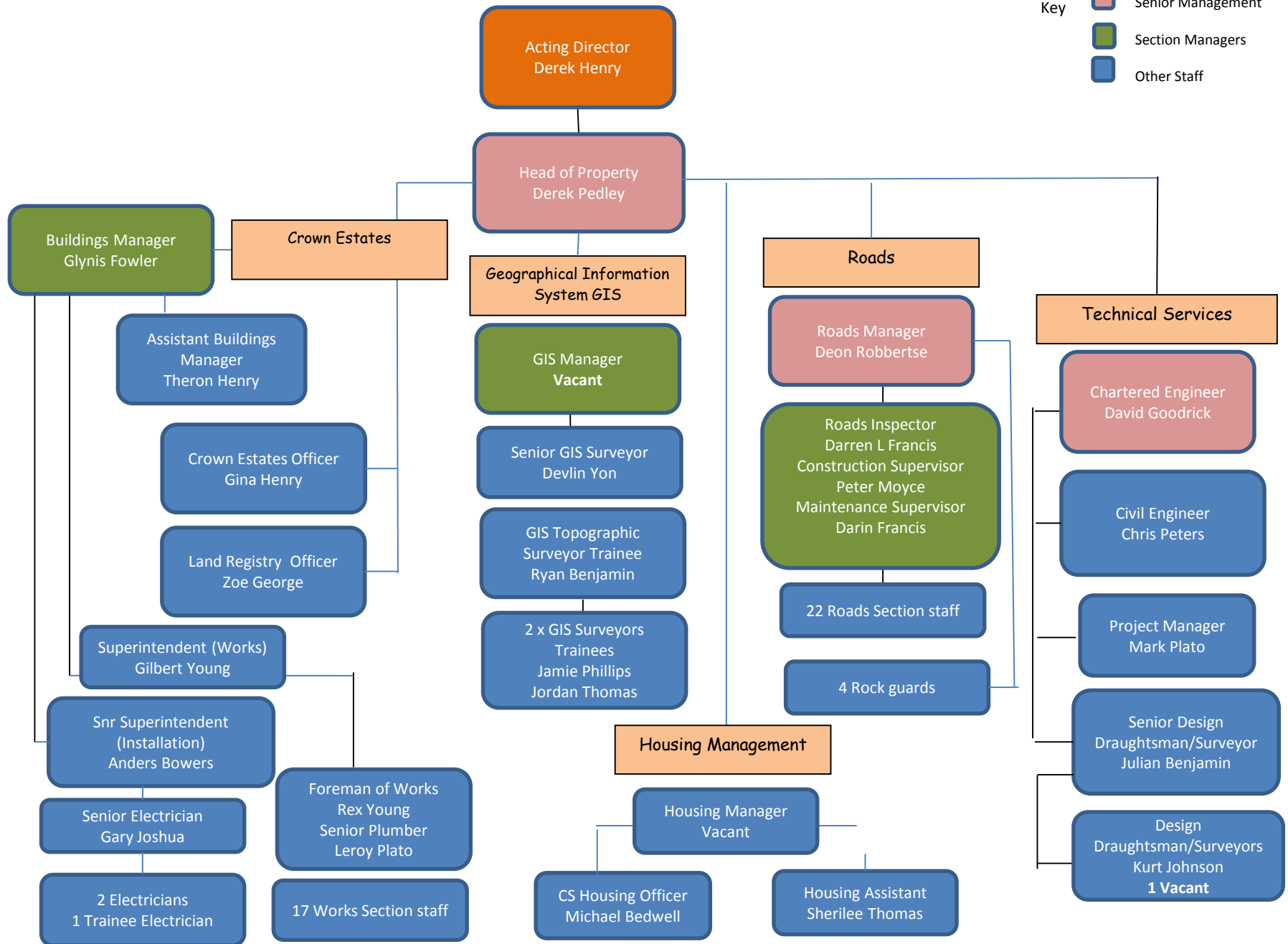
Support Services



Key



PROPERTY DIVISION



Transport Division

