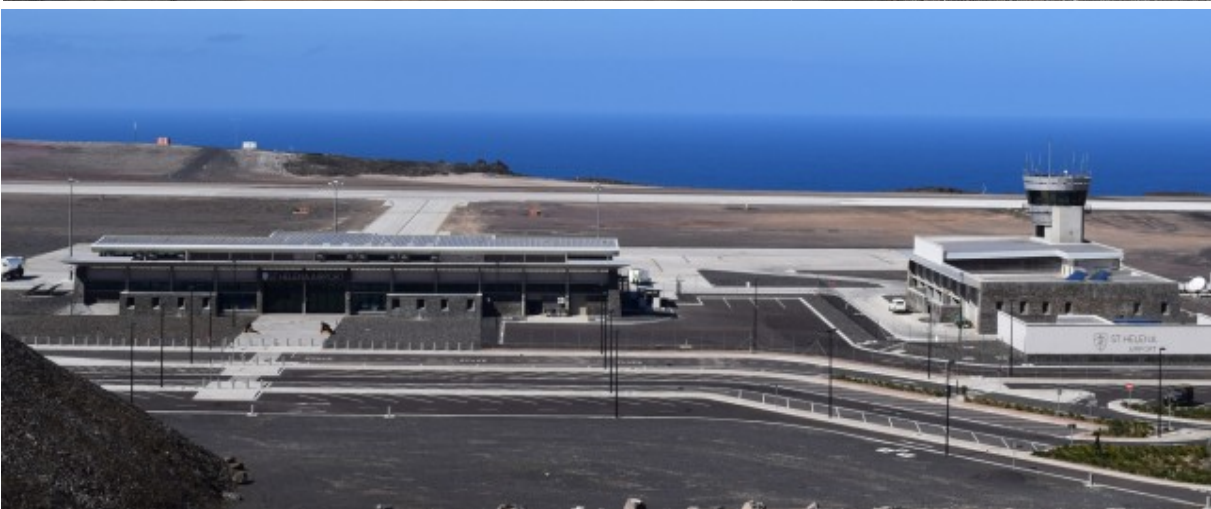


Issue No. 89
2 November 2017
SHG Press Office

St Helena Airport

Special Edition: 6th Anniversary of the Signing of the DBO Contract



AIRPORT PROJECT INFORMATION LINE - Tel: 24026

Contact Details

St Helena Government
Airport Directorate
Tel: +290 22494

Email:

access.officemanager@sainthelena.gov.sh

Halcrow
Project Management Unit
Tel: +290 24258

Email: Miles.Leask@ch2m.com

Basil Read
Contractor
Tel: +290 24026

Email: pr@brshap.co.za

Visit us online at www.sainthelenaaccess.com and on Facebook

www.facebook.com/StHelenaGovt

Copyright for the content of this newsletter and website belongs to SHG and may only be copied, duplicated or reproduced with prior permission.

Milestones Over the Past Year (2017)

February: Airport Directorate Training - The Aviation Industry by Simon Walker

April: Operations Section staff exposure visits to Jersey and London City Airports and Airport Management Course in Atlanta, USA



April: St Helena Airport granted an open-ended Aerodrome Certificate by Air Safety Support International

May: Historical arrival of Charter Flight - An Avro RJ85 aircraft arrived at St Helena Airport bringing 60 passengers who were affected by the cancellation of RMS voyages

May: First year of operations at St Helena Airport

- ⇒ **38 Flights in Total**
- ⇒ **13 Types of Aircraft**
- ⇒ **370 Inbound Passengers**
- ⇒ **323 Outbound Passengers**

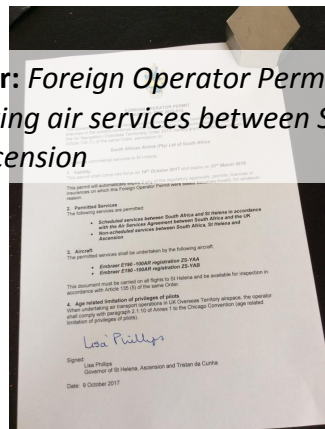
July: SHG and SA Airlink signed an agreement to provide scheduled commercial air services to St Helena Island and a charter service to Ascension Island



August: Arrival of Airlink Proving Flight – Embraer E190 aircraft



October: Foreign Operator Permit (FOP) signed permitting air services between South Africa, St Helena and Ascension



October: Airlink Inaugural Flight - Embraer E190 aircraft



October: St Helena Airport issued an open-ended Air Traffic Service Certification by ASSI

Inaugural Flight: Behind the Scenes

Open-ended Air Traffic Service Certification

During the arrival/departure of the Inaugural Flight on 14/15 October and the arrival on 21 October, an important activity took place at St Helena Airport. The new Air Traffic Controllers (ATC), Bramwell and Bernard, undertook their competency assessment and were certified by the ASSI ATS (Air Traffic Service) Inspector which has resulted in the Airport being awarded an open-ended Air Traffic Service Certification which implies that ASSI will audit routinely as required.



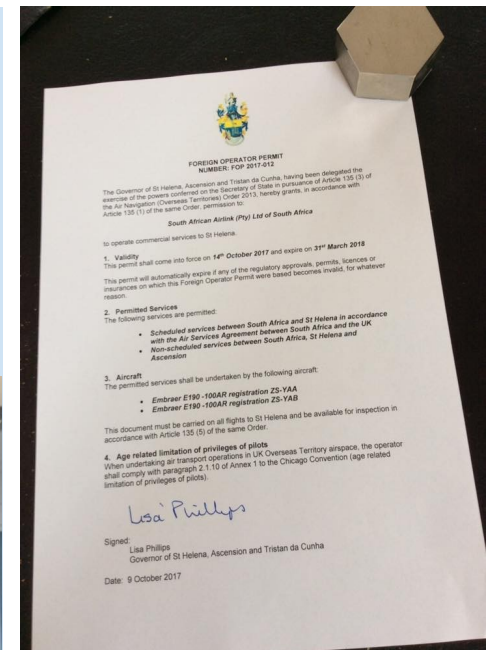
Bramwell, Senior ATC: "The weather couldn't have been better. It was perfect for the Inaugural Flight. The wind speed was below 20 knots. All our equipment was serviceable. Coordination for the inbound flight was done through Johannesburg Oceanic sector. It was an honour to be part of history."

Weather Forecasting

Dr Timothy Baker, Senior Operational Meteorologist:

"Forecasting for the flight started in earnest the day before with a detailed forecast sent to the air crews detailing the expected wind, weather and visibility at the time of arrival. Longer range models had showed positive signs during the week, and thankfully, things were still looking okay for the arrival time, with lighter than average winds and a break in the foggy showers forecast. "Flight days themselves start at 4am for the Met team. The TAF (terminal aerodrome forecast – a coded forecast for the Airport) is issued for the air crew's pre-flight planning. Things were still looking good as the detailed forecast was updated, overnight model runs and observations adding confidence to the forecast. From here on, it was a case of watching and waiting. As more data and observations came in things began to relax a little with conditions looking cloudy but generally fine, so finally we could relax a little! It was great to see a nice smooth landing and exciting to be involved in the beginning of a new era for this wonderful Island!"

FOP was sent to the Governor for final sign-off. A signed copy was sent to Airlink and they were advised to liaise with the Airport on practical planning for each flight.



Foreign Operator Permit

All aircraft registered outside of the UK and St Helena where flights are not private or military must apply for a Foreign Operator Permit (FOP), in order to operate to and from St Helena Airport. In September, the Airport Directorate was in dialogue with Airlink in order to obtain documentation for processing the FOP to operate Commercial Services to St Helena. This process was led by local trained Saint officers in parallel with the St Helena Airport Prior Permission process. Documents were checked and the



A Look Back: The Last Basil Read Charter

With the scheduled air service to St Helena having commenced on 14 October, the monthly company chartered aircraft visited St Helena on 6 September for what might be, in this arranged service, the final charter for Basil Read. The Challenger 300, registration ZS-ACT, operated by ExecuJet Africa, has been flying to the Island since 10 April 2016. This was the first jet to land on our, then, new runway, bringing our regulating personnel to carry out Airport Certification audits. The flights have enabled an effective Airport Operation to continue alongside the completion stages of the project Phase One, Design and Build. In addition to the changeover of staff, there have been occasions where

critical spares, medical supplies and other crucial items in short supply on-Island were placed on the flight as well. During these charter operations, the visiting aircraft and its crew have provided invaluable experience for the Airport Operational Staff and contributed immensely in providing flight data information to the ATC and Met divisions.



A Look Ahead: Alan Shaw & Gwyneth Howell

Gwyneth Howell, Accountable Manager: "Aviation is a new industry to St Helena opening up many opportunities for the Business/Private/Government sectors which needs to be embraced by all, as this global industry opens up invaluable markets, connecting people, cultures and industries. The Inaugural Flight is only the start to a flourishing future for all Saints and St Helena. I am grateful and humble to have been part of the start of a new journey and era here on the Island."



Alan Shaw, Airport Contracts Manager: "St Helena Airport has been open for over a year and now operates a weekly service to South Africa; a monthly service to Ascension Island begins in November and additional scheduled flights will begin in 2018."

"The Airport continues to accept medevac flights and will do so as the need arises, ensuring Saints and St Helenian residents have rapid access to advanced medical facilities and services overseas. There has also been a demand for executive and business charters to St Helena and this is likely to continue into 2018 as more people discover the delights and opportunities that St Helena has to offer."

"We will actively seek out more business, both in relation to flying opportunities and other business streams that will bring additional funding to the Island. And working with other partners, agencies and Government departments, we will endeavour to grow the Airport so that it can contribute to the continued accessibility and development of St Helena, allowing the Airport to develop as an important gateway to the Island and to the world."

"To enable the Airport to grow and develop, the Airport Operator in conjunction with St Helena Government will ensure the Airport continues to meet strict international standards for safety and security, whilst striving to make the passenger experience as seamless and as pleasant as possible. As such, ongoing training and development of all staff associated with the Airport and its operations will continue."



Inaugural Flight Photo Special

