

Haul Road



Bilberry Field April 2012

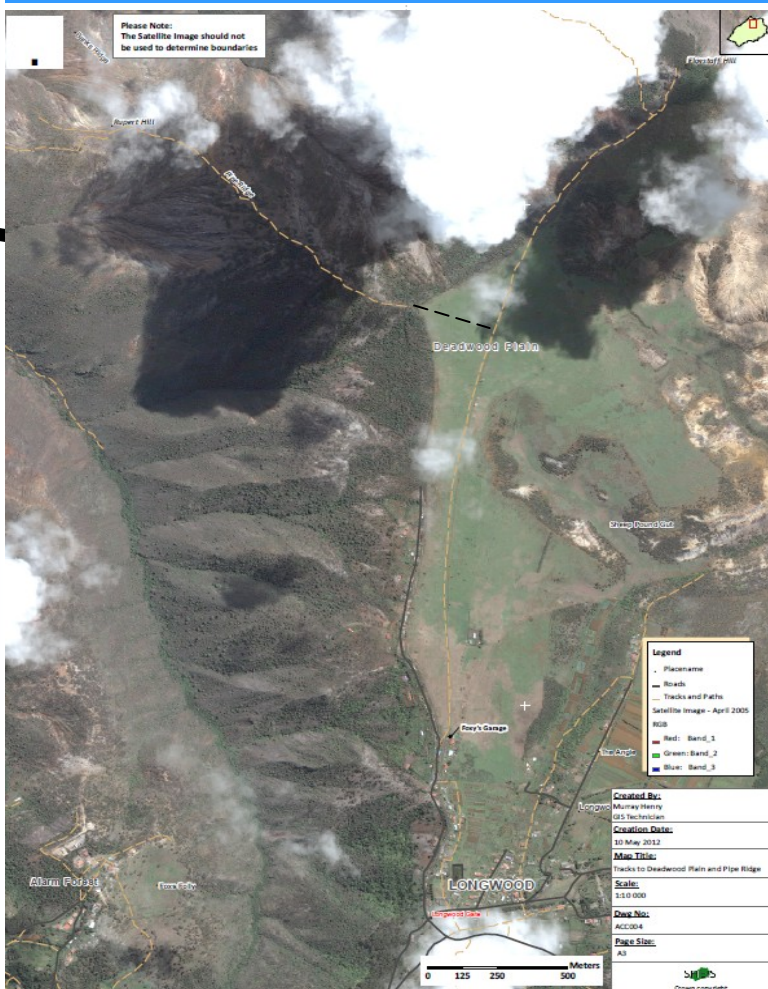


Track through Bilberry Field May 2012

Preliminary project work continues which includes the Temporary Jetty, Fuel Storage Area and the Camp. Last week work also began on the Haul Road. The 14km Haul Road will start in Rupert's Valley, up the slope of Rupert's Hill from just above the Quarantine Station to Pipe Ridge, travelling behind the houses at Deadwood to Foxes Garage, then through Mulberry Gut, Bilberry Field, joining the Public Road at Bottom Woods and onto Prosperous Bay Plain.

The access track through Bilberry Field has already been made pictured above.

Temporary Access Route at Deadwood



We plan to use an alternative route to provide temporary access to move plant through the Deadwood Plain area. The plant will follow the existing track from Pipe Ridge along the fence line (broken black line) and along the track from Flaggstaff to Foxes Garage on map to the left.

For more information on the temporary access route please see overleaf.



Existing track from Flaggstaff to Foxes Garage

Contact Details

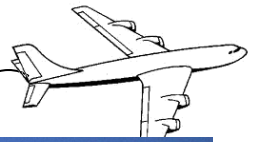
St Helena Government
Access Office
Tel: +290 2494
Email: dd.airport@sainthelena.gov.sh

Halcrow
Project Management Unit
Tel: +290 4258
Email: HuberA@halcrow.com

Basil Read
Contractor
Tel: +290 4026
Email: cschwarz@basilread.co.za

Visit us online at www.sainthelenaaccess.com

Temporary Access Route at Deadwood



What will the alternative route be used for?

Firstly, we already have some smaller plant in use in the area (e.g. the D6 bulldozer). We will use the alternative route to take this plant to the top of Pipe Ridge.

The main use of the alternative route will be for the heavy plant that is arriving on the Basil Read Ship. We need to get this plant through Deadwood to the Airport site (and back again when the project is complete). This means that the heavy plant will only pass through the area twice.

There will also be a period when we will need to take the water bowser and fuel truck through the alternative route each day to collect water and fuel to take to the Airport site. We anticipate that the section of haul road in Deadwood will take about four months to complete and the water bowers and fuel trucks will then use the haul road.

What are the advantages of using the alternative route?

- This will be a temporary measure for approximately four months, until the section of the haul road behind the Deadwood houses is completed.
- We will use an existing track—we do not have to undertake any additional roadworks for this to take place.
- Basil Read will ensure that the existing track is left in an improved condition at the end of the four month period.
- This option ensures that there will be minimal disturbance to Deadwood residents. This is because the large plant will not need to pass the houses on the existing road. We will also not use the main road to take the water bowers and fuel trucks through to the Airport site until it has been upgraded.

What sort of plant are you expecting to travel through the area?

We will have a range of plant under the project. Some examples are pictured on the right.

Could the heavy plant damage the environment if we allow it to travel through Deadwood Plain?

The answer to this is 'no'. Every possible precautionary measure is being taken. For example,:

- Noise/vibration monitoring will be carried out
- The vehicles will stick to the existing track
- A wirebird protocol is already in place and BR will adhere to this.

What about the haul road through Deadwood?

We are currently preparing the final designs for this section of the haul road. The intention is to take a small width from the pasture boundary, so that we will not impact on the boundary near the houses. Again, this minimises the impact on the residents in Deadwood. We can expect to see progress in this area in the next few months and we anticipate that this section of the haul road will be complete in about 4 months.

Thank You

Annina, Margie and Schalk from Basil Read, Andreas from the PMU and Janet from SHG were in Deadwood on Saturday to talk with stakeholders. Thank you to everyone for the support offered. Our thanks particularly to the Deadwood Syndicate who went above and beyond to help us work out an approach that will be practicable for everyone.



D6 Dozer



70 tonne Excavator without the boom



40 tonne Articulated Dump Truck (ADT)



Members of the Deadwood Syndicate



Members of the Deadwood Syndicate with Margie, Annina and Andreas