

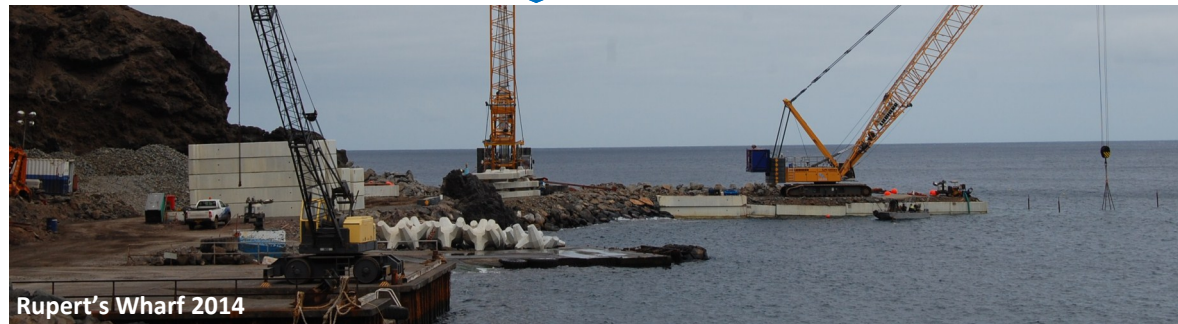


## Rupert's Wharf Timeline

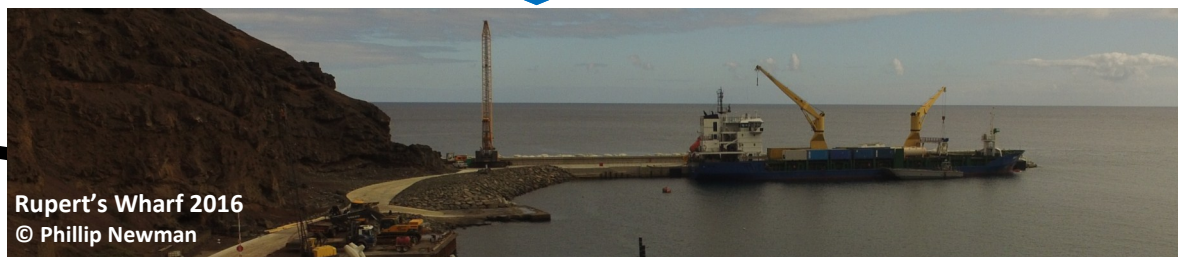
In September 2013 St Helena Government announced that approval had been given to move to the next stage of the Wharf Development at Rupert's. Construction works are now largely complete.



Temporary Jetty 2012



Rupert's Wharf 2014



Rupert's Wharf 2016  
© Phillip Newman

## Thanks to Halcrow Staff

The Airport Project has recently said farewell to two members of the Project Management Unit (PMU) - Andreas Huber, Resident Engineer, and David Colominas, Wharf Resident Engineer. Andreas was involved in the earlier stages of the Airport Project, prior to the Airport 'Pause', returning to the Island in 2012 to head up the (PMU). He worked very closely with Basil Read and their subcontractors and the Access Office to ensure delivery of the Project. Janet Lawrence, Airport Project Director in SHG, said: "It is fair to say that we all benefited from Andreas' vast experience - we would not have reached this stage without him." Andreas retired in May this year but continues to assist the project remotely. David Colominas, Wharf Resident Engineer in the PMU, departed St Helena last week on completion of his contract. David was responsible for overseeing the construction of Rupert's Wharf but also assisted with other civil engineering elements. **We would like to say a big thank you to them both for all their hard work and dedication.**



David Colominas  
Wharf Resident Engineer (Halcrow)  
at the docking of MV Greta



Andreas Huber  
PMU Manager  
(third from right)

## AIRPORT PROJECT INFORMATION LINE - Tel: 24026

### Contact Details

St Helena Government  
Air Access Office  
Tel: +290 22494

Email: [tessa.roberts@sainthelena.gov.sh](mailto:tessa.roberts@sainthelena.gov.sh)

Halcrow  
Project Management Unit  
Tel: +290 24258

Email: [Miles.Leask@ch2m.com](mailto:Miles.Leask@ch2m.com)

Basil Read  
Contractor  
Tel: +290 24026

Email: [pr@brshap.co.za](mailto:pr@brshap.co.za)

Visit us online at [www.sainthelenaaccess.com](http://www.sainthelenaaccess.com) and on Facebook  
[www.facebook.com/StHelenaGovt](https://www.facebook.com/StHelenaGovt)

Copyright for the content of this newsletter and website belongs to SHG and may only be copied, duplicated or reproduced with prior permission.

## Solomon & Company Operating at St Helena Airport

Solomon & Company carries out key operations at St Helena Airport under a contract from Basil Read. Solomons has a history of association with shipping and travel - and sees this opportunity as a natural progression for the organisation. They have been awarded a contract to carry out roles such as passenger check-in, security, ramp handling and cargo processing. Currently, due to the low frequency of flights, Solomons has been utilising existing staff from within the company to guarantee service provision. This gives staff the opportunity to be engaged in new experiences and to be part of an exciting project.

CEO of Solomons, Mandy Peters, said:

"Our day to day contact and liaison with the Airport operator has been through our Human Resources Development Officer, Anya Williams, who has done a great job of co-ordinating our service provision to Basil Read. The arrangements work very well and the Airport operations staff have been very well supported by team members in respective departments."

Around 27 staff from various areas within the company have so far taken the opportunity to work at St Helena Airport and a few external staff members have also been recruited on a part-time basis to support Airport operations.

Solomons has been actively undertaking training and staff have so far completed courses including General Security Awareness, Radio Communications, Airside Vehicle Operations, Dangerous Goods for Check-in and Survivor Reception Centre & Major Incident training. Cargo processing staff have been required to undertake three weeks of overseas training with BidAir in Johannesburg and have completed Dangerous Goods-Category 6, a mandatory qualification for their role. Whilst in Johannesburg they also had the opportunity to work within BidAir's Cargo operation to gain valuable hands-on experience.

CEO of Solomons, Mandy Peters, added:

"It has been an exciting experience for our staff to have been so closely involved with Airport operations. The training and guidance provided by Basil Read, as the Airport operator, have been excellent and the willingness and commitment of our staff to step outside of their day to day roles to take on this intensive training and maintain the professional standards set by Basil Read, has been very pleasing to see. We intend to serve our travel customers to the best of our ability for many years to come, once the current delay with the Airport has been resolved."

Solomon's employee, Ronald Coleman said:

"The training to be a Security Officer at the Airport was very intense and hard work, but we had a great tutor from Lanseria. We all completed the training, with some 100% results among us. We are now Security Screeners who under the Security Supervisor are responsible for the safety of the Airport and aircraft when operational - which is a big responsibility. The Airport itself is a splendid building, world class, and whilst working there and doing on the job training, we have received comments that we are very professional with the screening process. The staff from Solomons who have trained as Security Officers come from different disciplines and I think we all did really well. I know the CEO is proud of us all."



Operational Readiness Trials  
30 April 2016

## Removal of Road

Under the Airport Project rehabilitation, the old road that used to provide access to the Millennium Forest and Horse Point Landfill site no longer exists.

Access to Horse Point is now available via the new Access Road that lies adjacent to where the old road was previously. The weather station intersection providing access to the MET station remains.

The area occupied by the old road is being rehabilitated in partnership with the LEMP Team and St Helena National Trust, and will form an extension to the endemic Millennium Forest.

Topsoil has already been applied to the area in readiness for the planting of endemic species and the area is no longer available to any vehicles.

