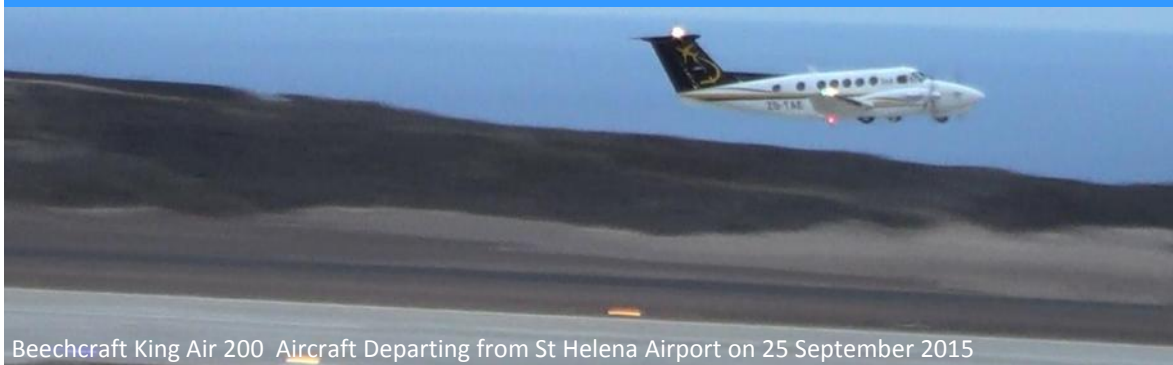




Issue No. 67
1 October 2015
Press Office, SHG

St Helena Airport

Next Steps After Calibration Flights



Beechcraft King Air 200 Aircraft Departing from St Helena Airport on 25 September 2015

The Beechcraft King Air 200 aircraft departed St Helena at 6.10am on Friday, 25 September 2015, having completed a series of calibration flights. On board were the teams from TAB Charters - Grant Brighton, Dillan Van Niekerk and Jeffrey McKenzie - and from Flight Calibration Services Ltd (FCSL), Nick Whitehouse and Stuart Rawlinson.

FCSL is currently in the process of collating and analysing the information gathered during the flights in order to prepare its final report. This report will then inform any further work that might be required on the NavAids. Basil Read Island Director, Deon de Jager said:

"We fully expect to have to undertake some corrective action. This is normal after any calibration procedure and is, of course, the reason we had the calibration flights in the first place - so that we can make sure that the NavAids are functioning properly. We will not know the extent of the work required until we receive FCSL's final report and are able to discuss this with our design teams."

Alongside this, work is continuing to prepare for certification of the Airport. Training has commenced, including training for security personnel at the Airport, and Basil Read is planning a number of exercises to take place in October and November. Emergency exercises are also planned, which will involve personnel at the Airport and also from the local emergency services who would respond in the event of a major incident. Further Airport Operational Trials will be ongoing in readiness for the Airport opening.

Penspen, the fuel management contractor, is also busy planning for deliveries of Jet A1 fuel so that there is a stock of fuel on-Island in readiness for Airport operations. Comair is actively planning for its Implementation Flight to St Helena, when it will bring a Boeing 737-800 to the Island at least one month in advance of Airport operations. This visit by the Comair team will be used to test all aspects of the operations at St Helena Airport. SHG Airport Project Director, Janet Lawrence commented:

"There are a number of different organisations with a role to play in delivering an operational airport and there is a still lot to be done. We have really good teams in place in Basil Read, Halcrow, SHG, Penspen and Comair (to name but a few of the organisations involved) and there is an immense amount of work taking place in the background. We can finally see the various strands beginning to come together - with a view to commencing Airport operations in late February 2016."

Frequently Asked Question

Following the successful first ever landing of a fixed wing aircraft at St Helena's new Airport, one common question has been **"How do I buy a ticket to fly to St Helena?"**

SHG Airport Project Director, Janet Lawrence, said:

"Any passenger buying an airline ticket to a destination expects to arrive at an operational airport. At this stage, St Helena Airport is still under development. We will only be able to confirm that commercial operations can commence once we have been through the certification process. In fairness to passengers wishing to travel to St Helena, Comair will not release tickets for sale until we are far more advanced in the certification process."

The next step in certification is an audit planned for November, which could be followed by further audits. In the meantime, persons interested in flying to St Helena can contact Comair's queries mailbox via sainthelena@comair.co.za

AIRPORT PROJECT INFORMATION LINE - Tel: 24026

Contact Details

St Helena Government
Air Access Office
Tel: +290 22494

Email: tessa.roberts@sainthelena.gov.sh

Halcrow
Project Management Unit
Tel: +290 24258

Email: Andreas.Huber@ch2m.com

Basil Read
Contractor
Tel: +290 24026

Email: pr@brshap.co.za

Visit us online at www.sainthelenaaccess.com and on Facebook
<https://www.facebook.com/pages/St-Helena-Government/292300047580382>

My Impression of the Calibration Flights



Ethel Johns

"Seeing the plane land was a lovely experience. It was such a good feeling to actually see it land as I never thought I would ever live to see it happen. I am now looking forward to seeing the big aircraft next year."

Ethel Johns, Community Care Complex



Qhi Sim-Green

"I was really happy and excited when I saw the plane come from behind the Barn. I was up on the hill and I was jumping up and down. All the people were shouting and clapping when the plane landed. I was so happy."

Qhi Sim-Green, aged 5



Cecily Bateman

"Witnessing the very first plane to land on St Helena was an emotional experience. We have waited so long for an Airport and to see a plane actually land here was remarkable. I have never been off the Island before but I hope that with quicker access I might be able to take a well deserved holiday in the future. Congratulations to everyone who has made this a reality for St Helena and her people."

Cecily Bateman, Longwood Hangings



Jorden Johnson

"I thought that the landing of the plane was very successful. It highlights just how much progress we have made since we first started the Airport Project in 2011."

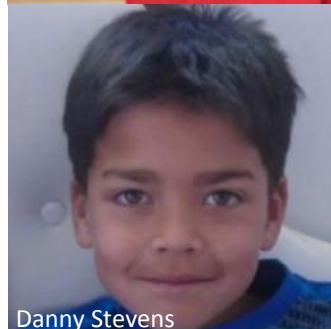
Jorden Johnson, aged 16



Venetia Youde

"It was an emotional day for me as this has been spoken about for years. During my illness in 2011 the only way I was able to travel to receive medical treatment was by ship and I thought I would never see this day. Today has given me hope for the future and my tears were tears of joy."

Venetia Youde, SHAPE



Danny Stevens

"Seeing the plane land was very exciting. I was hoping for a bigger plane but I am just happy that it landed safely and that me and my friends were able to see the very first plane to land on St Helena."

Danny Stevens, aged 8

Nigel Kirby Visit

Visiting the Island from 17-25 September 2015 was DFID Project Manager for St Helena Airport, Nigel Kirby. The main purpose of Nigel's visit to St Helena, and also to Basil Read's Head Office in Johannesburg, was to review progress on the project and discuss current issues and actions.

Nigel commented:

"Sadly, I missed the historic first landing on 15 September, but even on the ship, two days out from the Island, there was a sense of celebration. After thirteen years working on the Airport project, it is hard to describe my feelings when I first saw the Beechcraft King Air 200 aircraft landing on its return from one of the calibration flights on the following Thursday - a significant moment in my life, but a historic moment for St Helena. The next six months is going to be a busy time for everyone. There is a lot of work still to be done, but everyone on the project is working incredibly hard to deliver. The day when St Helena is linked to the world by air is fast approaching. Onwards and upwards!"

Nigel Kirby



Clare Harris Marks 10 Years on Airport Project

Deputy Airport Project Director (Construction & Operations), Clare Harris, recently celebrated her 10th Anniversary with the Access Office. Clare is the longest serving member of the Access Office team, having started work at a time when designs for the Airport were still being developed.

During her career with the Access Office she has witnessed the planning process for the Airport Project, the 'Pause' period, the eventual signing of the Design, Build and Operate Contract with Basil Read, and all of the construction to date. Clare is now immersed in operational plans for the Airport.

Clare remarked how special it was to witness the historic first landing of an aircraft at St Helena Airport, following years of work leading up to that moment.

Airport Project Director, Janet Lawrence, concluded:

"Clare is to be commended on her hard work and dedication to the Airport Project. My thanks to Clare for her drive to deliver the Airport Project, her unfailing commitment and her support to the Access Office team."

