

# Saint Helena Access Project Overview

A planning application has now been submitted for the St Helena Access Project, covering the airport and all of its supporting infrastructure. This leaflet presents artists' impressions of what the airport, the wharf and the new access road might look like when they are completed. Larger versions of the photomontages can be found on the new Access Project website at [www.sainthelenaaccess.com](http://www.sainthelenaaccess.com) in the Airport Development Application section. They will also be on display at the public information meetings.



Road Improvements



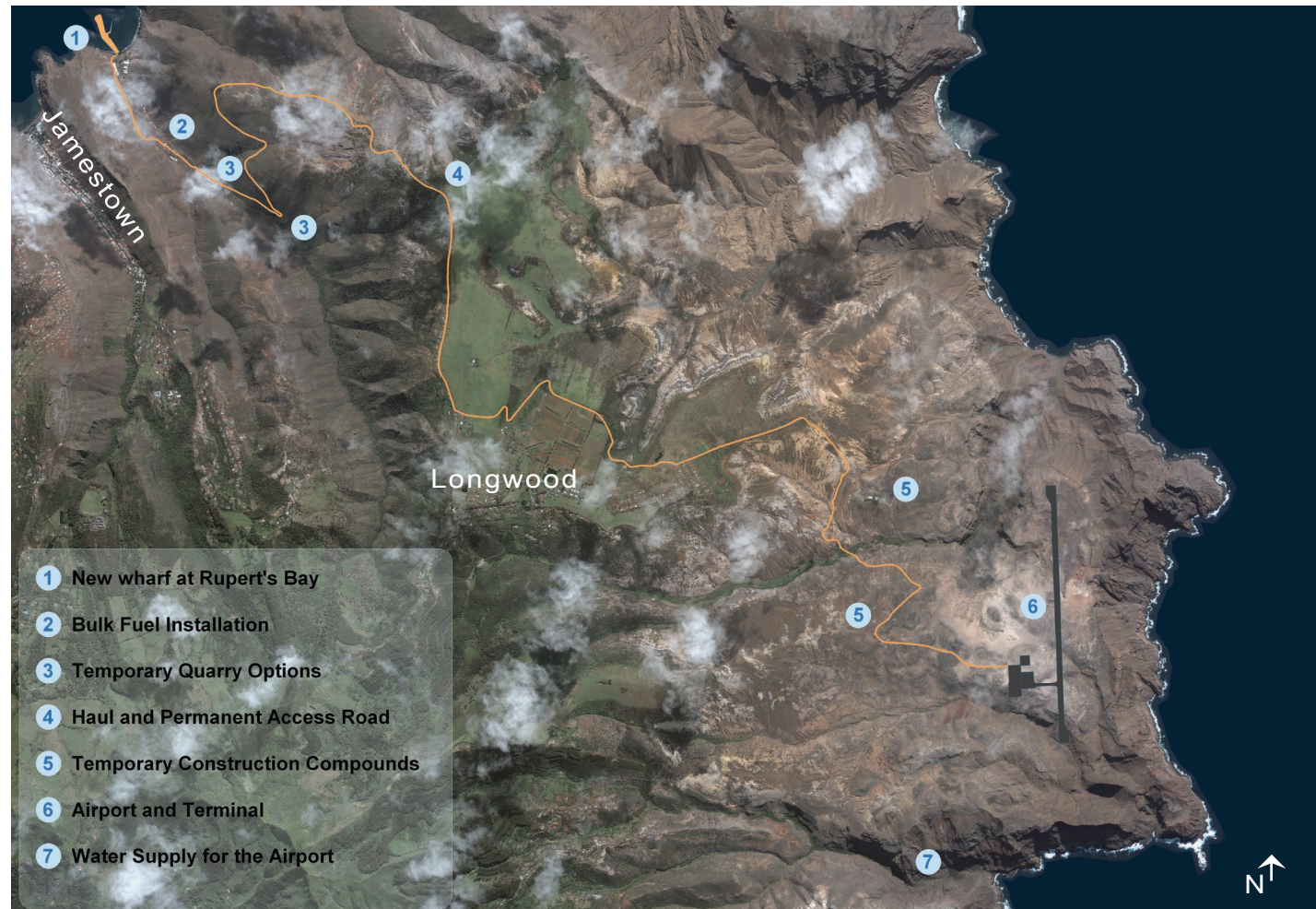
Passenger Terminal and Runway



Airport Entrance



Temporary Wharf Area and New Wharf







Haul Route and Possible Quarry Area



New Water Infrastructure



Runway View from Bottom Woods

What does the  
**planning application**  
cover?

What changes can we  
**expect to the**  
island's  
infrastructure?

What might the  
**new infrastructure**  
look like?

Where can I  
**go to find**  
out more?

To find out more, visit the Access Project's website at [www.sainthelenaaccess.com](http://www.sainthelenaaccess.com), or view full copies of the application documents at the Public Library, National Trust Office, St Helena Development Agency Office, Legal and Lands Office or the Access Office

**Saint Helena Access  
Project Overview**



Public Information 2008