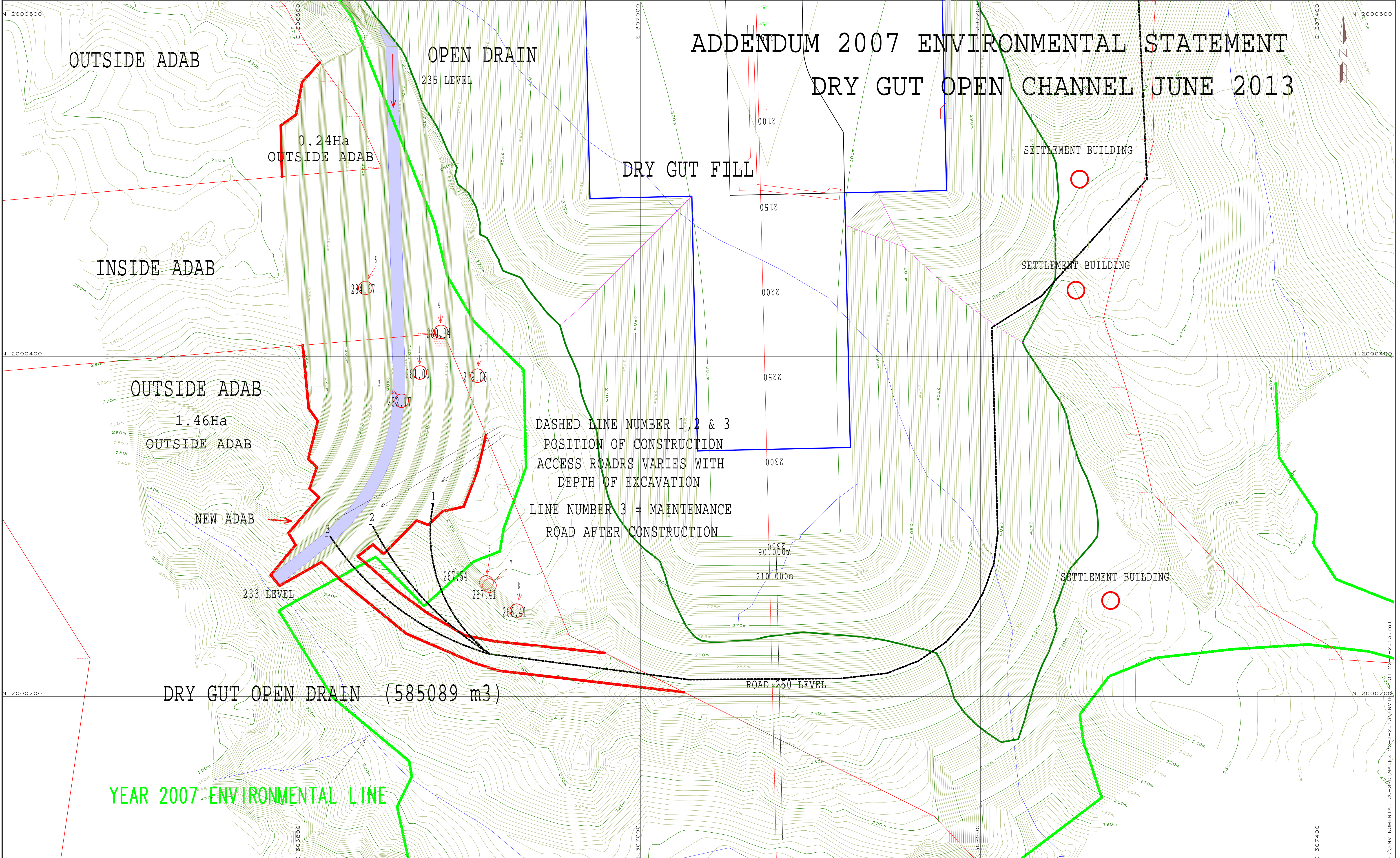


# ADDENDUM 2007 ENVIRONMENTAL STATEMENT DRY GUT OPEN CHANNEL JUNE 2013



DASHED LINE NUMBER 1, 2 & 3  
POSITION OF CONSTRUCTION  
ACCESS ROADS VARIES WITH  
DEPTH OF EXCAVATION  
LINE NUMBER 3 = MAINTENANCE  
ROAD AFTER CONSTRUCTION

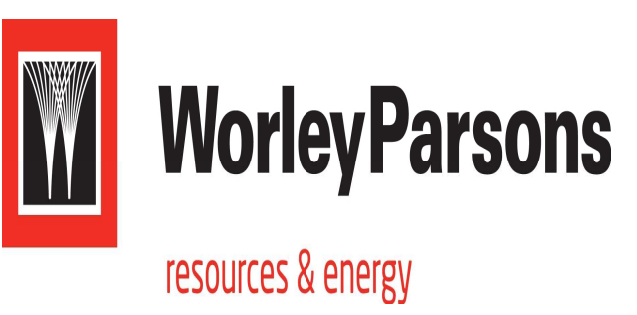
ST HELENA ISLAND  
AIRPORT PROJECT

**CONTRACTOR**



The Basil Read Campus  
7 Romeo Street  
Hughes Ext, Boksburg  
1459, Private Bag X170  
Bedfordview 2008  
Johannesburg, RSA  
T +27 11 418 6300  
F +27 11 418 6334

**LEAD ENGINEERS**



V3 Forum, Garsfontein Road  
Ashlea Gardens  
Pretoria, 0081  
South Africa  
T: +27 (0) 12 425 6300  
F: +27 (0) 12 460 1336

**CLIENT**



**GOVERNMENT OF ST HELENA**  
St Helena Government  
The Castle  
Jamesstown  
St Helena Island  
STHL 1ZZ

TITLE	DRY GUT OPEN DRAIN DESIGN
CHAINAGE	ADDENDUM 2007
DWG	ENVIRONMENTAL STATEMENT
DATE & SCALE	SCALE 1:1000 A1 PAPER SIZE

F:\ENVIRONMENTAL CO-ORDINATES 22-2-2013\ENV PROJ 22-2-2013.mxd