

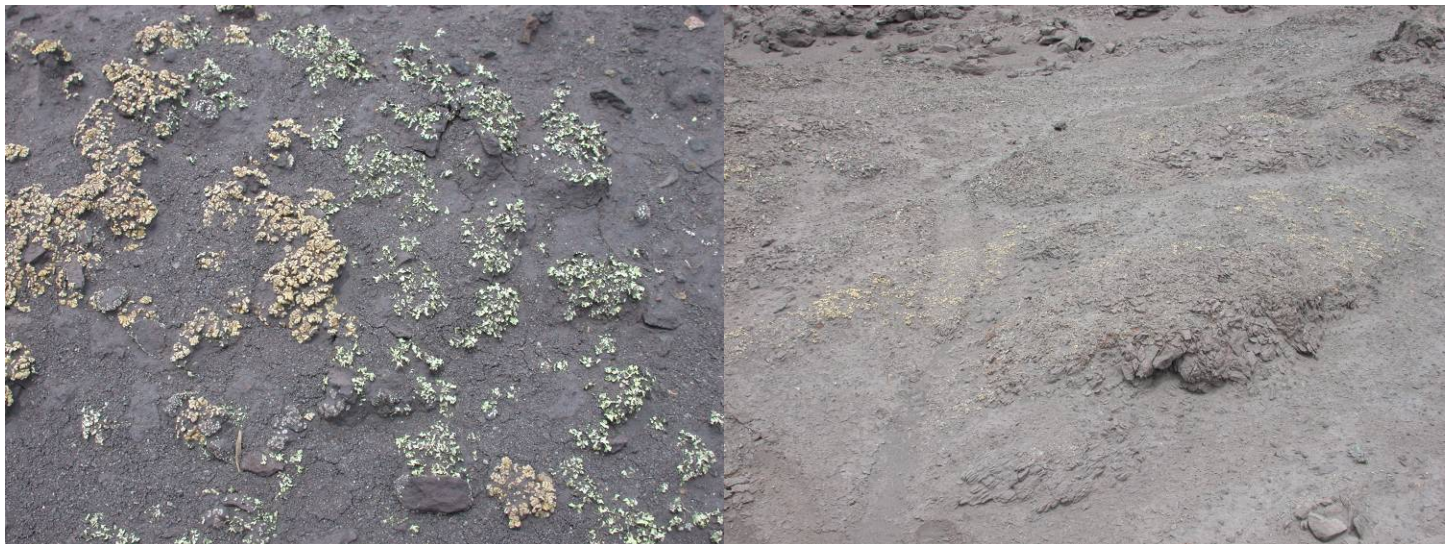
Study sites on St Helena, studied in detail for lichens by A. Aptroot in Oct. 2006

1. Prosperous Bay Plain, on track of runway S of Trig Point. Slope with boulders and soil crusts.  
15°56.923'S, 5°39.019'W(Astro DOS 71/4) alt. 325 m.



*Lepraria xerophila*

2. Prosperous Bay Plain, near begin of Signal House track. Soft lava dust with soil crusts.  
15°56.891'S, 5°38.972'W(Astro DOS 71/4) 144 alt. 330 m.



*Dimelaena triseptata* and *Xanthoparmelia phaeophana*

3. Prosperous Bay Plain, on track of access road N of Bone Gully. Slope with boulders and soil crusts.  
15°57.067'S, 5°39.596'W(Astro DOS 71/4) alt. 330 m.





*Ramalina geniculatella*

4. Prosperous Bay Plain, Bone Gully. Soft lava dust with soil crusts. 15°57.269'S, 5°39.704'W(Astro DOS 71/4) alt. 350 m.



*Heppia lutosa*

5. Prosperous Bay Plain, S of Widow Slope. Slope with boulders and soil crusts. 15°57.461'S, 5°39.450'W(Astro DOS 71/4) alt. 325 m.





*Dimelaena triseptata*



6. Prosperous Bay Plain, Dry Gut upstream of proposed fill. Smooth basalt slope, occasionally wet.  
 15°57.610'S, 5°39.281'W(Astro DOS 71/4) alt. 325 m.





*Psora cerebriformis*

7. Prosperous Bay Plain, Dry Gut at proposed fill. Overhanging basalt cliffs. 15°57.706'S, 5°39.240'W(Astro DOS 71/4) alt. 325 m.



white: *Lecanographa farinulenta*; yellow: *Trentepohlia aurea* algae

8. Prosperous Bay Plain, N slope of Dry Gut on track of runway at proposed fill. Vertical basalt cliff. 15°57.641'S, 5°39.080'W(Astro DOS 71/4) alt. 280 m.





red: *Caloplaca haematodes*



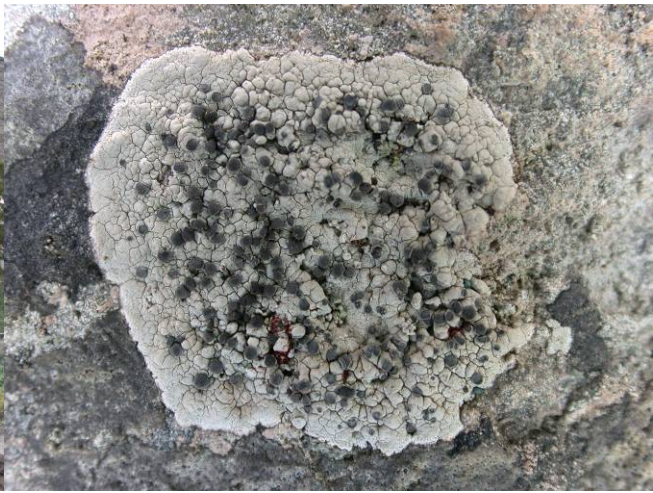
*Ramalina sanctae-helenae* etc.



*Roccella endocrocea*

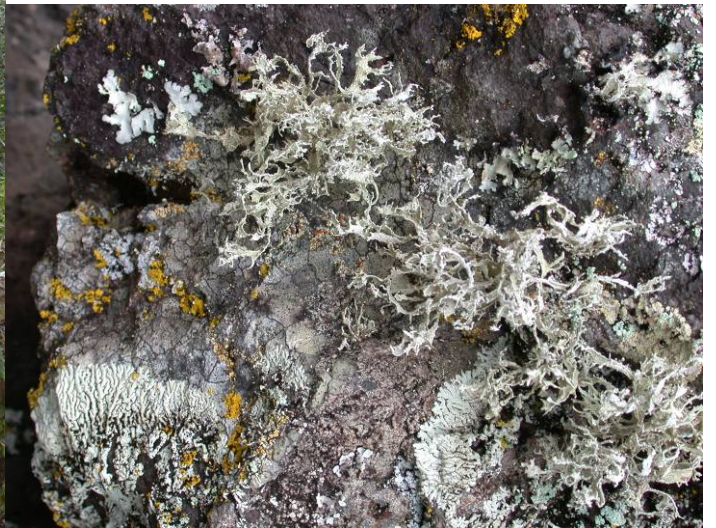
9. Rupert's Village, wharf area and lower slopes behind farm. Slope with boulders and soil crusts.  
 15°55.010'S, 5°42.962'W (Astro DOS 71/4) alt. 40 m.





*Buellia tessarata*

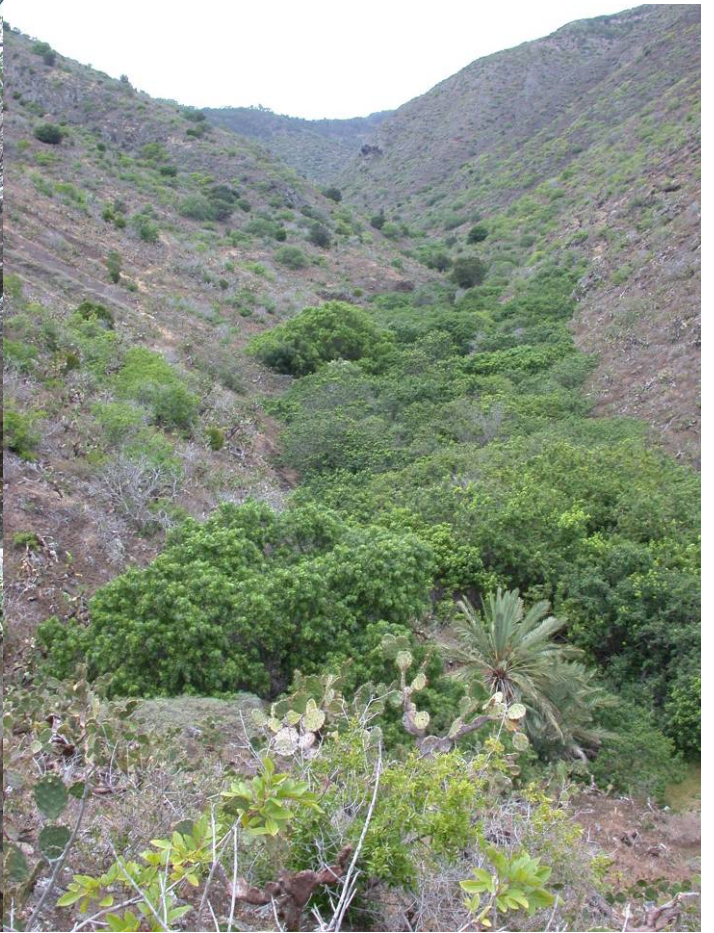
10. Rupert's Valley, lower slopes at begin of ascent of haul road. Vertical basalt cliff. 15°55.547'S, 5°42.436'W(Astro DOS 71/4) alt. 100 m.



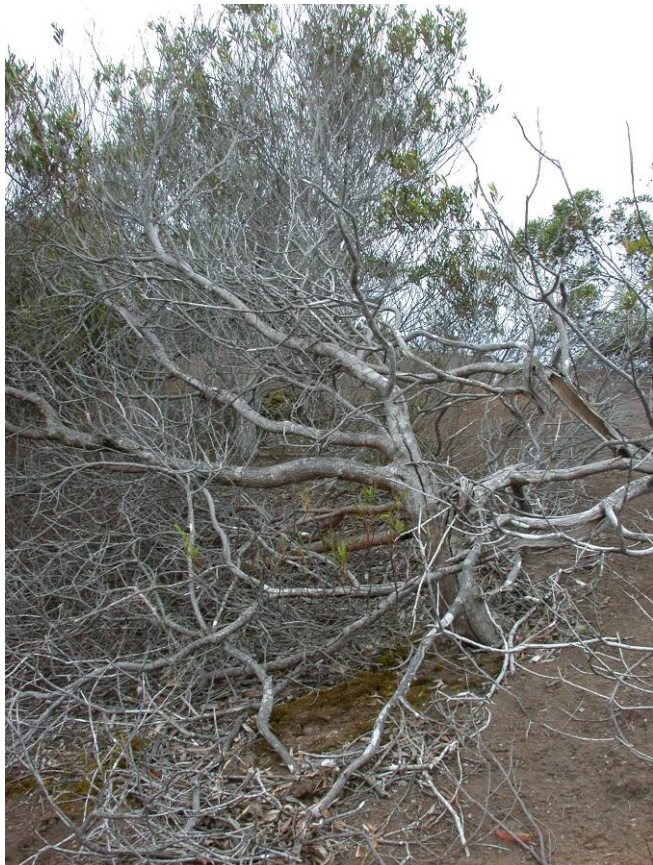
*Ramalina sanctae-helenae*

11. Rupert's Valley, lower slopes at proposed quarry site. Slope with boulders and soil crusts. 15°55.769'S, 5°42.191'W(Astro DOS 71/4) alt. 110 m.





12. Rupert's Hill, along Pipe Path. Slope with boulders and soil crusts. 15°55.011'S, 5°42.098'W(Astro DOS 71/4) alt. 425 m.

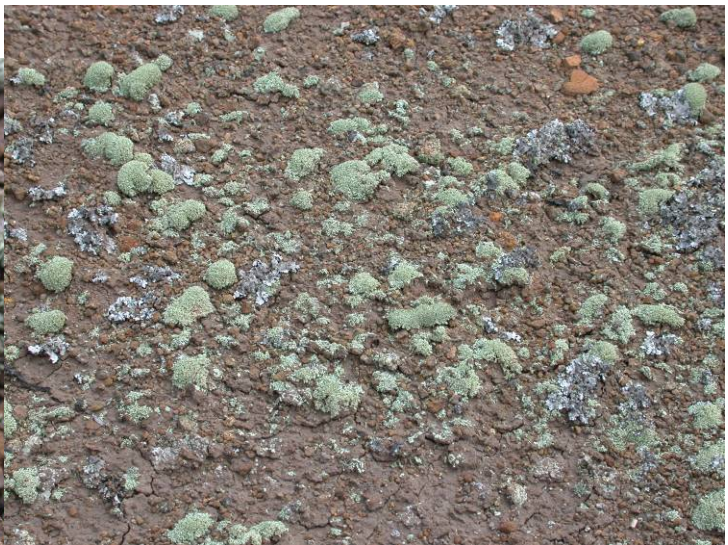


*Lecanora sanctae-helenae*





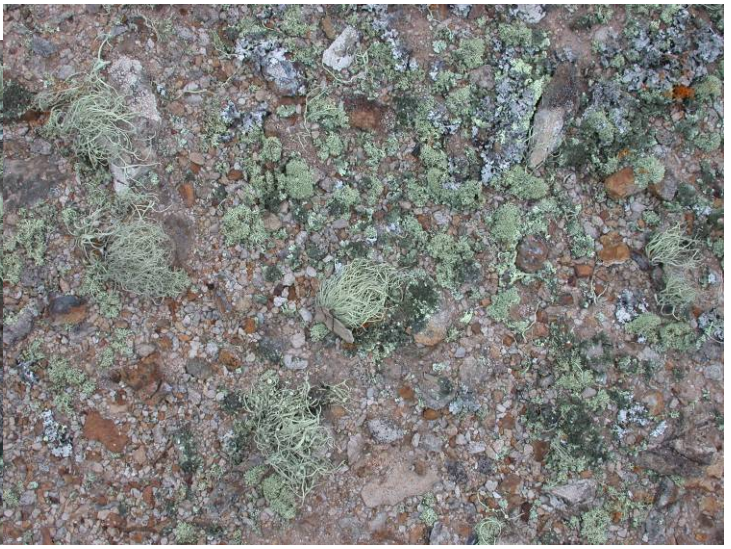
*Xanthoparmelia wildeae*



*Xanthoparmelia beccae*

13. Bryan's Rock. Slope with boulders and soil crusts. 15°55.968'S, 5°39.633'W(Astro DOS 71/4) alt. 400 m.





various *Xanthoparmelias*



*Flavoparmelia soledians*

14. S of Gregory's Battery. Vertical basalt cliff. 15°55.800'S, 5°39.966'W(Astro DOS 71/4) alt. 300 m.



15. Bradleys, N of Government Garage. Slope with boulders and soil crusts. 15°56.651'S, 5°39.572'W(Astro DOS 71/4) alt. 350 m.





16. Above Jamestown, along track to Saddle Battery. Vertical basalt cliff. 15°55.744'S, 5°42.817'W(Astro DOS 71/4) alt. 250 m.



*Ramalina ketner-oostae*

*Ramalina rigidella*

17. The Barn, along God's Path. Vertical basalt cliffs and slope with boulders and soil crusts. 15°54.929'S, 5°40.428'W(Astro DOS 71/4) alt. 475 m.