

## 2 Population and vital statistics

### Commentary

#### Population

Table 2.1.1 shows the enumerated population for St Helena, Ascension and Tristan da Cunha at every Census since discovery. The enumerated population is derived from a “head count” – i.e. a count of all persons present on the Island.

For St Helena the estimated population (table 2.1.2) has also been calculated on a quarterly basis from the 2008 population Census to present. The estimated population is calculated by “rolling forward” the Census population for births, deaths and balance of inwards and outwards migration.

The Island of St Helena was uninhabited when discovered by the Portuguese in 1502. In 1657 the English East India Company was granted a charter to govern the Island and began to fortify and colonise the Island. The first population Census, taken in 1683, counted approximately 500 residents. The population had grown to around 7,000 by 1850, following fortification of the Island. At the turn of the twentieth century approximately 5,000 Boer prisoners of war were held on St Helena which increased the population to almost 10,000. The population level has since fallen considerably. Recent population figures have been strongly influenced by an increasing number of Saints seeking employment overseas and an associated declining birth rate. The restoration of British Citizenship was restored to St Helena in 2002 further increased the impact of labour migration on the population. By 2008 the population had declined to 4,257 and since then has shown relatively small growth with the estimated population at quarter 4 2012 being 4,280.

There is no indigenous or permanent population on Ascension. The people living there are military and contract workers, the majority coming from St Helena, the UK and the US. The figures included in table 2.1.1 are for St Helenians living on Ascension.

The remote territory of Tristan da Cunha is home to a permanent population of a little over 250. Although governance is shared with St Helena, the Tristanian population is very much independent.

Table 2.2 shows the resident population (“de jure” or enumerated population less visitors) of St Helena at the 2008 Census. The age and gender structure shown in chart 2.2 compares 1998 with 2008 Census data. This indicates a high dependency ratio with the majority of the population being economically inactive (i.e. children and the elderly) and a relatively small proportion being economically active. From 1998 to 2008 we see an aging population and a stark reduction in numbers of young adults (aged 20-40) and an associated reduction in number of births. In this edition an estimated resident population of St. Helena by age and gender for 2012 was included.

## **2 Population and vital statistics**

### **Birth and death rates**

Table 2.3 shows the number of births on St Helena and crude birth rates (number of births per 1,000 population). Table 2.4 shows numbers of deaths and crude mortality rates (deaths per 1,000 population). The total number of births and deaths per year is small, birth and death rates are estimated using 5-year moving averages. These rates are not adjusted for changes in the age structure of the population.

Historically, births rates (although declining) have exceeded deaths rates. However, since 2003, the opposite effect has death rates on St Helena exceeding the birth rates, reflecting the aging population and the steady decline in numbers of births. At present there are approximately 8 births per thousand population in contrast with approximately 11 deaths. There has been a marked decrease in the number of births since 2000.

### **Infant mortality**

Infant mortality is a measure of the number of infants who die before reaching their first birthday. Table 2.4 uses a 5 year moving average to measure infant mortality on St. Helena and indicates a decline from 50 per thousand live births in 1950 to 0.0 per thousand live births in 2010 and 2011. In 2012 the infant mortality rate rose to 5.8; however this is still a significant decrease from those years previous to 2000. Low rates such as this usually indicates a general rise in health care standards and living conditions.

For comparative purposes rates for the UK and the World were also included in tables 2.3 and 2.4. Please note these rates are annual averages and not 5 year moving averages.

## 2.1.1 Enumerated population<sup>1</sup> of St Helena, Ascension & Tristan Da Cunha

1501-2008							<i>numbers</i>
	St Helena			Ascension <sup>2</sup>			Tristan da Cunha
	Males	Females	Total	Males	Females	Total	Total
1501						Discovery	
1502			Discovery	..	..	..	
1506	..	..	..	..	..	..	Discovery
1683	..	..	500	..	..	..	..
1723	..	..	1,110	..	..	..	..
1810	..	..	..	..	..	..	3
1814	..	..	3,507	..	..	..	..
1851	..	..	6,914	..	..	..	85
1880	..	..	..	..	..	..	102
1881	..	..	5,059	..	..	..	..
1891	..	..	4,116	..	..	..	..
1901	..	..	9,850	..	..	..	73
1911	..	..	3,520	..	..	..	..
1921	..	..	3,747	..	..	..	..
1925	..	..	..	..	..	..	135
1931	1,904	2,091	3,995	114	12	126	150
1946	2,181	2,567	4,748	205	23	228	230
1956	2,224	2,418	4,642	308	28	336	248
1966	2,233	2,416	4,649	428	48	476	267
1976	2,514	2,633	5,147	539	180	719	292
1987	2,769	2,875	5,644	508	214	722	296
1998	2,612	2,545	5,157	458	254	712	..
2008	2,165	2,092	4,257	401	309	710	264

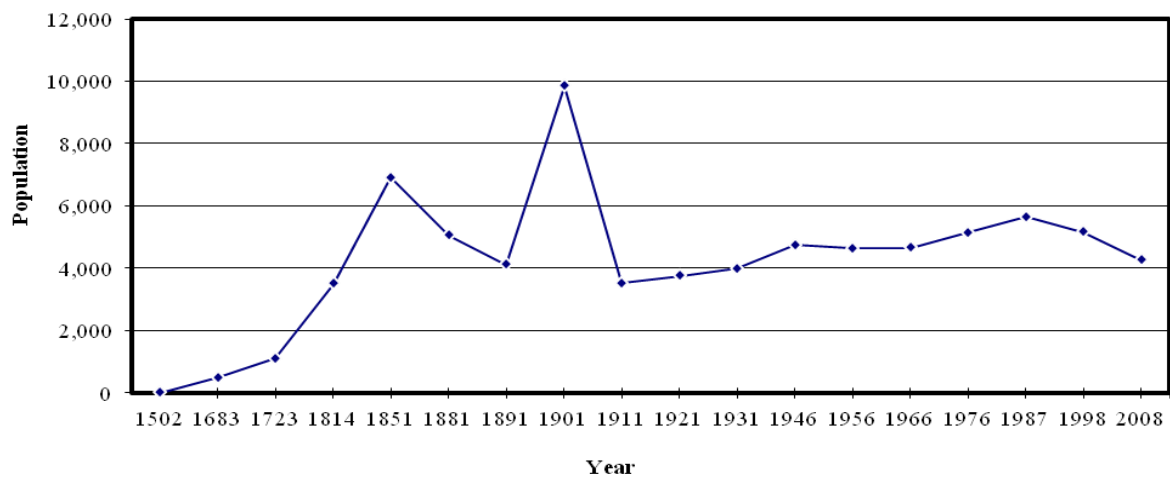
Sources: *St Helena and Ascension 2008 Population Census Report;*  
*Tristan da Cunha.*

<sup>1</sup> Enumerated population includes visitors.

<sup>2</sup> For Ascension, only St Helenians are enumerated.

.. Data not available

### 2.1.1 Enumerated population of St. Helena 1502-2008



Sources: *St Helena and Ascension 2008 Population Census Report;* *Tristan da Cunha.*

## 2 Population and vital statistics

### 2.1.2 Estimated total population<sup>1</sup> of St Helena

2008 - 2012

numbers

2008 Census Baseline<sup>2</sup>

4,077

	Estimated Population
2008 Qtr 2	3,940 <sup>3</sup>
Qtr 3 <sup>4</sup>	3,870
Qtr 4	4,020
2009 Qtr 1	4,050
Qtr 2	3,920
Qtr 3	3,900
Qtr 4	4,110
2010 Qtr 1	4,080
Qtr 2	4,060
Qtr 3	3,990
Qtr 4	4,220
2011 Qtr 1	4,110
Qtr 2 <sup>5</sup>	4,040
Qtr 3	3,980
Qtr 4	4,090
2012 Qtr 1	4,180
Qtr 2	4,080
Qtr 3	4,060
Qtr 4	4,280

Source: Statistics Office, CPPU

NB: These figures are an average over the quarter, rounded to the nearest 10.

<sup>1</sup> Estimated total population includes visitors, excluding the crew of the RMS.

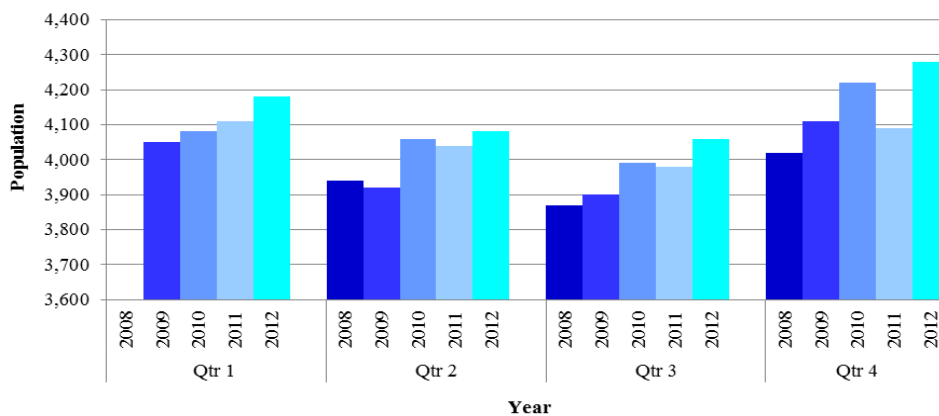
<sup>2</sup> The baseline was set at the 2008 Census which was held in February.

<sup>3</sup> This is an average figure of the Harbour Master / Solomons Shipping / HM Customs

<sup>4</sup> Figures were sourced from the RMS, however they were only available from Qtr2 2008 onwards.

<sup>5</sup> From April 2011 population figures were sourced from the Immigration Database only.

2.1.2 Estimated Population of St Helena - 2008-2012



Source: Statistics Office, CPPU

## 2 Population and vital statistics

### 2.2

#### Census and Estimated resident population<sup>1</sup> of St Helena by age and gender

Census Year	1998		2008		2012 <sup>2</sup>		1998	2008	2012 <sup>2</sup>
	Male	Female	Male	Female	Male	Female	Total	Total	Total
0-4	174	140	84	82	87	85	314	166	172
5-9	204	169	109	89	113	92	373	198	205
10-14	200	170	124	112	128	116	370	236	244
15-19	217	236	149	136	154	141	453	285	295
20-24	155	146	79	76	82	79	301	155	161
25-29	185	188	73	89	76	92	373	162	168
30-34	152	183	83	102	86	106	335	185	192
35-39	183	213	131	150	136	155	396	281	291
40-44	183	156	168	154	174	159	339	322	333
45-49	177	170	169	173	175	179	347	342	354
50-54	204	152	157	131	162	136	356	288	298
55-59	127	113	172	154	178	159	240	326	337
60-64	127	75	197	134	204	139	202	331	343
65-69	88	105	130	112	135	116	193	242	251
70-74	51	93	105	78	109	81	144	183	190
75-79	41	70	54	74	56	77	111	128	133
80-84	25	44	26	57	27	59	69	83	86
85-89	7	19	9	36	9	37	26	45	46
90-94	7	11	2	16	2	17	18	18	19
95 and over	0	1	0	4	0	4	1	4	4
Not stated	4	6	1	0	1	0	10	1	1
<b>Total</b>	<b>2,511</b>	<b>2,460</b>	<b>2,022</b>	<b>1,959</b>	<b>2,094</b>	<b>2,029</b>	<b>4,971</b>	<b>3,981</b>	<b>4,123</b>
<b>Summary:</b>									
0-14	578	479	317	283	328	293	1057	600	621
15-64	1,710	1,632	1,378	1,299	1,427	1,345	3342	2,677	2,772
65 and over	219	343	326	377	338	391	562	703	729
Not stated	4	6	1	0	1	0	10	1	1

Source: 1998 & 2008 Population Census Report

<sup>1</sup> Resident population is the enumerated population excluding visitors.

<sup>2</sup> Estimated resident population by age calculated from age-sex distribution of 2008 Census Population and Estimated Resident Population at end of 2012.

## 2.2 St Helenian resident population of St Helena by age and gender: 1998 & 2008

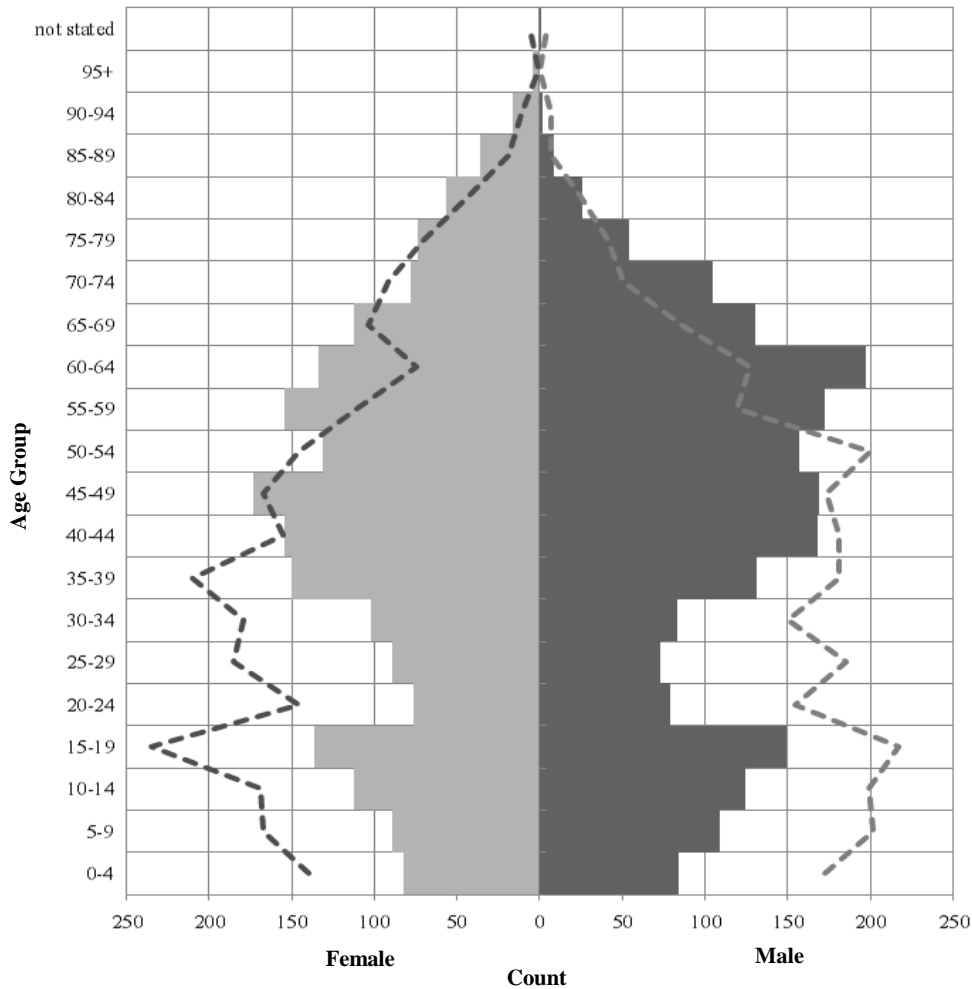


Chart 2.2 shows the resident population of St Helena at the 1998 (dashed line) and 2008 (bars) Censuses. In 1998 the resident population stood at 4,913 (2,481 males and 2,432 females) however by 2008 resident population had declined to 3,981 (2,022 males and 1,959 females).

Source: Statistics Office, CPPU, and Register of births and deaths & Customer Services Centre.

## 2.3 Birth rate 2003 - 2012

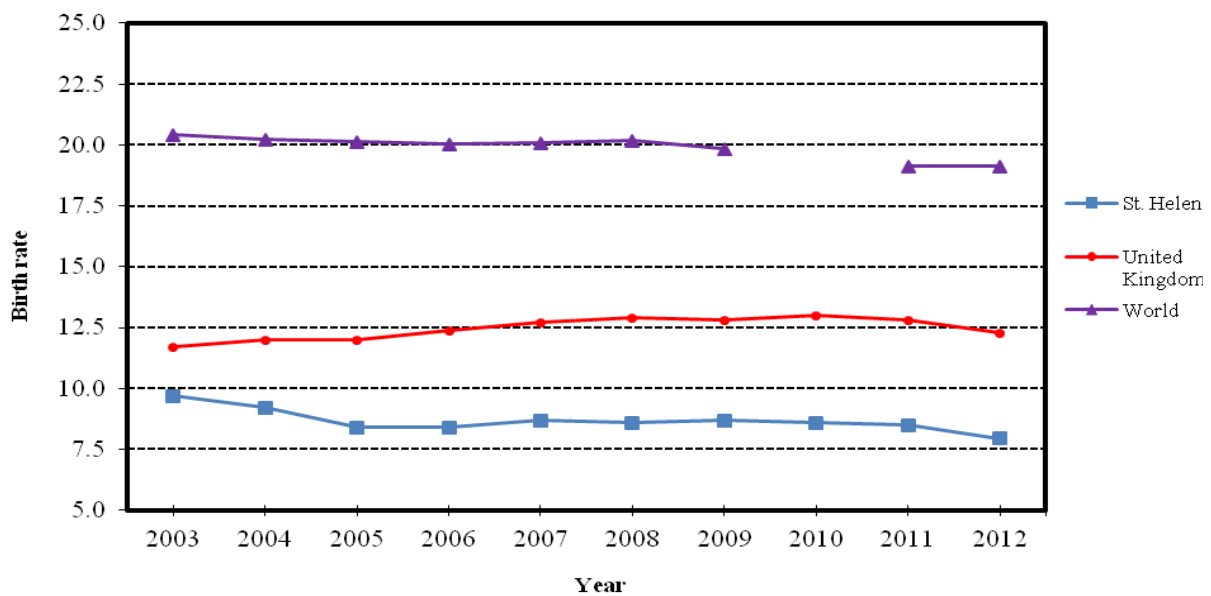


Chart 2.3 shows the St Helena infant mortality rate per 1,000 live births in a 5 year moving average. Birth rates for the United Kingdom and the World are crude birth rates.

Source: Registrar of births and deaths & Customer Services Centre, Office for National Statistics, Central Intelligence Agency (CIA)

## 2 Population and vital statistics

### 2.3 Number of births and birth rate

1990 - 2012

numbers and rates

Year	Births			Birth rate			
	Males	Females	Total	St. Helena <sup>1</sup>	United Kingdom <sup>2</sup>	World <sup>2</sup>	
1990	31	34	65	14.3	13.9	27.0	
1991	32	40	72	13.4	13.8	26.0	
1992	51	27	78	14.3	13.6	26.0	
1993	40	29	69	14.1	13.2	25.0	
1994	30	28	58	13.1	13.0	25.0	
1995	43	29	72	13.6	12.6	24.0	
1996	29	30	59	13.1	12.6	23.0	
1997	32	32	64	12.7	12.6	23.0	
1998	22	27	49	12.1	12.3	22.0	
1999	26	26	52	11.9	11.9	22.0	
2000	32	24	56	11.5	11.5	22.0	
2001	20	16	36	10.8	11.3	21.4	
2002	21	18	39	9.9	11.3	21.2	
2003	21	16	37	9.7	11.7	20.4	
2004	11	23	34	9.2	12.0	20.2	
2005	20	14	34	8.4	12.0	20.2	
2006	18	17	35	8.4	12.4	20.1	
2007	25	17	42	8.7	12.7	20.1	
2008	19	17	36	8.6	12.9	20.2	
2009	17	18	35	8.6 <sup>†</sup>	12.8	19.9	
2010	18	16	34	8.5	13.0	..	
2011	15	19	34	8.4	12.8	19.2	
2012	15	17	32	7.8	12.3	19.1	
2010	Qtr 1	4	2	6	..	..	..
	Qtr 2	7	3	10	..	..	..
	Qtr 3	4	7	11	..	..	..
	Qtr 4	3	4	7	..	..	..
2011	Qtr 1	5	5	10	..	..	..
	Qtr 2	1	2	3	..	..	..
	Qtr 3	6	8	14	..	..	..
	Qtr 4	3	4	7	..	..	..
2012	Qtr 1	5	4	9	..	..	..
	Qtr 2	2	1	3	..	..	..
	Qtr 3	3	6	9	..	..	..
	Qtr 4	5	6	11	..	..	..

Source: Registrar of births and deaths & Customer Services Centre, Office for National Statistics, Central Intelligence Agency (CIA)

<sup>1</sup> Rate per 1,000 population, 5 year moving average.

<sup>2</sup> The average annual number of births during a year per 1,000 persons in the population at midyear. (Also known as Crude Birth Rate)

<sup>†</sup> Revised figures

.. Data not available

## 2 Population and vital statistics

### 2.4 Number of deaths, death rate and infant mortality

1990 - 2012

Year	Deaths			Death Rate			Infant mortality <sup>3</sup>	Infant mortality rate			
	Males	Females	Total	St. Helena <sup>1</sup>	United		Number of infant deaths <sup>2</sup>	St. Helena <sup>3</sup>	United		
					Kingdom <sup>4</sup>	World <sup>4</sup>			Kingdom <sup>5</sup>	World <sup>5</sup>	
1990	18	17	35	8.6	11.2	9.0	2	28.1	7.9	70.0	
1991	21	21	42	8.3	11.2	9.0	0	22.1	7.4	66.0	
1992	27	16	43	8.6	11.0	9.0	2	23.6	6.6	63.0	
1993	31	27	58	8.8	11.4	9.0	0	21.4	6.4	66.0	
1994	28	26	54	8.9	10.8	9.0	2	17.5	6.2	65.0	
1995	21	9	30	8.8	11.1	9.0	2	17.2	6.2	64.0	
1996	26	18	44	8.9	11.0	9.0	0	17.9	6.1	60.0	
1997	13	17	30	8.5	10.8	9.0	0	12.4	5.9	59.0	
1998	22	17	39	7.8	10.7	9.0	1	16.5	5.8	58.0	
1999	24	21	45	7.6	10.7	9.0	0	10.1	5.8	56.0	
2000	28	25	53	8.6	10.4	9.0	0	3.6	5.6	54.0	
2001	21	20	41	8.7	10.2	8.9	0	3.9	5.5	52.6	
2002	25	27	52	9.8	10.2	8.9	0	4.3	5.3	51.6	
2003	23	21	44	10.3	10.3	8.8	1	4.5	5.3	51.4	
2004	15	18	33	10.1	9.8	8.9	0	5.0	5.1	50.3	
2005	21	18	39	9.7	9.7	8.8	1	5.6	5.1	50.1	
2006	31	21	52	10.4	9.4	8.7	0	5.1	5.0	48.9	
2007	31	28	59	10.9	9.4	8.4	0	5.0	4.8	43.5	
2008	25	19	44	10.9	9.4	8.2	0	5.1	4.7	42.1	
2009	20	21	41	11.2	9.0	8.4	0	5.0	4.6	44.1	
2010	31	22	53	11.7	9.0	..	0	0.0	4.3	..	
2011	22	27	49	11.5	8.7	8.1	0	0.0	4.3	41.6	
2012	36	26	62	11.3	9.3	8.0	1	5.8	4.6	39.5	
2010	Qtr 1	7	8	15	..	..	..	0	..	..	..
	Qtr 2	10	2	12	..	..	..	0	..	..	..
	Qtr 3	8	8	16	..	..	..	0	..	..	..
	Qtr 4	6	4	10	..	..	..	0	..	..	..
2011	Qtr 1	1	7	8	..	..	..	0	..	..	..
	Qtr 2	10	2	12	..	..	..	0	..	..	..
	Qtr 3	5	9	14	..	..	..	0	..	..	..
	Qtr 4	6	9	15	..	..	..	0	..	..	..
2012	Qtr 1	7	9	16	..	..	..	0	..	..	..
	Qtr 2	6	6	12	..	..	..	0	..	..	..
	Qtr 3	12	7	19	..	..	..	0	..	..	..
	Qtr 4	11	4	15	..	..	..	1	..	..	..

Source: Registrar of births and deaths & Customer Services Centre, Office for National Statistics, Central Intelligence Agency (CIA)

<sup>1</sup> Rate per 1,000 mid year estimated population, 5 year moving average.

<sup>2</sup> Infant deaths are also included in total deaths.

<sup>3</sup> Rate per 1,000 live births, 5 year moving average.

<sup>4</sup> Average annual number of deaths during a year per 1,000 population at midyear. (Also known as Crude Death Rate)

<sup>5</sup> Rate per 1,000 live births in the same year.

.. Data not available



### 2.4a Death rate 2003 - 2012

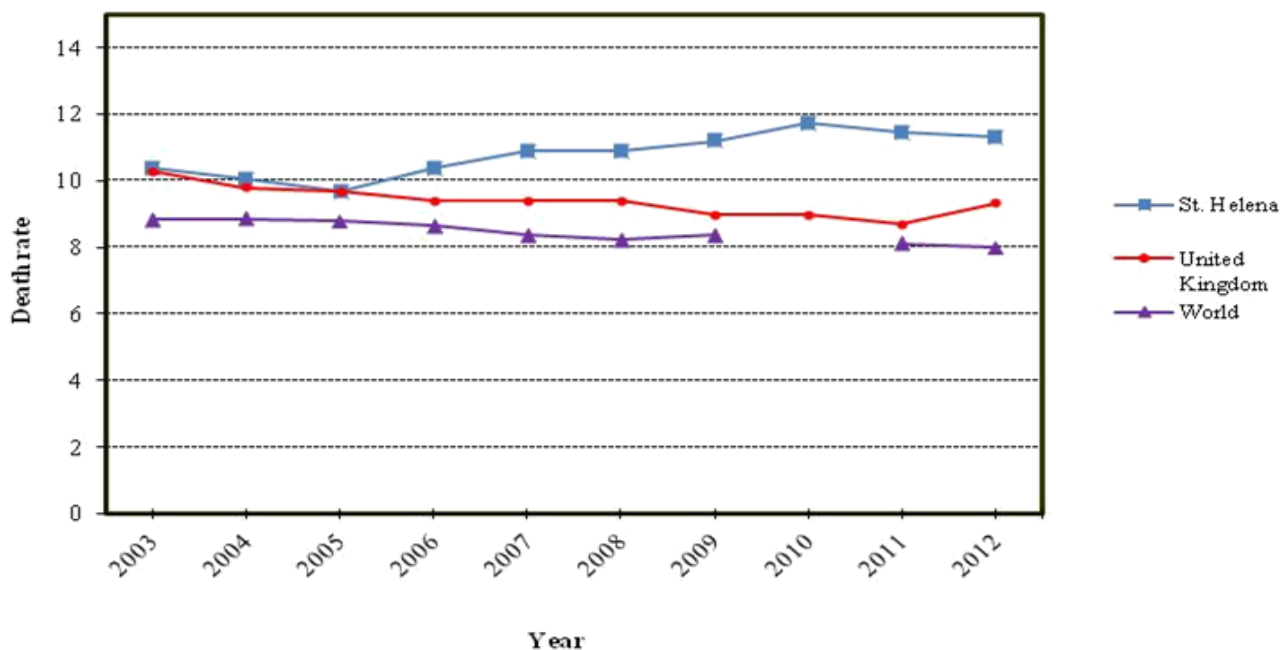
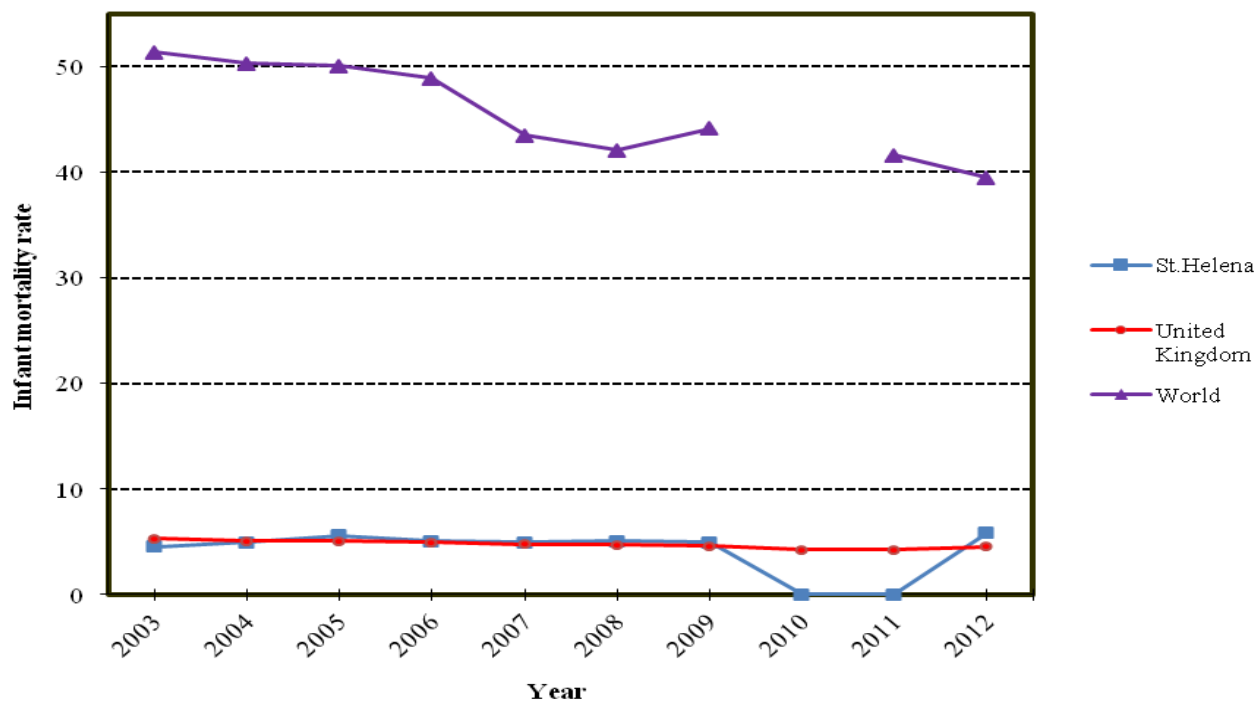


Chart 2.4a shows the St Helena death rate per 1,000 population in a 5 year moving average. Death rates for the United Kingdom and the World are crude death rates.

Source: Registrar of births and deaths & Customer Services Centre, Office for National Statistics, Central Intelligence Agency (CIA)

### 2.4b Infant mortality rate 2003 - 2012



St Helena infant mortality rate per 1,000 live births, 5 year moving average. St Helena infant mortality dropped to 0 in year 2010/2011.

Infant mortality rates for the United Kingdom and the World are crude infant mortality rates.

Source: Registrar of births and deaths & Customer Services Centre, Office for National Statistics,

## 2 Population and vital statistics

### 2.5 Number of deaths and crude death rates by gender and age group

2004 - 2012

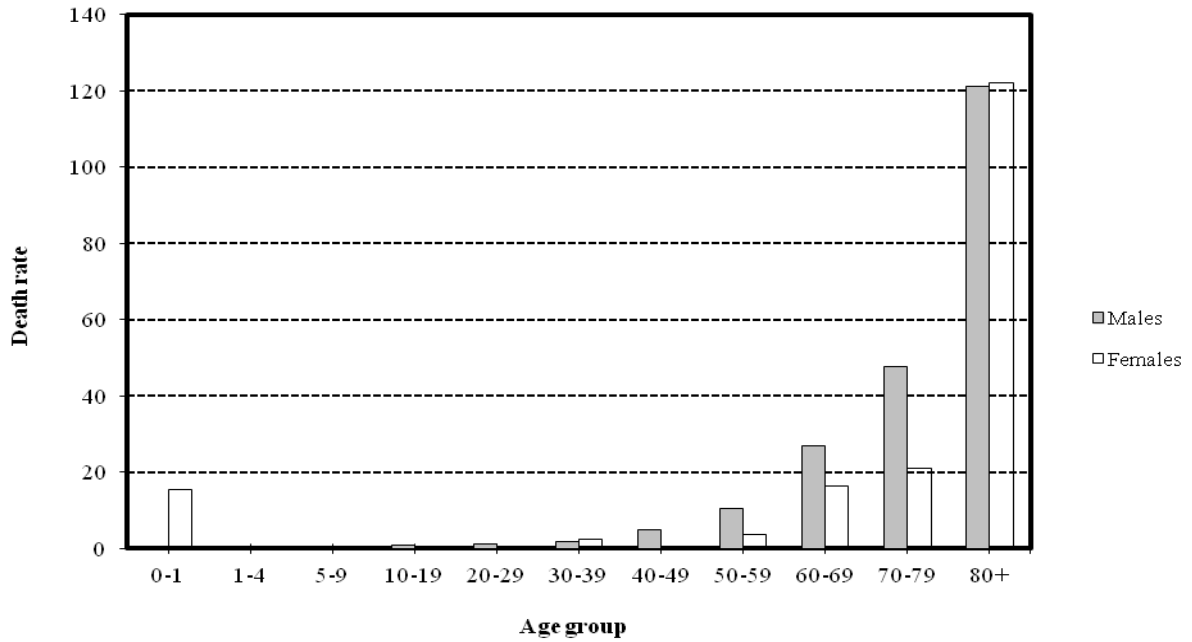
number

Age last birthday	2004	2005	2006	2007	2007	2008	2009	2010	2011	2012	Death rate <sup>1</sup> 2008 - 2012
<b>Males</b>											
0-1	0	1	0	0	0	0	0	0	0	0	0.0
1-4	0	0	0	0	0	0	0	0	0	0	0.0
5-9	0	0	1	0	0	0	0	0	0	0	0.0
10-19	1	0	0	0	0	0	0	0	1	0	0.7
20-29	0	0	0	0	0	0	0	0	0	1	1.3
30-39	0	0	2	2	2	0	0	2	0	0	1.9
40-49	0	2	4	1	1	0	0	2	2	4	4.7
50-59	5	3	2	4	4	4	3	3	3	4	10.3
60-69	4	2	5	8	8	9	8	11	7	9	26.9
70-79	3	9	10	7	7	9	5	6	7	11	47.8
80 and over	3	4	7	9	9	3	4	7	2	7	121.1
Total	16	21	31	31	31	25	20	31	22	36	13.3
<b>Females</b>											
0-1	0	0	0	0	0	0	0	0	0	1	15.4
1-4	0	0	0	0	0	0	0	0	0	0	0.0
5-9	0	0	0	0	0	0	0	0	0	0	0.0
10-19	0	0	0	0	0	0	0	0	0	0	0.0
20-29	0	0	0	2	2	0	0	0	0	0	0.0
30-39	0	0	0	1	1	1	0	2	0	0	2.4
40-49	0	0	0	0	0	0	0	0	1	0	0.6
50-59	0	0	1	3	3	1	2	0	0	2	3.5
60-69	0	2	2	6	5	4	3	2	7	4	16.3
70-79	10	3	4	4	4	0	5	4	2	5	21.1
80 and over	8	13	14	12	13	13	11	14	17	14	122.1
Total	18	18	21	28	28	19	21	22	27	26	11.7
<b>Total</b>											
0-1	0	1	0	0	0	0	0	0	0	1	6.7
1-4	0	0	0	0	0	0	0	0	0	0	0.0
5-9	0	0	1	0	0	0	0	0	0	0	0.0
10-19	1	0	0	0	0	0	0	0	1	0	0.4
20-29	0	0	0	2	2	0	0	0	0	1	0.6
30-39	0	0	2	3	3	1	0	4	0	0	2.1
40-49	0	2	4	1	1	0	0	2	3	4	2.7
50-59	5	3	3	7	7	5	5	3	3	6	7.2
60-69	4	4	7	14	14	13	11	13	14	13	22.3
70-79	13	12	14	11	11	9	10	10	9	16	34.7
80 and over	11	17	21	21	21	16	15	21	19	21	121.9
Total	34	39	52	59	59	44	41	53	49	62	12.5

Source: Statistics Office, CPPU

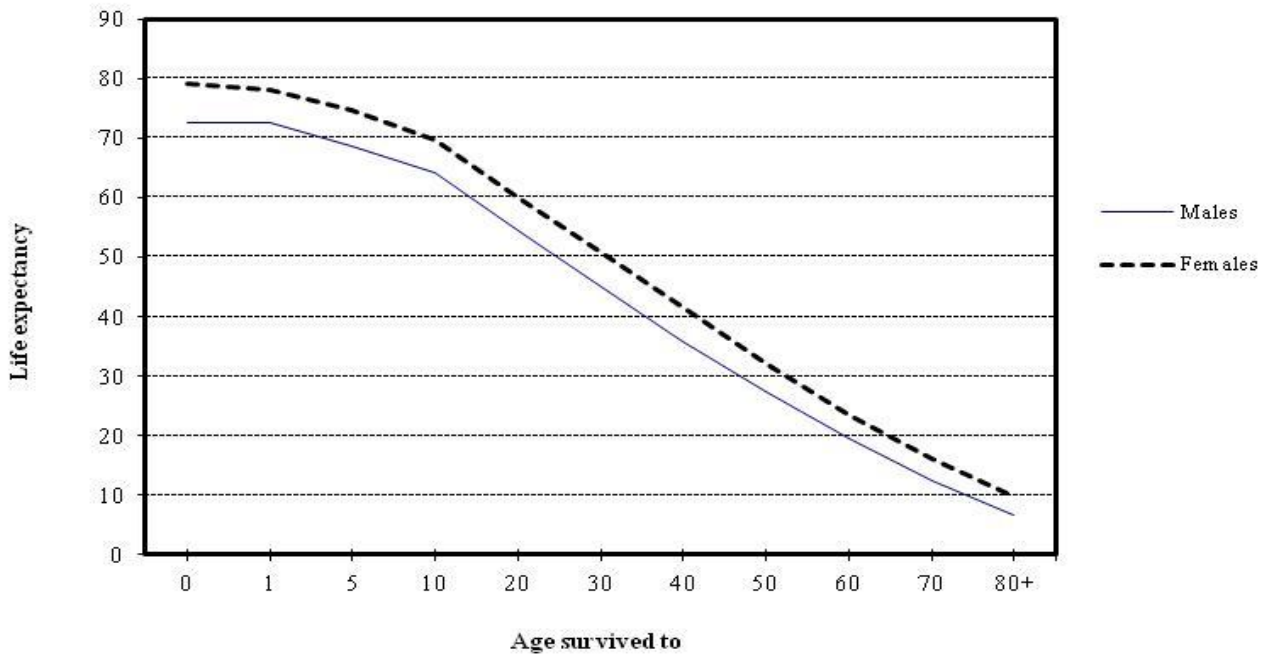
<sup>1</sup> Rate per 1,000 population 5 year moving average. Based on 2008 Census population.

### 2.5 Death rate per 1000 population by age and gender 2008 - 2012



Source: Statistics Office, CPPU

### 2.6 Expectation of life by age and gender 2000 - 2009



Source: Statistics Office, CPPU

## 2 Population and vital statistics

### 2.6 Life tables

2000 - 2009

Age	$l^1$			$e^2$		
	Males	Females	Total	Males	Females	Total
0	10,000	10,000	10,000	72.5	79.2	76.4
1	9,834	10,000	9,934	72.7	78.2	75.9
5	9,834	9,936	9,905	68.7	74.7	72.1
10	9,770	9,936	9,880	64.2	69.7	67.3
20	9,726	9,891	9,842	54.4	60.0	57.5
30	9,646	9,743	9,749	44.9	50.9	48.0
40	9,399	9,615	9,583	35.9	41.5	38.8
50	8,963	9,485	9,299	27.4	32.0	29.8
60	8,209	8,967	8,684	19.5	23.5	21.6
70	6,850	7,904	7,406	12.3	16.0	14.4
80	4,350	5,945	5,112	6.6	9.7	8.7

Source: Statistics Office, CPPU

NB: The methodology for life expectancy is under review. Until this is finalised life expectancy will not be calculated outside of Census years.

<sup>1</sup>  $l$  is the number who would survive to the age shown, out of 10,000 born, if they were subject throughout their lives to the death rates experienced in the years 2000-2009.

<sup>2</sup>  $e$  is the expectation of life of a person at the given age providing they were subject to the death rates prevalent between 2000 -2009.