

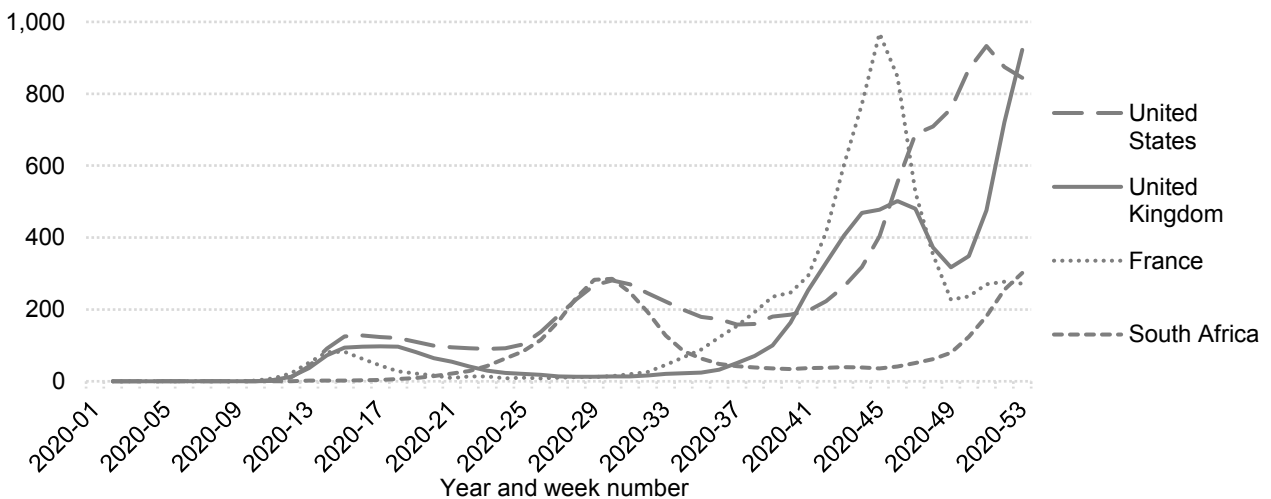
This is a regular weekly update to the classification of countries based on their current 14-day COVID-19 reported cumulative case prevalence rate published by the European Centre for Disease Prevention and Control (ECDC), and the latest quarantine status issued by the UK Government.

- GOLD:** No reported cases in last 14 days and exempt from UK quarantine
- GREEN:** 14-day reported cumulative case prevalence higher than zero but less than the medium threshold (0.04%) and exempt from UK quarantine
- AMBER:** 14-day reported cumulative case prevalence above the medium threshold (0.04%) but less than the high threshold (0.10%) or countries who are below the medium threshold but not exempt from UK quarantine
- RED:** All countries with 14-day reported cumulative case prevalence above the high threshold (0.10%)
- Not classified:** Countries not exempt from UK quarantine but with no reported cases, and countries whose data are not reported by ECDC
- Note:** Cases reported on Ascension or the Falkland Islands will only be included in prevalence rates if they are detected outside of quarantine

### Classification changes since the last update on December 21, 2020:

Lao PDR	Green	to →	Gold
Sri Lanka, Iceland	Amber	to →	Green
Mexico, Finland, Libya, Botswana, Morocco, Cape Verde, Guam, Greece	Red	to →	Amber
Barbados, Cayman Islands	Green	to →	Amber
Suriname, Bolivia, Eswatini, Bonaire, St Eustatius and Saba, Faroe Islands, Ireland, Namibia	Amber	to →	Red

### 14-day reported case prevalence rates per 100,000 population, selected countries:



This Update is produced by the St Helena Statistics Office. For full details of the methodology and data sources, please see <https://www.sainthelena.gov.sh/stats-bulletin-8-covid-19>.

Country	Population	14-day case prevalence, per 100,000	Classification (* would be classed at lower risk level if UK quarantine restrictions were lifted)
Ascension	806	0.0	Gold
Falkland Islands	3,483	0.0	Gold
Lao PDR	7,275,556	0.0	Gold
Montserrat	4,999	0.0	Gold
Solomon Islands	686,878	0.0	Gold
St Helena	4,577	0.0	Gold
Tristan da Cunha	248	0.0	Gold
Vanuatu	307,150	0.0	Gold
Vietnam	97,338,583	0.1	Green
Cambodia	16,718,971	0.1	Green
Taiwan	23,816,775	0.2	Green
Fiji	896,444	0.3	Green
East Timor	1,318,442	1.0	Green
New Caledonia	285,491	1.1	Green
Australia	25,499,881	1.2	Green
Brunei	437,483	4.6	Green
Singapore	5,850,343	4.7	Green
Thailand	69,799,978	5.1	Green
St Kitts and Nevis	53,192	5.6	Green
Saudi Arabia	34,813,867	6.2	Green
Antigua and Barbuda	97,928	7.1	Green
Isle of Man	85,032	8.2	Green
Mongolia	3,278,292	8.9	Green
Northern Mariana Islands	57,557	10.4	Green
Rwanda	12,952,209	10.7	Green
Guernsey	64,468	10.9	Green
Greenland	56,772	14.1	Green
Grenada	112,519	24.0	Green
Republic of Korea	51,269,183	26.7	Green
Iceland	356,991	31.4	Green
Bhutan	771,612	32.3	Green
Anguilla	15,002	33.3	Green
Sri Lanka	21,413,250	35.1	Green
Japan	126,476,458	35.8	Green
St Lucia	183,629	35.9	Green
British Virgin Islands	30,237	36.4	Green
Yemen	29,825,968	0.1	Amber*
China	1,439,323,774	0.1	Amber*
Liberia	5,057,677	0.2	Amber*
Somalia	15,893,219	0.3	Amber*
Mauritius	1,271,767	0.4	Amber*
Papua New Guinea	8,947,027	0.4	Amber*
Madagascar	27,691,019	0.5	Amber*
Central African Republic	4,829,764	0.5	Amber*
Burundi	11,890,781	0.6	Amber*
Benin	12,123,198	0.7	Amber*
Gambia	2,416,664	0.7	Amber*
Sudan	43,849,269	1.1	Amber*
Nicaragua	6,624,554	1.6	Amber*

Country	Population	14-day case prevalence, per 100,000	Classification (* would be classed at lower risk level if UK quarantine restrictions were lifted)
Guinea	13,132,792	1.9	Amber*
Chad	16,425,859	2.0	Amber*
Sierra Leone	7,976,985	2.1	Amber*
Congo, Democratic Republic of	89,561,404	2.6	Amber*
Cote d'Ivoire	26,378,275	2.8	Amber*
Angola	32,866,268	3.0	Amber*
Haiti	11,402,533	3.1	Amber*
South Sudan	11,193,729	3.2	Amber*
Niger	24,206,636	3.3	Amber*
Equatorial Guinea	1,402,985	3.4	Amber*
Togo	8,278,737	3.5	Amber*
Tajikistan	9,537,642	3.6	Amber*
Malawi	19,129,955	3.6	Amber*
Uzbekistan	33,469,199	3.6	Amber*
Cameroon	26,545,864	3.8	Amber*
Kenya	53,771,300	4.3	Amber*
Ghana	31,072,945	4.9	Amber*
Ethiopia	114,963,583	4.9	Amber*
Mali	20,250,834	5.2	Amber*
Sao Tome and Principe	219,161	5.5	Amber*
Mozambique	31,255,435	5.6	Amber*
Nigeria	206,139,587	5.6	Amber*
Djibouti	988,002	6.2	Amber*
Afghanistan	38,928,341	7.4	Amber*
Gabon	2,225,728	8.3	Amber*
Syria	17,500,657	8.7	Amber*
Burkina Faso	20,903,278	9.0	Amber*
Bangladesh	164,689,383	9.3	Amber*
Uganda	45,741,000	10.6	Amber*
Trinidad and Tobago	1,399,491	11.1	Amber*
Algeria	43,851,043	11.9	Amber*
Senegal	16,743,930	12.2	Amber*
Pakistan	220,892,331	13.4	Amber*
Venezuela	28,435,943	15.2	Amber*
Eritrea	3,546,427	15.7	Amber*
Egypt	102,334,403	16.3	Amber*
Congo	5,518,092	16.4	Amber*
Philippines	109,581,085	16.4	Amber*
Zambia	18,383,956	17.8	Amber*
Myanmar	54,409,794	18.8	Amber*
Zimbabwe	14,862,927	19.6	Amber*
India	1,380,004,385	20.6	Amber*
Comoros	869,595	22.8	Amber*
Guyana	786,559	23.8	Amber*
Jamaica	2,961,161	25.7	Amber*
Nepal	29,136,808	27.8	Amber*
Guatemala	17,915,567	28.2	Amber*
Lesotho	2,142,252	30.8	Amber*
Kyrgyzstan	6,524,191	32.7	Amber*

Country	Population	14-day case prevalence, per 100,000	Classification (* would be classed at lower risk level if UK quarantine restrictions were lifted)
Indonesia	273,523,621	34.2	Amber*
Iraq	40,222,503	35.4	Amber*
Oman	5,106,622	37.5	Amber*
Bahamas	393,248	40.4	Amber
Ecuador	17,643,060	47.0	Amber
Cayman Islands	65,720	47.2	Amber
Mauritania	4,649,660	51.1	Amber
El Salvador	6,486,201	51.1	Amber
Cape Verde	555,988	61.3	Amber
Honduras	9,904,608	64.1	Amber
Finland	5,517,919	68.1	Amber
Peru	32,971,846	68.5	Amber
Guam	168,783	68.7	Amber
Maldives	540,542	69.2	Amber
Morocco	36,910,558	70.5	Amber
Botswana	2,351,625	74.5	Amber
Kuwait	4,270,563	78.8	Amber
Kazakhstan	18,776,707	82.1	Amber
Greece	10,724,599	84.2	Amber
Malaysia	32,365,998	85.0	Amber
Qatar	2,881,060	91.7	Amber
Mexico	128,932,753	95.3	Amber
Libya	6,871,287	98.6	Amber
Barbados	287,371	98.8	Amber
Bolivia	11,673,029	105.2	Red
Iran	83,992,953	108.8	Red
Dominican Republic	10,847,904	113.2	Red
Paraguay	7,132,530	118.6	Red
US Virgin Islands	104,423	128.3	Red
Suriname	586,634	138.1	Red
Norway	5,328,212	149.0	Red
Faroe Islands	48,865	151.4	Red
Kosovo	1,798,506	155.5	Red
Chile	19,116,209	160.6	Red
Bulgaria	7,000,039	169.4	Red
Belgium	11,455,519	174.1	Red
Azerbaijan	10,139,175	179.3	Red
Tunisia	11,818,618	184.7	Red
Bahrain	1,701,583	187.8	Red
Belize	397,621	190.1	Red
Jordan	10,203,140	203.5	Red
Argentina	45,195,777	207.1	Red
Armenia	2,963,234	207.7	Red
Curacao	164,100	209.0	Red
Uruguay	3,473,727	211.5	Red
United Arab Emirates	9,890,400	213.9	Red
Eswatini	1,160,164	216.9	Red
Bosnia and Herzegovina	3,280,815	217.0	Red
Brazil	212,559,409	221.2	Red

Country	Population	14-day case prevalence, per 100,000	Classification (* would be classed at lower risk level if UK quarantine restrictions were lifted)
Albania	2,862,427	224.8	Red
Canada	37,742,157	228.8	Red
Ukraine	43,733,759	235.7	Red
Bonaire, Sint Eustatius and Saba	26,221	236.5	Red
Hungary	9,772,756	242.7	Red
Costa Rica	5,094,114	246.2	Red
Romania	19,414,458	253.1	Red
Namibia	2,540,916	262.6	Red
Moldova	4,033,963	264.4	Red
French Polynesia	280,904	264.9	Red
France	67,012,883	272.1	Red
North Macedonia	2,077,132	275.3	Red
Malta	493,559	277.2	Red
Turkey	82,003,882	277.7	Red
Belarus	9,449,321	279.8	Red
Sint Maarten	42,882	289.2	Red
Turks and Caicos	38,718	289.3	Red
Spain	46,937,060	297.4	Red
South Africa	59,308,690	301.5	Red
Colombia	50,882,884	310.0	Red
Poland	37,972,812	316.7	Red
Germany	83,019,213	319.0	Red
Austria	8,858,775	320.0	Red
Italy	60,359,546	335.1	Red
Russia	145,934,460	340.9	Red
Aruba	106,766	363.4	Red
Palestine	5,101,416	392.0	Red
Croatia	4,076,246	422.7	Red
Jersey	107,796	449.9	Red
Ireland	4,904,240	455.6	Red
Lebanon	6,825,442	456.7	Red
Luxembourg	613,894	464.6	Red
Georgia	3,989,175	508.9	Red
Portugal	10,276,617	517.0	Red
Monaco	33,085	541.0	Red
Serbia	6,963,764	576.2	Red
Estonia	1,324,820	583.2	Red
Denmark	5,806,081	590.4	Red
Slovakia	5,450,421	674.5	Red
Cyprus	875,899	717.7	Red
Puerto Rico	2,860,840	739.4	Red
Netherlands	17,282,163	759.7	Red
Israel	8,655,541	760.5	Red
Sweden	10,230,185	785.1	Red
Andorra	76,177	807.3	Red
Montenegro	622,182	842.2	Red
United States of America	331,002,647	844.5	Red
Switzerland	8,544,527	848.1	Red
Panama	4,314,768	920.0	Red

<b>Country</b>	<b>Population</b>	<b>14-day case prevalence, per 100,000</b>	<b>Classification</b> (* would be classed at lower risk level if UK quarantine restrictions were lifted)
United Kingdom	66,647,112	922.2	Red
Slovenia	2,080,908	959.1	Red
Liechtenstein	38,378	1,024.0	Red
Czech Republic	10,649,800	1,119.2	Red
San Marino	34,453	1,120.4	Red
Lithuania	2,794,184	1,199.3	Red
Gibraltar	33,691	3,449.0	Red
Guinea-Bissau	1,967,998	0.0	Not classified
Marshall Islands	59,194	0.0	Not classified
Tanzania	59,734,213	0.0	Not classified
Vatican City	809	0.0	Not classified
Western Sahara	597,330	0.0	Not classified
American Samoa	55,312	No data	Not classified
Hong Kong SAR, China	7,507,400	No data	Not classified
Kiribati	117,606	No data	Not classified
Korea, Dem. People's Rep.	25,666,161	No data	Not classified
Macao SAR, China	640,445	No data	Not classified
Micronesia, Fed. Sts.	113,815	No data	Not classified
Nauru	12,581	No data	Not classified
Palau	18,008	No data	Not classified
Samoa	197,097	No data	Not classified
St. Martin (French part)	38,002	No data	Not classified
Tonga	104,494	No data	Not classified
Turkmenistan	5,942,089	No data	Not classified