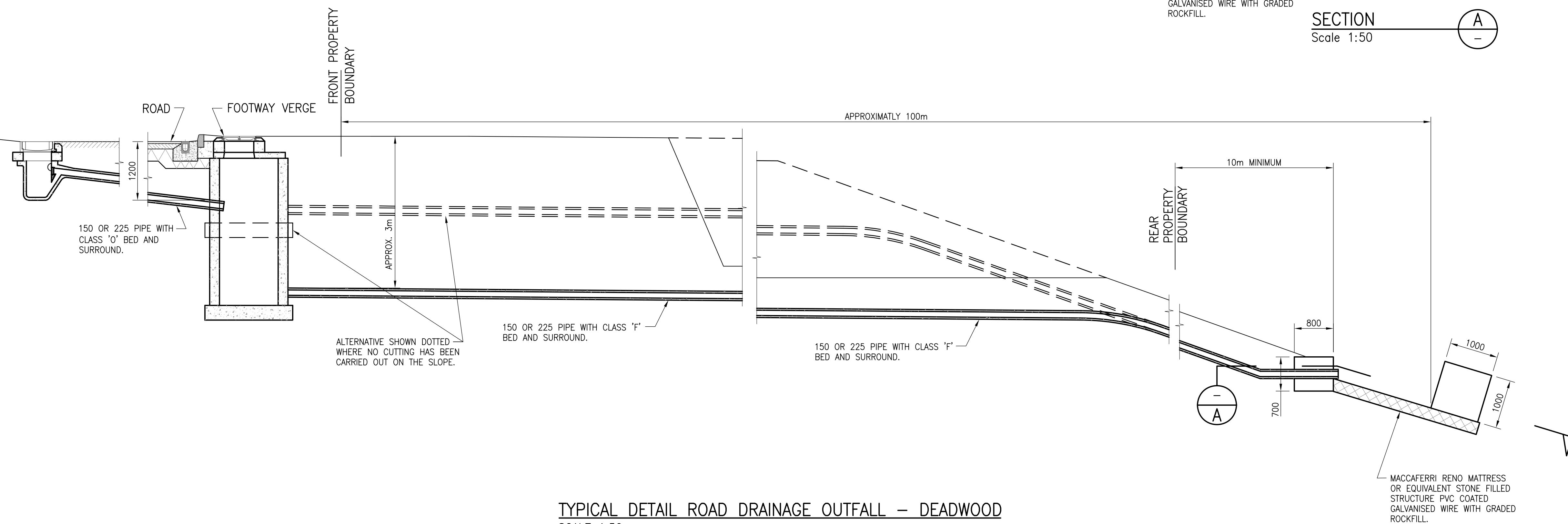
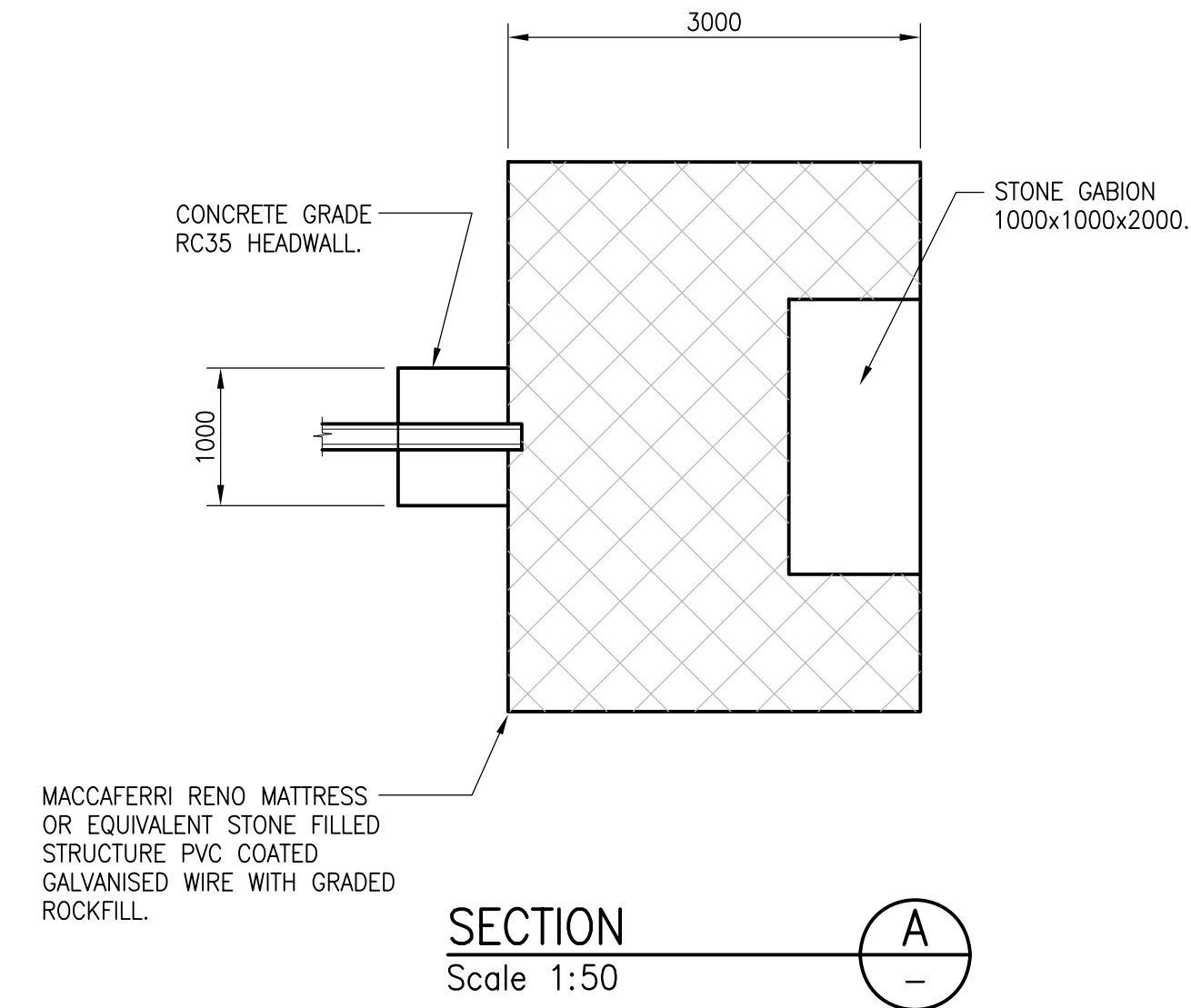


DO NOT SCALE

COMMERCIAL IN CONFIDENCE

NOTES:

- DIMENSIONS ARE IN MILLIMETERS UNLESS OTHERWISE STATED.
- REFERENCE DESIGN DRAWINGS TO BE READ IN CONJUNCTION WITH EMPLOYER'S REQUIREMENTS AND REFERENCE DESIGN SPECIFICATIONS.
- CO-ORDINATES ARE TO ST HELENA LOCAL GRID.
- LAND LEVELS ARE IN METRES RELATIVE TO MEAN SEA LEVEL.
- SPECIFIED PRODUCTS SHALL BE OR EQUAL APPROVED.
- CONCRETE GRADES TO BS8500
REINFORCED CONCRETE GRADE: RC40
MASS CONCRETE GRADE: GEN3
BLINDING CONCRETE GRADE: GEN1
- HIGH YIELD REINFORCEMENT WITH YIELD STRENGTH OF 460N/mm².
- FOR MANHOLE AND PIPE BEDDING DETAILS SEE DRAWING No. 5048976-CI-01-2050 TO 2052
- DEPTH OF COVER TO PIPES IS TO BE 1200 MIN IN TRAFFICKED AREAS AND 700 MIN ELSEWHERE.



TYPICAL DETAIL ROAD DRAINAGE OUTFALL - DEADWOOD
SCALE 1:50

Rev.	Description	By	Date	Chk'd	Auth
A	TENDER ISSUE	KT	25.07	TJM	RDJ
-	Preliminary	-	21.2.07	RDJ	

Client
DFID

Consultant
Atkins Limited 
Consulting Engineers,
Woodcote Grove,
Ashley Road,
Epsom, Surrey, England, KT18 5BW
www: <http://www.atkinsglobal.com>
Fax (01372) 740055
Tel. (01372) 726140

Project
St Helena Reference Design

Title
Detail of Road Drainage Outfall - Deadwood
Section & Details

Scale at A1	Drawn	Checked	Authorised	Status
1:50	RH			T

Drawing Number	Rev
5048976 - CI - 01 - 1502	A

