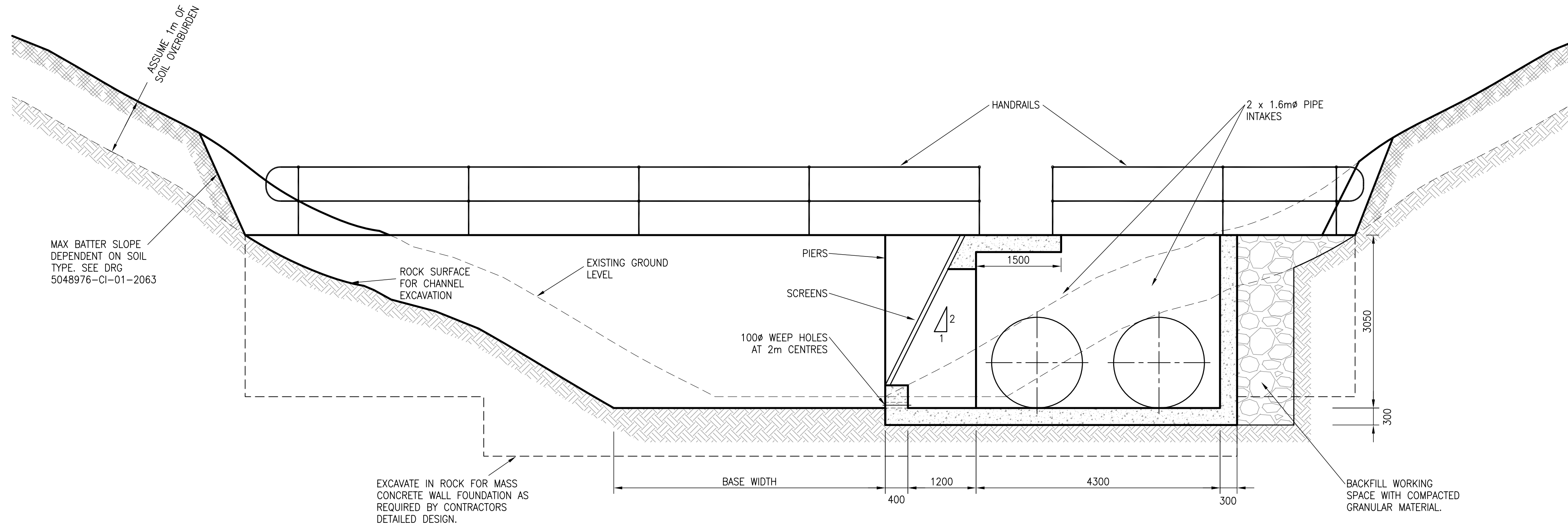


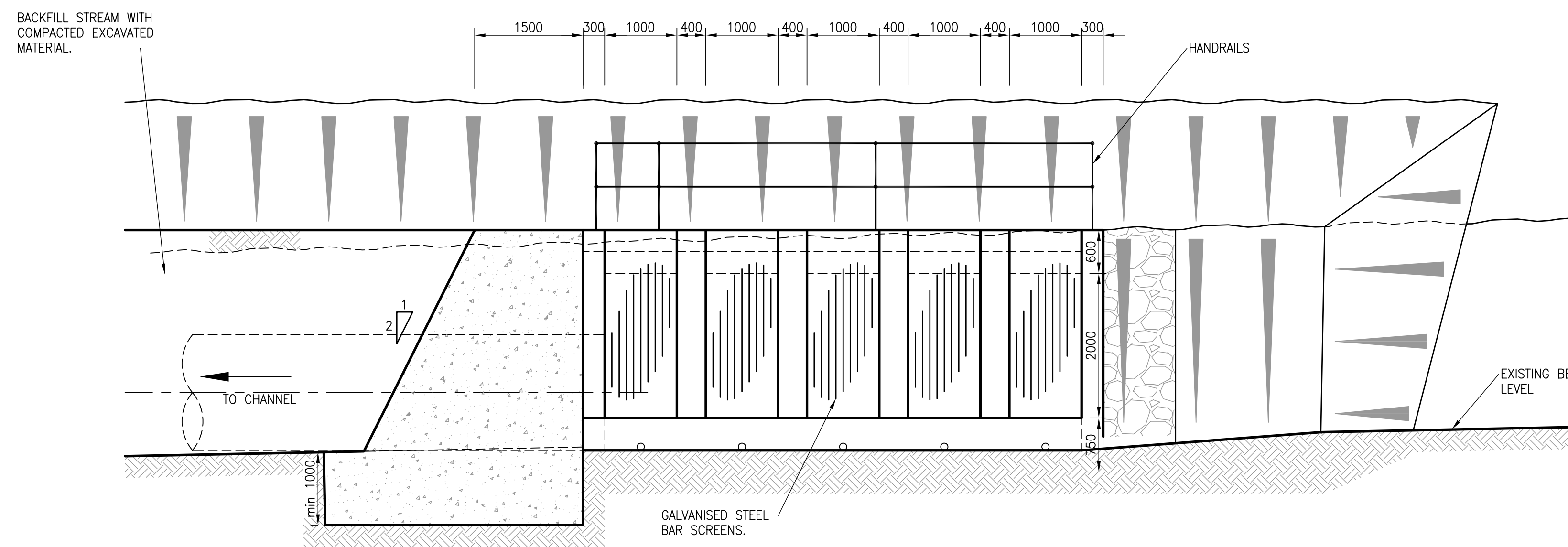
DO NOT SCALE

COMMERCIAL IN CONFIDENCE

1. DIMENSIONS ARE IN MILLIMETERS UNLESS OTHERWISE STATED.
2. REFERENCE DESIGN DRAWINGS TO BE READ IN CONJUNCTION WITH EMPLOYER'S REQUIREMENTS AND REFERENCE DESIGN SPECIFICATIONS.
3. BACKGROUND SURVEY MAPPING BASED ON ORDNANCE SURVEY MAPPING SERIES G893 (D.O.S 260) SHEETS 3 & 6 AND TRITAN SURVEY 2006.
4. CO-ORDINATES ARE TO ST HELENA LOCAL GRID.
5. LAND LEVELS ARE RELATIVE TO MEAN SEA LEVEL.
6. SPECIFIED PRODUCTS SHALL BE OR EQUAL APPROVED.
7. CONCRETE GRADES TO BS8500
 REINFORCED CONCRETE GRADE: RC40
 MASS CONCRETE GRADE: GEN3
 BLINDING CONCRETE GRADE: GEN1
8. HIGH YIELD REINFORCEMENT WITH YIELD STRENGTH OF 460N/mm².
9. REINFORCEMENT DENSITY OF 260kg/m³.
10. FOR LAYOUTS SEE DRAWINGS: 5048976-CI-01-1011 to 1020.



SECTION A Scale 1:50



SECTION B Scale 1:50

Rev.	Description	By	Date	Chk'd	Auth
Tender		B	2.5.07		RDJ
REVIEW & PRICING		-	26/01/07		RDJ
Code	Purpose of issue	Rev	Date	Authorised	

Client

DFID

Consultant
Atkins Limited
 Consulting Engineers,
 Woodcote Grove,
 Ashley Road,
 Epsom, Surrey, England,
 KT18 5BW
 www: <http://www.atkinsglobal.com>
 Fax (01372) 740055
 Tel. (01372) 726140

Project
 St Helena Reference Design

Title
 Airfield Drainage
 Main Stream Diversion
 Structure Details Sections
 Sheet 2 of 2

Scale at A1	Drawn	Checked	Authorised	Status
1:50	WMS	JW	RDJ	T
	Date 26/01/07	Date 26/01/07	Date 26/01/07	
Drawing Number	Rev			
5048976 - CI - 01 - 1076	B			

