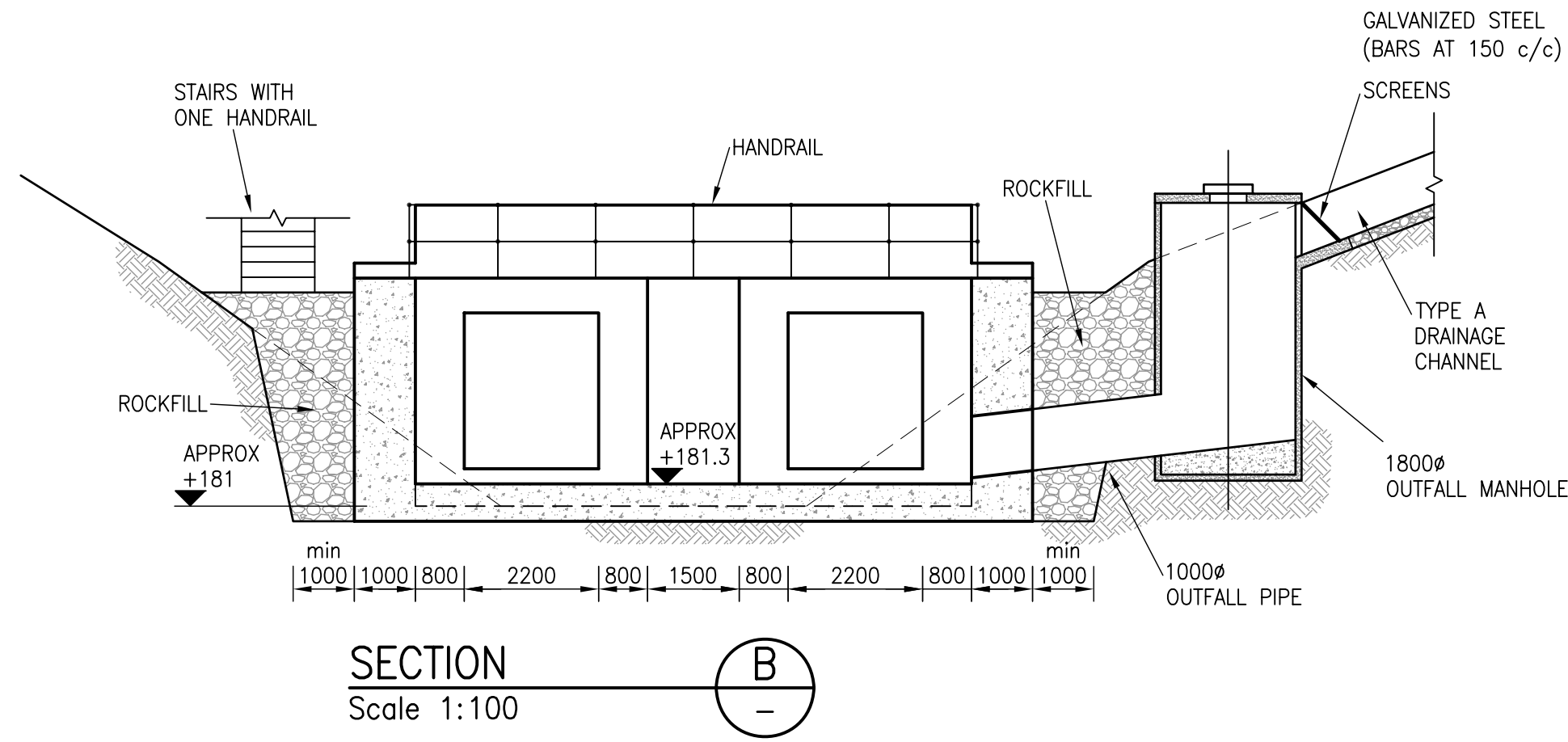
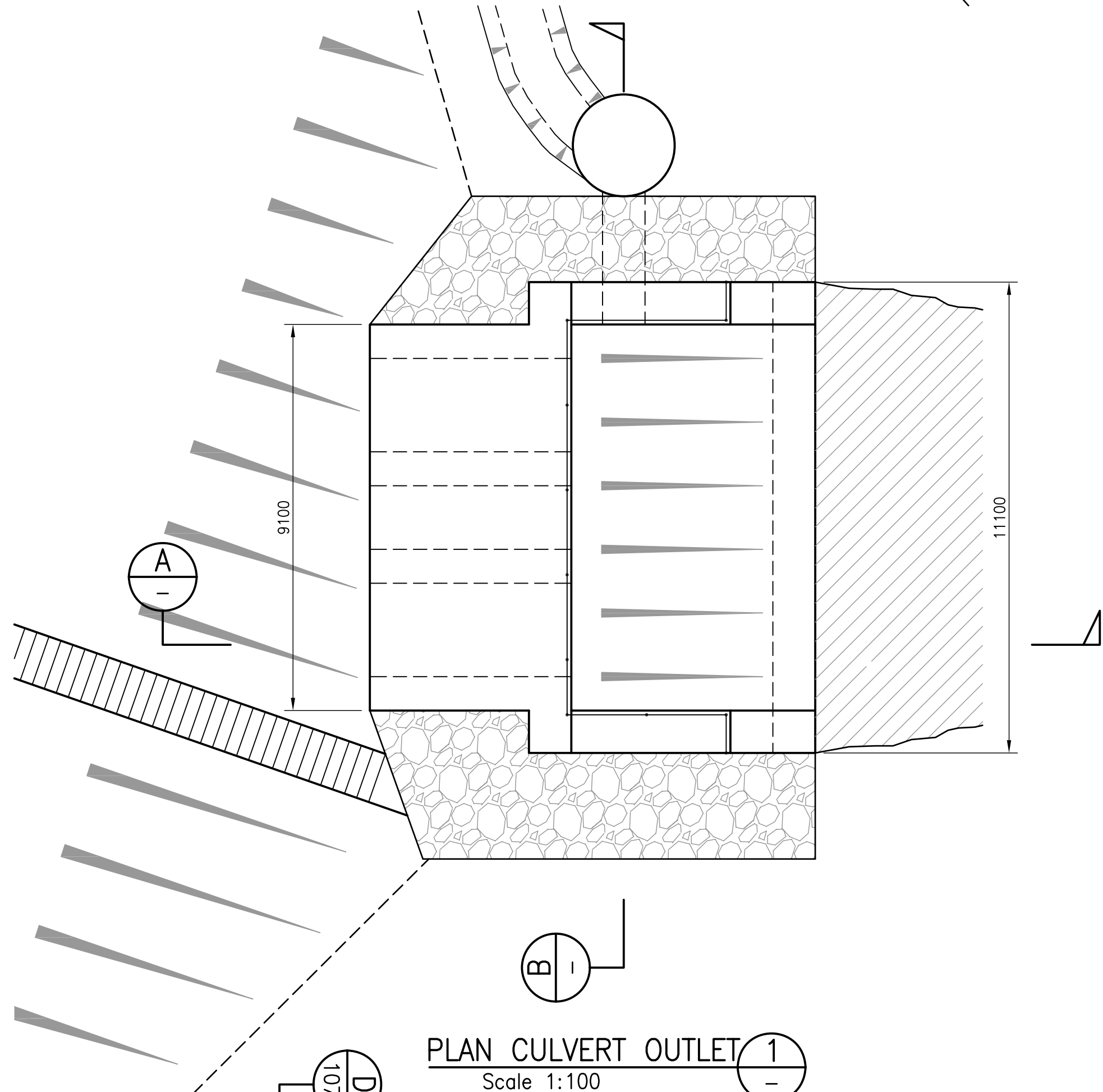


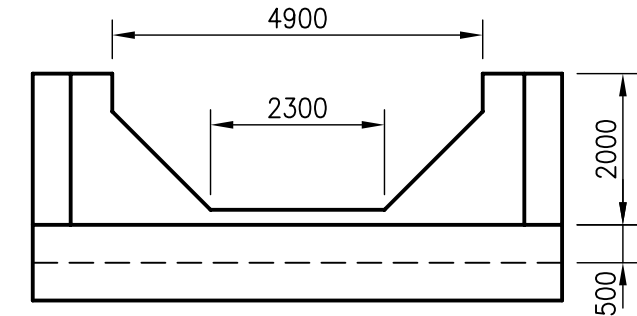
SECTION A  
Scale 1:100



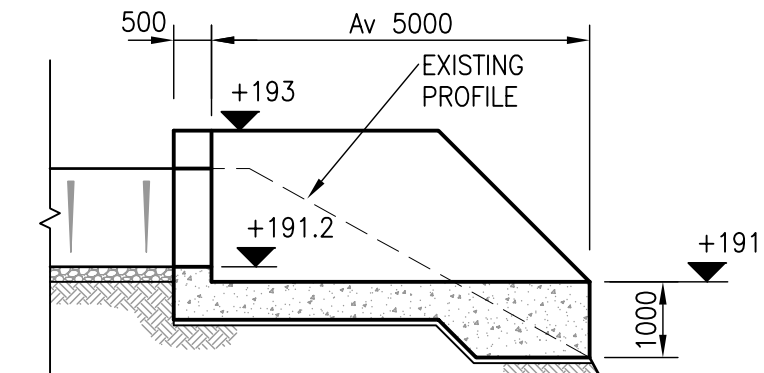
SECTION B  
Scale 1:100



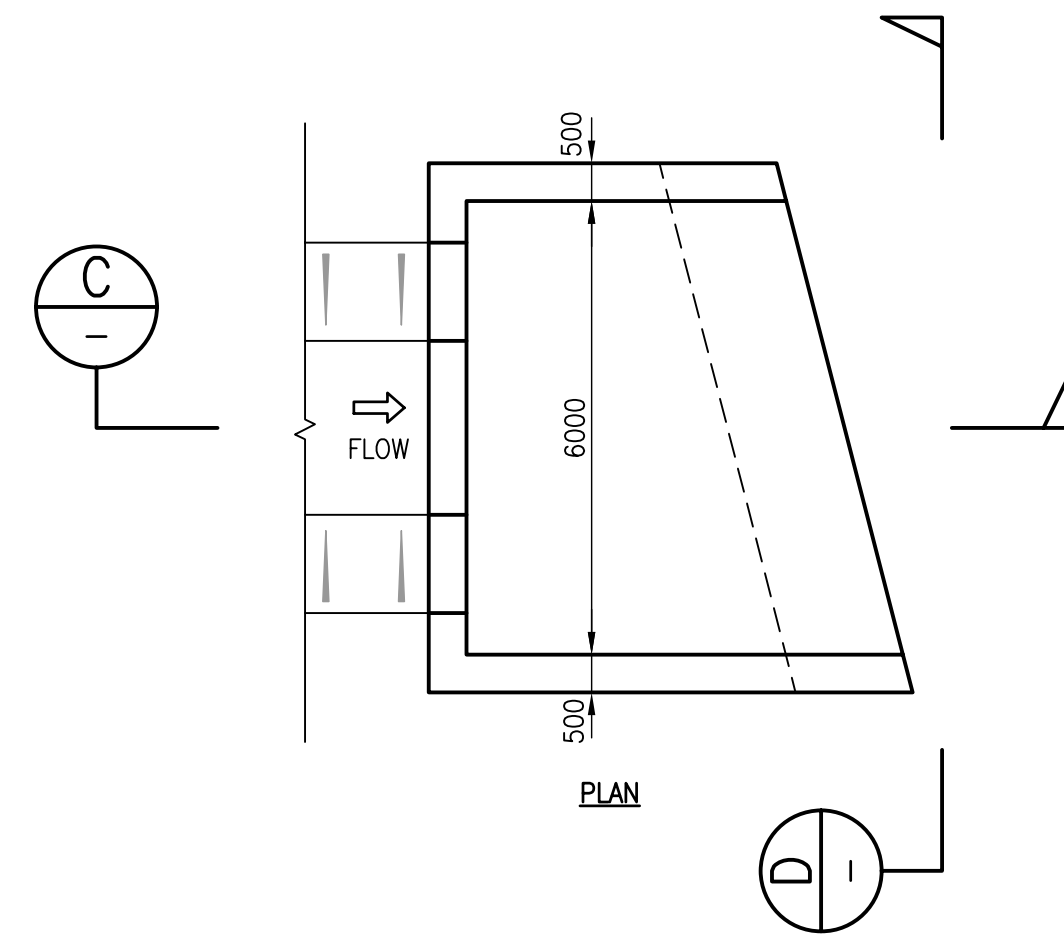
PLAN CULVERT OUTLET  
Scale 1:100



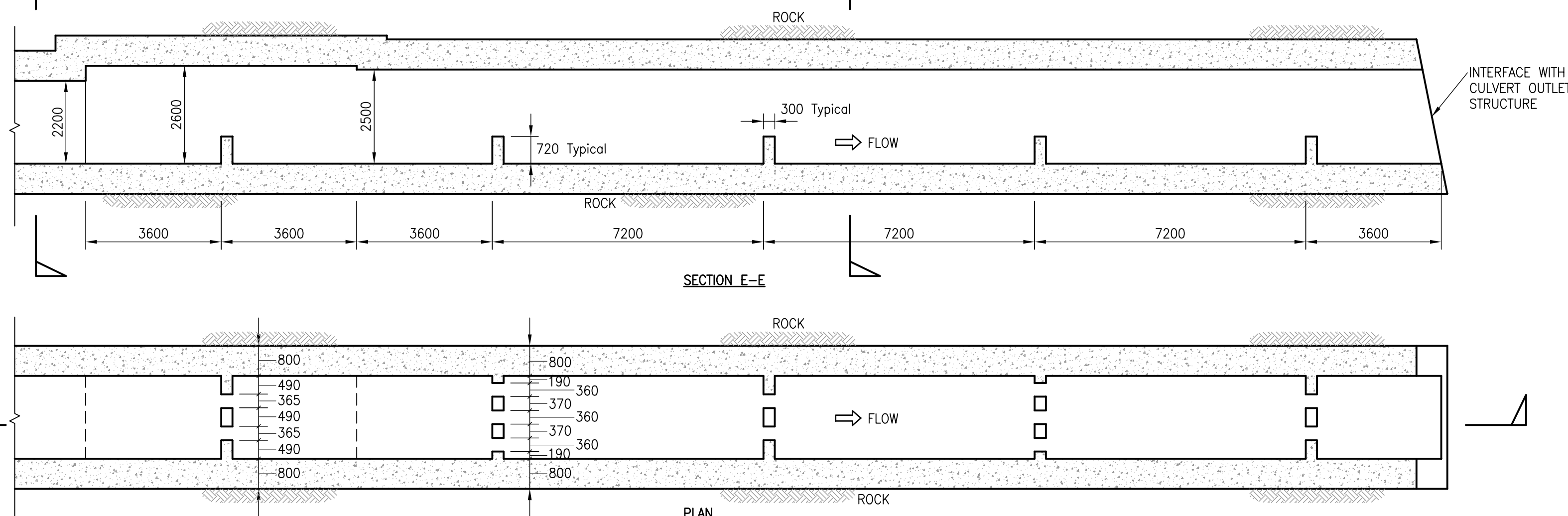
ELEVATION D-D



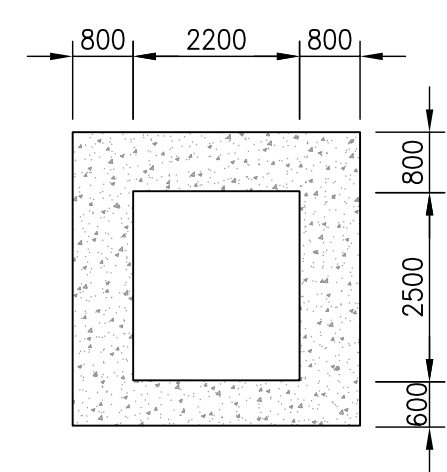
SECTION C-C



CHANNEL OUTLET STRUCTURE  
SCALE 1:100



ENERGY DISSIPATOR APPROACHING CULVERT OUTLET  
SCALE 1:100



SECTION F-F



DO NOT SCALE

COMMERCIAL IN CONFIDENCE

- NOTES**
- DIMENSIONS ARE IN MILLIMETERS UNLESS OTHERWISE STATED.
  - REFERENCE DESIGN DRAWINGS TO BE READ IN CONJUNCTION WITH EMPLOYER'S REQUIREMENTS AND REFERENCE DESIGN SPECIFICATIONS.
  - BACKGROUND SURVEY MAPPING BASED ON ORDNANCE SURVEY MAPPING SERIES G893 (D.O.S 260) SHEETS 3 & 6 AND TRITAN SURVEY 2006.
  - CO-ORDINATES ARE TO ST HELENA LOCAL GRID.
  - LAND LEVELS ARE RELATIVE TO MEAN SEA LEVEL.
  - SPECIFIED PRODUCTS SHALL BE OR EQUAL APPROVED.
  - CONCRETE GRADES TO BS8500  
REINFORCED CONCRETE GRADE: RC40  
MASS CONCRETE GRADE: GEN3  
BLINDING CONCRETE GRADE: GEN1
  - HIGH YIELD REINFORCEMENT WITH YIELD STRENGTH OF 460N/mm<sup>2</sup>.
  - REINFORCEMENT DENSITY OF 260kg/m<sup>3</sup>.
  - JOINTS IN CULVERT AT 15m CENTRES
  - ASSUMED BEARING CAPACITY OF 5000 kN/m<sup>2</sup> FOR ROCK IN RIVER BED.
  - FOR LAYOUTS SEE DRAWINGS: 5048976-CI-01-1011 to 1020
  - FOR MANHOLE DETAILS SEE DRAWINGS 5048976-CI-01-2052

Rev.	Description	By	Date	Chk'd	Auth
B	TENDER ISSUE	KT	25.07	TJM	RDJ
A	OUTLET REDESIGNED DETAILS ADDED	WMS	12.3.07	JAW	RDJ
Tender					
		B	25.07		RDJ
Review & Pricing					
		-	26.1.07		RDJ
Code	Purpose of issue	Rev	Date	Authorised	

**Client**

**DFID**

**Consultant**  
**Atkins Limited**   
 Consulting Engineers,  
 Woodcote Grove,  
 Ashley Road,  
 Epsom, Surrey, England,  
 KT18 5BW  
 www: <http://www.atkinsglobal.com>  
 Fax (01372) 740055  
 Tel. (01372) 726140

**Project**

**St Helena Reference Design**

**Title**

Culvert Outlet Structure, Energy Dissipator and Channel Outlet Structure Details

Scale at A1	Drawn	Checked	Authorised	Status
As Shown	BnH	JW	RDJ	T
Drawing Number	Date	Date	Date	Rev
5048976 - CI - 01 - 1072	26.01.07	26.01.07	26.01.07	B