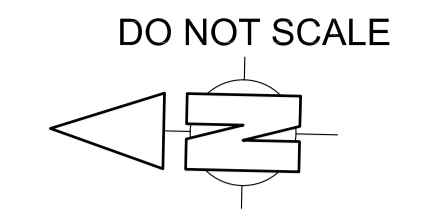
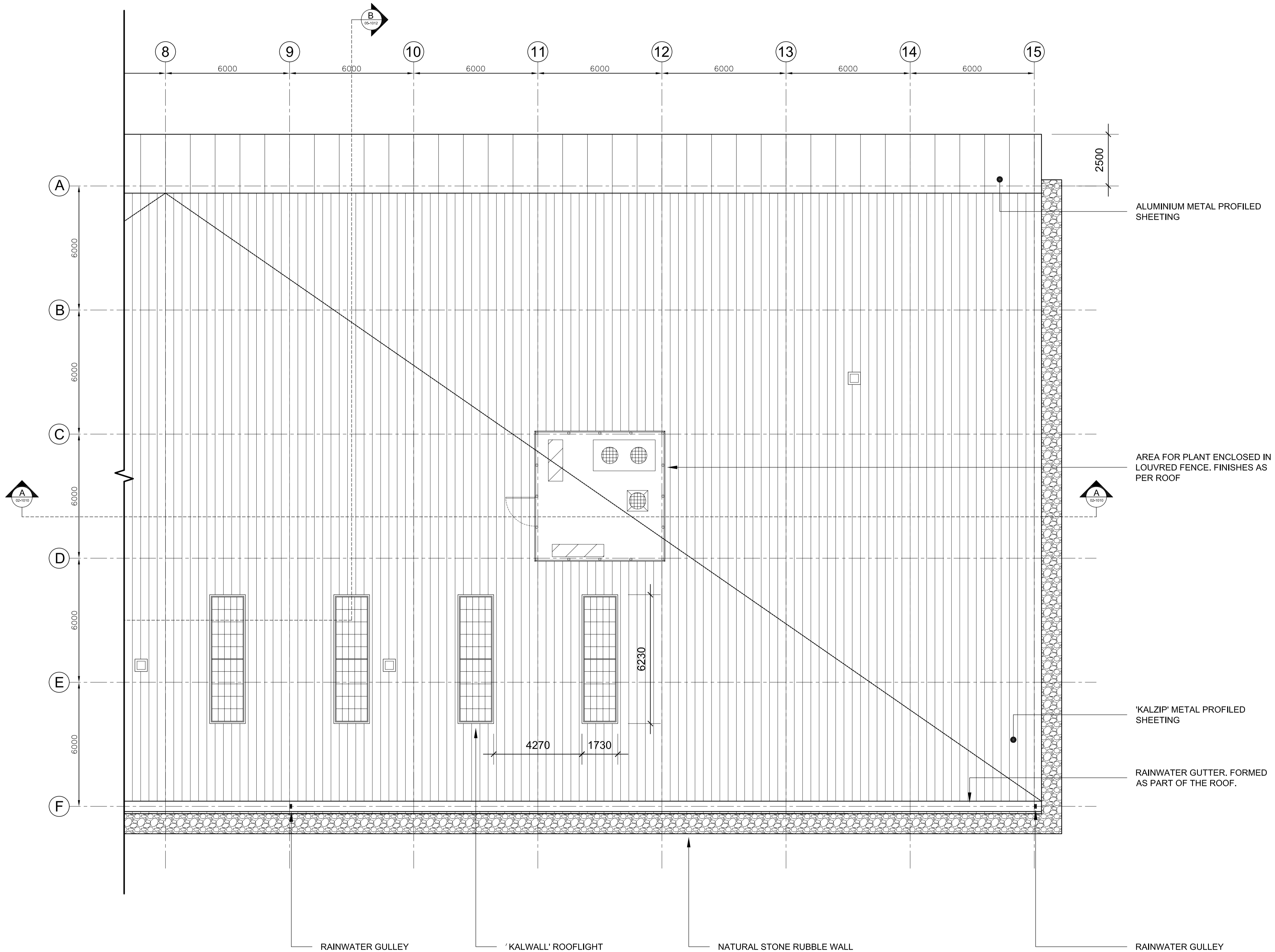
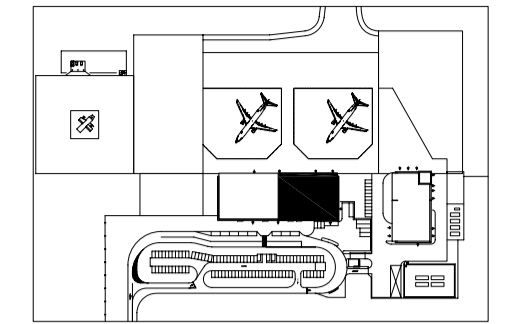


SEE DRW 5048976-AR-02-1005
FOR OTHER HALF OF PLAN



COMMERCIAL IN CONFIDENCE

1. REFERENCE DESIGN DRAWING TO BE READ IN CONJUNCTION WITH EMPLOYERS REQUIREMENTS, REFERENCE DESIGN SPECIFICATIONS AND ALL OTHER ARCHITECTURAL DRAWINGS
2. REFERENCE DESIGN DRAWING FOR PRICING PURPOSES ONLY
3. SPECIFIED PRODUCTS SHALL BE EQUAL OR APPROVED



Rev.	Description	By	Date	Chk'd	Auth
C	MINOR REVISION	MAC	21/02/07	MJW	RDJ
B	ADDED DRAINAGE-POINTS FOR RAIN-WATER. LOUVRED ENCLOSURE FOR PLANT	MAC	26/01/07	GH	RDJ
T	TENDER	C	21/02/07		RDJ
R	PRICING & REVIEW	A	12/01/07		RDJ
I	INFORMATION	-	16/11/06		RDJ

Client
DFID

Consultant
Atkins Limited
Consulting Engineers,
Woodcote Grove,
Ashley Road,
Epsom, Surrey, England,
KT18 5BW
www : <http://www.atkinsglobal.com>
Fax (01372) 740055
Tel. (01372) 726140

Project
St Helena Reference Design

Title
**TERMINAL
General Arrangement
Roof Plan
2 of 2**

Scale at A1	Drawn	Checked	Authorised	Status
1:100	GH	MC	RDJ	T

Drawing Number	Rev
5048976 - AR - 02 - 1006	C

