



Statistical News Bulletin

Volume 1
Issue 4
December 2011

Statistics

The practice or science of collecting and analysing numerical data.

RETAIL PRICE INDEX

The Retail Price Index (RPI) is designed to measure the price changes in a fixed basket of goods and services commonly purchased by households. The RPI is the most familiar general purpose domestic measure of inflation as it represents the cost of the 'Shopping Basket' of goods and services of a typical; or average St Helenian Household.

Inflation at the end of quarter 4 of 2011 stands at 9.7%. The price increases and decreases were balanced, therefore, inflation did not change over the quarter.

The main components in which price rises occurred were 'Alcohol & Tobacco' & 'Household Goods', while decreases occurred in 'Food', 'Fuel & Light' and 'Transport'.

External Inflation:

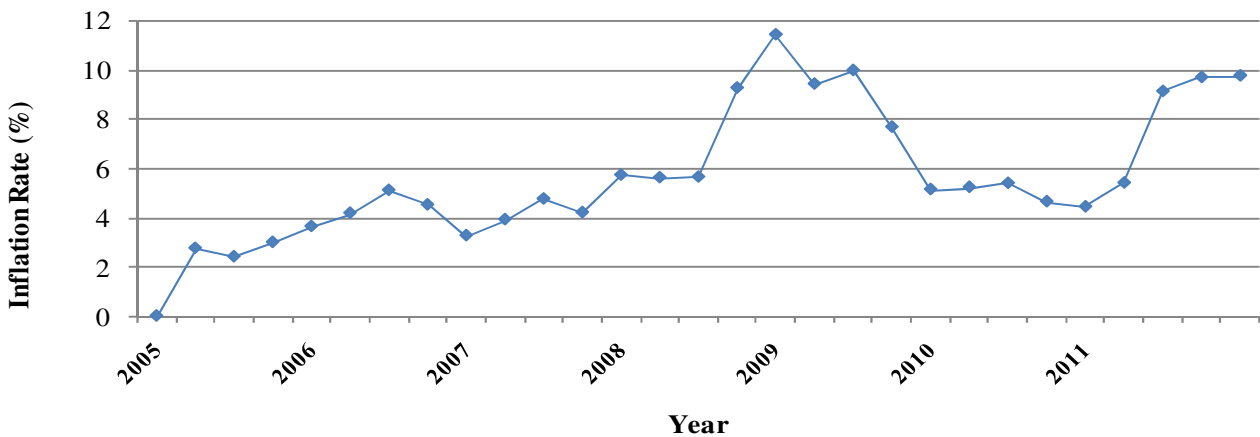
UK inflation (RPI) for October 2011 - 5.4%

SA inflation (CPI) for October 2011 - 6.0%

The Rand at the end of November 2011 was 14.1 to the pound

Because of the island's high import dependency, inflation is influenced by the rate of inflation in the United Kingdom and South Africa.

St Helena Inflation 2005 - 2011



We wish all our readers a very Merry Christmas

and a

Healthy and Prosperous New Year



Statistical News Bulletin

SOME INTERESTING COMPARISONS:

	<u>Qtr 3 2010</u>	<u>Qtr 3 2011</u>
<u>Births, Deaths & Marriages:</u>		
Births	11	14
Deaths	16	14
Marriages	1	1
<u>Road Traffic Accidents:</u>		
Serious Injury	1	1
Minor Injury	3	1
Damage Only	24	20
No Damage	2	2
<u>Court Cases:</u>		
Civil	6	8
Criminal	63	44
<u>Buildings:</u>		
Plans Approved	28	22
Houses Started	3	2
Houses Completed	3	8

Did You Know....

That the 2010 Private Sector Enterprise Employment Survey showed that there were 43 Construction businesses in operation at the time.

Of these 43, there were 32 operating on a Full-Time basis and 11 on a Part-Time basis.

111 Full Time persons and 37 Part Time persons were employed within the Construction Industry.

The majority of Construction businesses have been in operation between 1 to 5 years.

Publications produced by the Statistics Office:

- Statistical Yearbook
- St Helena in Figures Fact Card
- 2008 St Helena Population Census Report

The above can be purchased from the Statistics Office at the above address.



Comments & suggestions on our Statistical Publications would be appreciated. Remember we are only a phone call away.

Or email:

Statistics Officer: dknipe@sainthelena.gov.sh

Snr Statistics Asst:

stats.assist@sainthelena.gov.sh