

# Statistical News Bulletin

Volume 1  
Issue 3  
September 2011

## Statistics

The practice or science of collecting and analysing numerical data.

## RETAIL PRICE INDEX

The Retail Price Index (RPI) is designed to measure the price changes in a fixed basket of goods and services commonly purchased by households. The RPI is the most familiar general purpose domestic measure of inflation as it represents the cost of the 'Shopping Basket' of goods and services of a typical; or average St Helenian Household.

Inflation at the end of quarter 3 of 2011 stands at 9.7%, showing that annual inflation on the retail price index rose 0.6 percentage points over the quarter.

The main components in which price rises occurred were 'Alcohol & Tobacco', 'Clothing' & 'Household Goods.'

### External Inflation:

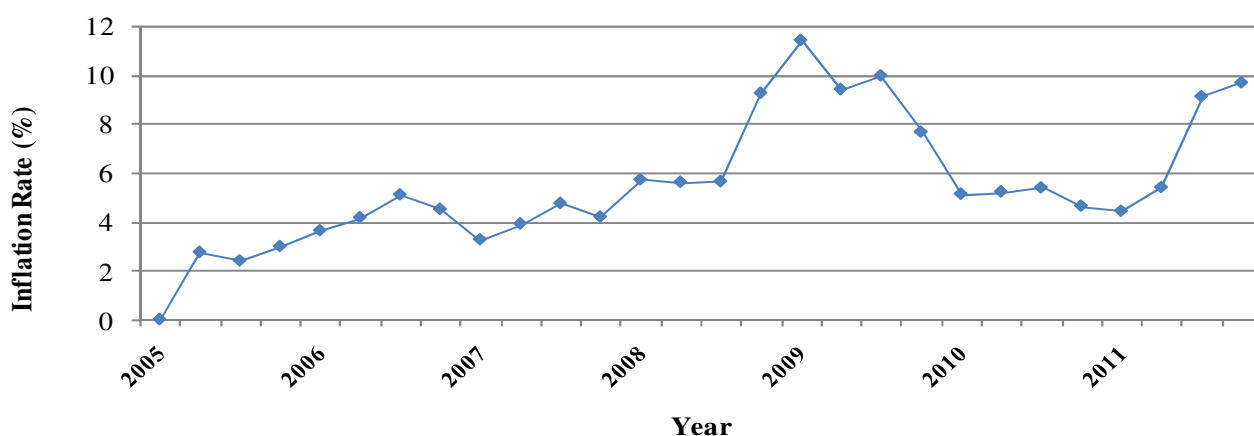
UK inflation (RPI) for July 2011 - 5.3%

SA inflation (CPI) for July 2011 - 5.0%

The Rand at the end of June 2011 was 12.7 to the pound

Because of the island's high import dependency, inflation is influenced by the rate of inflation in the United Kingdom and South Africa.

St Helena Inflation 2005 - 2011



## Private Sector Employment Survey — Non Commercial Sector

A Private Sector Employment Survey (Non Commercial Sector) has been conducted. This is undertaken with the objective of collecting key information relating to the extent, characteristics and perceived constraints to further development of the private sector on St Helena. The population for the survey consisted of all known full time or part time employers within the local non-commercial private sector. Data has now been collated and is currently being analysed. A report will follow shortly. The results of this survey, together with those of the Private Sector Enterprise Employment Survey already analysed will provide a comprehensive overview of all non-government employment on St Helena.

# Statistical News Bulletin

## Rainfall

In Qtr 1 2011 the highest amount of rainfall was recorded at Bates Branch, Harpers & Hutt's Gate areas, with 714.7mm, 557.6mm & 543.4mm respectively, as compared with Qtr 1 2010 where the highest amount of rainfall also fell in the Bates Branch area (402.9mm), followed by Hutt's Gate (355.2mm) & Legg's Gut (326.1mm). It has been noted that over the past 5 years Bates Branch has had the highest amount of rainfall except in Qtrs 1 & 4 2006 when the most rain fell in Hutt's Gate & Qtr 3 2010, when the most rain was recorded in the Scotland area.

## Health

In Qtr 2 2011 there were 153 hospital admissions and 2,394 outpatient attendances. This shows a decrease from Qtr 1 2010, where it was recorded that there were 180 hospital admissions and 2,773 outpatient attendances.

## Building

In Qtr 2 2011 3 houses were started, 5 completed and 8 plans were approved, as compared with the same quarter in 2010 when there were 4 houses started, 2 completed and 15 plans were approved.

## Court

During the 2nd Qtr of 2011 there were 7 Civil cases and 29 criminal cases dealt with in the St Helena Magistrates Court, there was a decrease in the number of civil & criminal cases from qtr 1 2010, when there were 13 civil and 31 criminal cases recorded.

## Traffic Accidents

A total of 27 traffic accidents were reported during qtr 2 2011, showing a 12.5% increase from qtr 2 2010. The majority of these accidents were damage only, however, the number of damage only accidents has decreased by 9.5% since the same period of the previous year.

Publications produced by the Statistics Office:

- Statistical Yearbook
- St Helena in Figures
- 2008 St Helena Population Census Report

The above can be purchased from the Statistics Office at the above address.



Comments & suggestions on our Statistical Publications would be appreciated. Remember we are only a phone call away.

Or email:

Statistics Officer: [dknipe@sainthelena.gov.sh](mailto:dknipe@sainthelena.gov.sh)  
Snr Statistics Asst: [susane@sainthelena.gov.sh](mailto:susane@sainthelena.gov.sh)