

Statistical News Bulletin

Volume 1
Issue 2
June 2011

Statistics

The practise or science of collecting and analysing numerical data.

RETAIL PRICE INDEX

The Retail Price Index (RPI) is designed to measure the price changes in a fixed basket of goods and services commonly purchased by households. The RPI is the most familiar general purpose domestic measure of inflation as it represents the cost of the 'Shopping Basket' of goods and services of a typical; or average St Helenian Household.

The inflation at the end of quarter 2 of 2011 stands at 9.1%, showing an increase of 3.7% since the previous quarter.

The main factor that had an impact on the rise in inflation was the 'Transport' component where there was an increase in the petrol and diesel prices. These two items carry a significant weight within the index.

External Inflation:

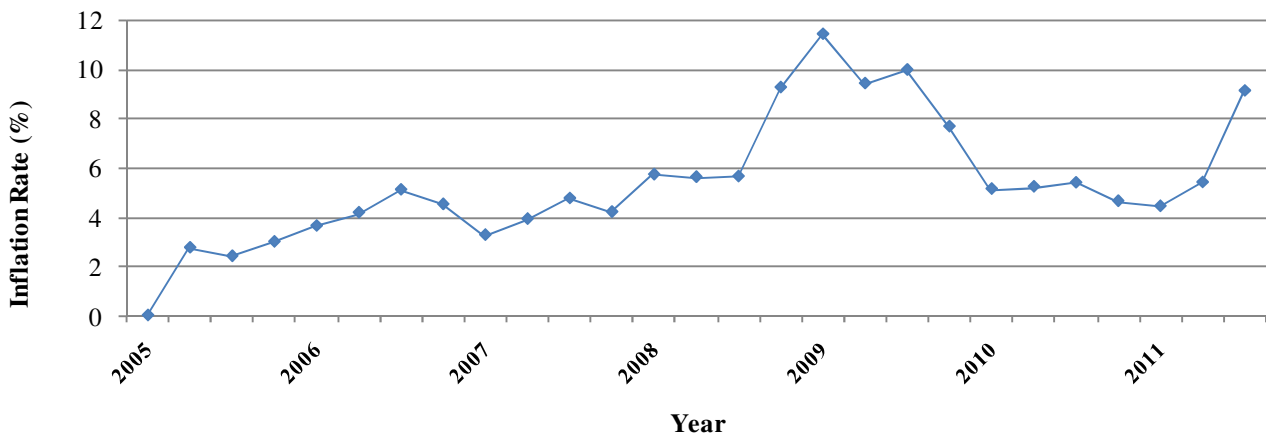
UK inflation (RPI) for May 2011 - 5.2%

SA inflation (CPI) for May 2011 - 4.6%

The Rand at the end of June 2011 was 11.7

Because of the island's high import dependency, inflation is influenced by the rate of inflation in the United Kingdom and South Africa.

St Helena Inflation 2005 - 2011



Price Increases

The collection in Qtr 2 of 2011 showed quite a few increases. This may be partially attributable to changes in Customs duties and other charges. A few basic commodities from the average household are shown on page 2, also shown are the price comparisons of the selected items from the previous year. Further price increases are expected over the next quarter as existing stocks are replenished.

Statistical News Bulletin

Item	Weight	Price Increases Year on Year		
		Qtr 2 2010	Qtr 2 2011	% increase
		£	£	
Cheddar Cheese	1 Kilo	6.49	6.85	6
Onion	1 Kilo	0.89	1.10	24
Toilet Rolls	Pk of 4	1.71	2.15	26
Sandwich Ham	1 Kilo	7.87	9.10	16
Red Tea Bags	80's	1.71	2.00	17
Black Tea Bags	80's	1.52	1.86	22
Baby Soap	Pk of 4	2.45	3.19	30
Car Battery	1 only	52.00	61.45	18
Gas Cylinder	14 Kg	54.50	61.62	13
Paraffin Oil	1 Litre	3.39	4.15	22
Petrol	1 Litre	1.30	1.51	16
Diesel	1 Litre	0.80	1.19	49
Water	Standard Chg + 63.5 cubic metres	46.83	61.85	32
Firewood	2 bundles(Avg Under/Over 60)	1.46	2.30	58
Hospitalisation	Per night	4.45	10.00	125
Prescription	Per item	1.50	1.75	17

Did you know?

From January to March 2011:

10 babies were born



There were 29 criminal convictions



There were 8 deaths



There were 4 Marriages



The highest rainfall on island was recorded at Bates Branch with 714.7mm.



There were 155 hospital admissions



There were 35 Road Traffic Accidents



4 houses were started



A total of 2492 attendances at outpatient clinics



Publications produced by the Statistics Office:

- Statistical Yearbook
- St Helena in Figures
- 2008 St Helena Population Census Report

The above can be purchased from the Statistics Office at the above address.



Comments & suggestions on our Statistical Publications would be appreciated. Remember we are only a phone call away.

Or email:

Statistics Officer: dknipe@sainthelena.gov.sh
Snr Statistics Asst: susane@sainthelena.gov.sh