



EMD

Environmental Management Directorate

"Our Island. Our Environment. Our Responsibility."

February 2013

Monthly Newsletter From The Environmental Management Directorate

FROM THE DIRECTOR

It has been an exciting month, the highlight of which has to be the whale sharks in the bay. That really created a buzz in the office and around the island. Legislation is another really significant area that we have focussed on this month, and we look forward to everyone's input into the various sessions we will run on the draft environment law. We are also very excited to have Shayla Ellick join the team, back from University in UK and work experience at Kew Gardens— she will be a great asset to EMD. Almost everyone within EMD is training, and this month we have another list of staff successfully completing a range of training courses. We are of course very proud of these achievements.

We look forward to continuing to work together with stakeholders and the public to effectively manage St. Helena's environment.

Have a great month!!

Tara.

STAFF ACHIEVEMENTS

The following courses were undertaken by EMD staff

Emergency First Aid Response:

- Judith Brown
- Nikki Chapman
- Shayla Ellick

Assertiveness for Managers:

- Shayla Ellick

Fundamentals of Minute taking:

- Cherilee Thomas

SPECIES CONSERVATION & ENVIRONMENTAL RESEARCH OFFICER – AN INSIGHT INTO SHAYLA'S FIRST MONTH

Shayla Ellick joined the Directorate last month as the Species Conservation & Environmental Research Officer; here she gives us an insight into her first month:

'During my time at EMD so far I have been undergoing an extensive training period. This has included getting a feel for all the areas of work the Directorate undertakes, including shadowing members of the other Divisions. I've also undertaken a few courses at AVEC: 'Emergency First Response' and 'Assertiveness for Managers- Intermediate'.

My training has also involved becoming more knowledgeable about and gaining experience with the island's endemics. I've done a few days with the St Helena National Trust, seeing the work they do in their Endemic Nursery at the Millennium Forest and helping out with their restoration work at High Peak, planting endemics and weeding around endemics already planted. I've also completed two weeks of training at the Endemic Nursery at Scotland, this included:

- Endemic plant identification, from seed to fully grown.
- Sowing seed; pricking and potting out of seedlings; hardening out of young plants; taking and transplanting cuttings.
- Seed collecting, and through this getting out and exploring St Helena and updating my knowledge of where endemics are found on the island.
- Gaining general knowledge and invaluable tips from the guys who work with these plants on a daily basis.

In the near future I will be doing some training with the Habitats Team who work at the Peaks, getting a feel for the work they do and continuing to build up my knowledge of endemic species. I will also be gaining experience in identification, collection and monitoring of invertebrates and building up my knowledge of invertebrate conservation.'



UPDATE ON ENVIRONMENTAL LEGISLATION

There are elements of environmental protection clauses spread across over 20 Ordinances but no single piece of guiding legislation to cover protection of arguably the Island's most precious resource - the environment.

A set of outline clauses (on pollution, litter, waste and protected species) has been created from research, existing legislation elsewhere and from known gaps in current Ordinances. These clauses were proposed following internal discussions and a technical workshop.

We are currently in the process of recruiting a Legal Draughtsperson who will write the Ordinance, remotely from the UK.

EMD are developing a series of workshops for specific sectors and for the public in general, to discuss the draft legislation in detail before the Draftsperson starts work. Workshops will likely begin the week commencing 25th March.

A draft Ordinance will then be written and sent for comment across SHG and to wider stakeholders. These comments will then be incorporated and a final draft presented to SHG. EMD will then begin the process for the formal legal public consultation of the Ordinance and approval through LegCo.

Glen Westmore
Environmental Risk Management Advisor

ENVIRONMENTAL PROTECTION TRAINING

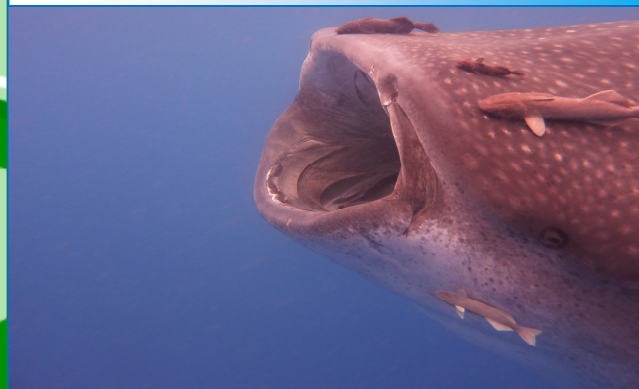
The following training will be held at AVES by Glen Westmore, Environmental Risk Management Advisor of EMD, interested persons can contact AVES, tele. 2613:

Training title	Date
Environmental Protection: Introduction to Water	2 nd April
Environmental Protection: Introduction to Energy and Building Efficiency	9 th April
Environmental Protection: Introduction to Waste	16 th April
Environmental Protection: Introduction to Air, Noise and other Nuisances	23 rd April
Environmental Protection and Pollution Control on Construction Sites	30 th April

WHALE SHARKS

There have been several sightings of Whale sharks around St Helena. Here are a few interesting fact about them:

- The Whale Shark is the worlds largest fish.
- It can grow to a length of 12-15m.
- They are filter feeders, feeding on plankton – tiny microscopic plants and animals.
- They are very solitary creatures spending most of their life alone.
- They are most likely to be seen around St Helena from January to March/April.



A NEW ENDEMIC SPECIES OF MOTH

A new endemic species of moth unique to St Helena has been described and was published at the end of last year. This particular moth named *Agdistis marionae* is a plume moth in the Pterophoridae family. Plume moths are easily recognised by their T shaped resting posture and their lobed or divided wings. *Agdistis marionae* is only 12mm in length so can easily be confused with a mosquito. It is thought to have a very restricted distribution on St Helena and has only been found on or around the endemic St Helena tea *Frankenia portulacifolia*.

Annalea Beard
Marine Assistant

